



Panacea®

# BATTERY BACKUP

for Panacea 3000, 3250 and 3500 beds

## Owner's Manual

*Please keep and refer to this Owner's Manual.*

Thank you for purchasing a Panacea® Battery Backup from Direct Supply Equipment & Furnishings®. Please read this entire guide carefully and keep it for future reference. This guide will provide you with instructions, warnings, warranty information and other important information about your battery backup. Share this information with your housekeeping, nursing and maintenance staff to help ensure the battery backup is cared for properly.

# Table of Contents

Special Notes.....	3
Notice .....	3
Warnings .....	4
Parts List.....	5
Operation.....	6
Maintenance.....	6
Control Box Socket Identification.....	7
Installation .....	8 - 9
Limited Warranty .....	10
Customer Service.....	11

# Special Notes & Notice

## **Special Notes**

WARNINGS/CAUTION NOTICES in the manual apply to hazards or unsafe practices which could result in personal injury and/or property damage.

## **Notice**

Check all parts for shipping damage before using. DO NOT USE IF DAMAGED. ONLY USE AUTHENTIC DIRECT SUPPLY REPLACEMENT PARTS. Contact customer service at 1-800-634-7328 and the freight carrier for further instruction.

This product has been engineered to provide reliable operation.

This product has been thoroughly tested and inspected prior to shipment.

# Warnings

**⚠ WARNING:** DO NOT OPERATE THIS EQUIPMENT WITHOUT FIRST READING AND UNDERSTANDING THIS MANUAL. IF YOU ARE UNABLE TO UNDERSTAND THE WARNINGS, CAUTIONS OR INSTRUCTIONS, CONTACT A HEALTHCARE PROFESSIONAL OR A QUALIFIED TECHNICIAN BEFORE USING THIS EQUIPMENT, OTHERWISE INJURY OR DAMAGE MAY RESULT.

**⚠ WARNING:** The battery backup should be installed by service personnel only.

**⚠ WARNING:** Do not use near explosive gases.

**⚠ WARNING:** Possible fire hazard when used with oxygen administering equipment other than nasal or masked type.

**⚠ WARNING:** When using liquids in or around the bed, caution should be taken to ensure liquids of any kind are not spilled. If a liquid is spilled in or around the bed, UNPLUG the bed immediately. Clean up spill and allow bed and area around bed to dry thoroughly before using the electric controls again.

**⚠ WARNING:** Close supervision by a caregiver is necessary when this product is used near CHILDREN OR PEOPLE WITH DISABILITIES.

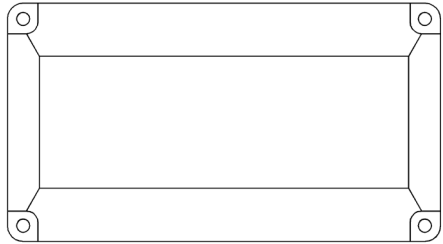
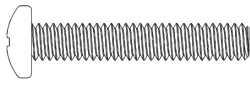
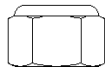
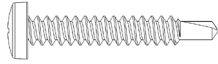
**⚠ WARNING:** NEVER PERMIT ANYONE UNDER THE BED AT ANY TIME.

**⚠ WARNING:** After installation and before use, make sure all attaching hardware is securely tightened.

**⚠ WARNING:** Unplug the power cord when performing any maintenance on the bed.

# Parts List

## Parts List

Part No.	Description	Qty.	Picture (Not to Scale)
4040108	BATTERY BACKUP <u>Environmental Limitations</u> Temperature Range 32° - 104° F (0° - 40°C) Relative Humidity 10% to 93% Atmospheric Pressure 860KPa - 1006KPa	1	
4000197	SCREW – ¼-20 x 1½"	4	
4040331	NUT – Nylock ¼	4	
4000321	SCREW – 10-16 x 1¼ (Discard)	4	
4030030	CABLE TIE – Nylon - 11"	2	

# Operation & Maintenance

## Operation

Once bed is plugged in, battery backup will blink green while charging. When battery backup is fully charged, the green light will stay on (without blinking). The battery backup will work automatically when AC power is lost.

## Maintenance

### Routine Inspection

1. Review and inspect for compliance the “**WARNINGS**” listed in this manual.
2. Check all cords for cuts or other damage.
3. Make sure all plugs are fully seated.
4. Make sure all cords are free of moving parts.

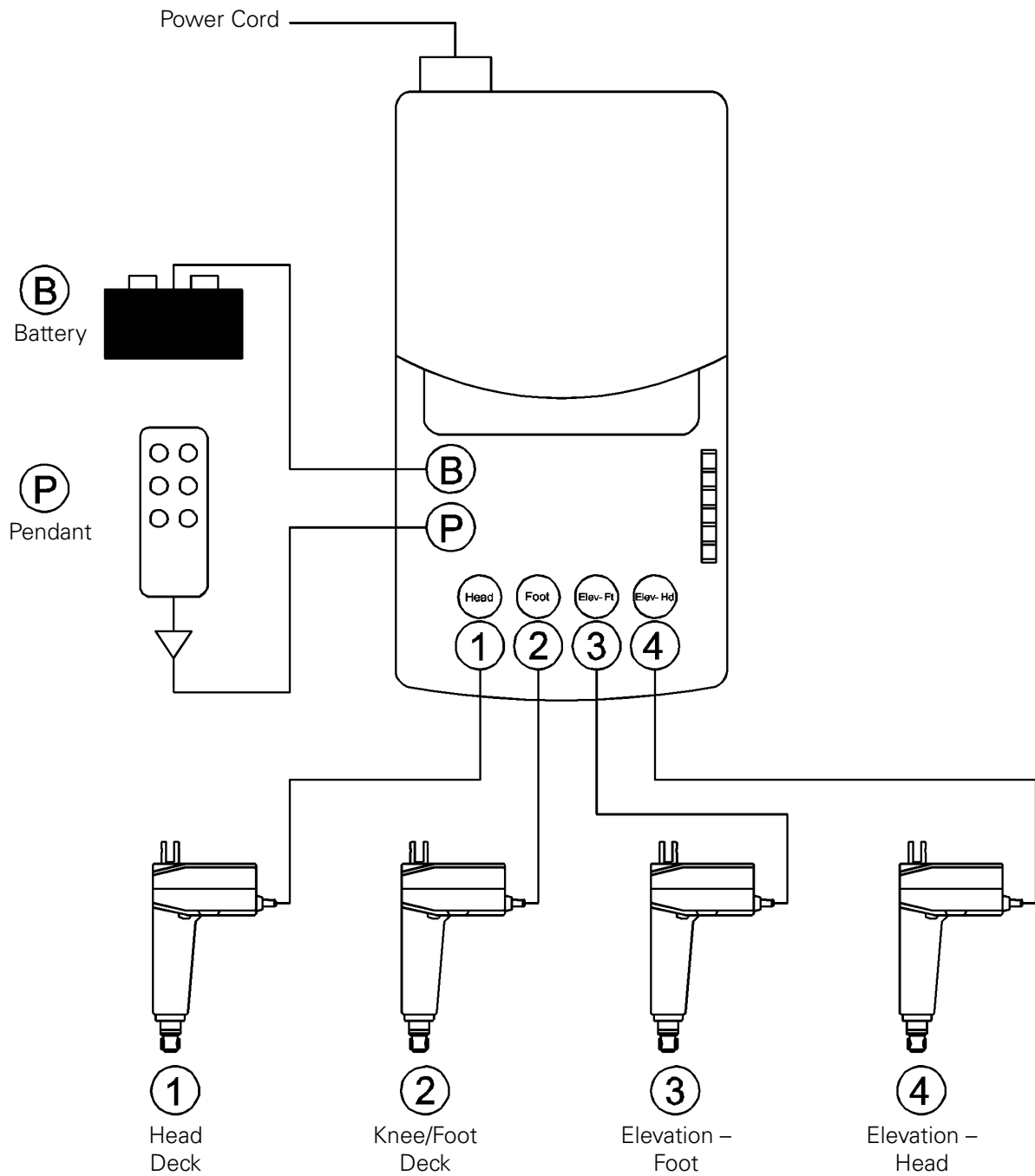
### Cleaning

Clean with a mild solution of antiseptic cleaner and warm water. Read and follow all label instructions on the cleaning products. **DO NOT STEAM OR PRESSURE WASH.**

### Replacement

The Battery Backup should be replaced every three years.

# Control Box Socket Identification



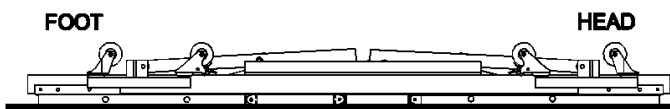
# Installation

## Required Tools

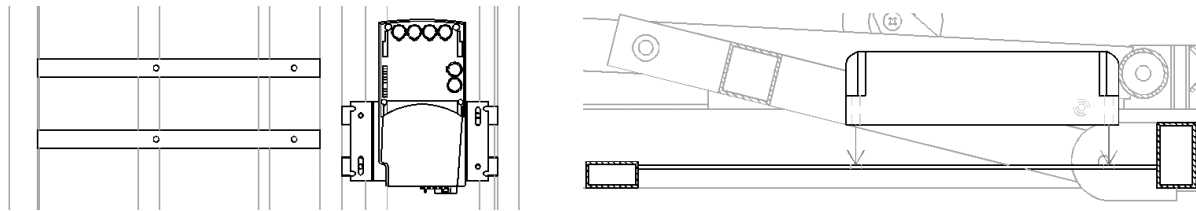
- (1) – #2 Philips Head
- (1) – Power Drill
- (1) –  $\frac{7}{16}$  Wrench

## Installing Battery Backup

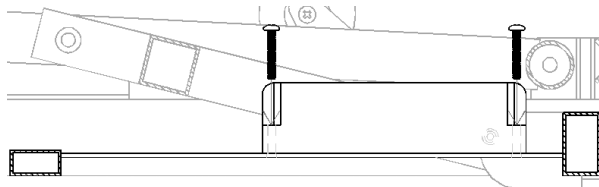
1. Unplug power cord. Using caution, rotate bed to side or upside down position. Position yourself so the head of the bed is to your right.



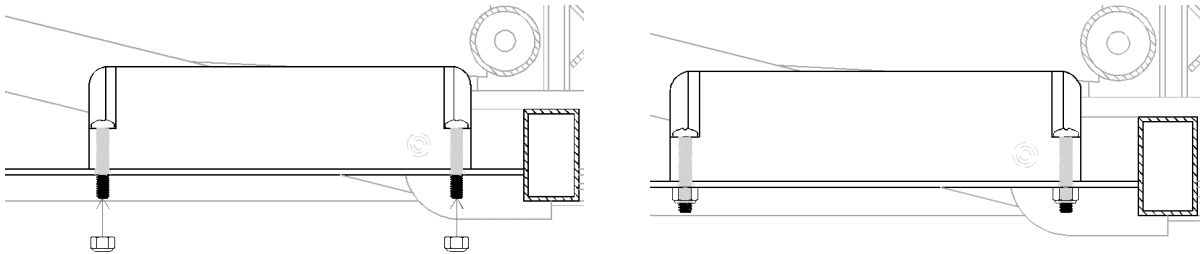
2. Place the battery backup on the cross bars, to the left of the control box, so the four battery backup holes are lined up with the cross bar holes.



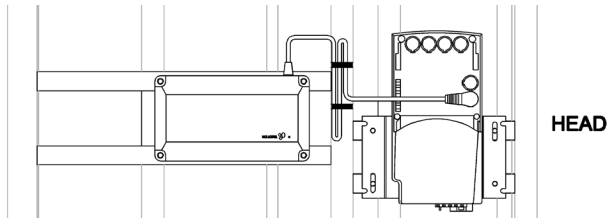
3. Place the four cap screws (4000197) into the holes of the battery backup and cross bars.



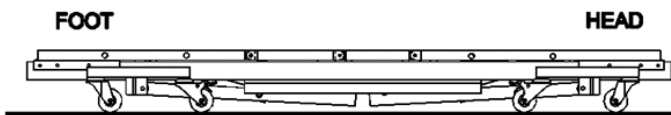
4. Using the power drill and wrench, secure screws with nuts (4040331).



5. When the battery backup is secured to the frame, plug the battery backup into the control box (see control box socket identification diagram). Using cable ties (4030030), tie excess battery backup cord to the bed frame.



6. With help, return the bed to the upright position.



# Limited Warranty

We offer to you, as the original purchaser, a warranty for the Panacea Battery Backup. Our warranty applies for the limited warranty period stated below. If any device or device part listed below is defective in material or workmanship during the applicable limited warranty period, we will repair or replace it at our cost. Please note that the decision to repair or replace a device or device part will be at our discretion. Our warranty applies only if the device is properly maintained by the original purchaser for normal, indoor use and does not cover normal wear and tear, modification of the device or damage caused by abuse, improper use, failure to maintain, use which exceeds the published device limitations or the combination of any device with another product. In addition, our warranty does not cover fading, colorfastness, stains, spills or exposure to chemicals, odors, heat or light. In certain cases, we may provide you repair or adjustment instructions and/or replacement parts, and ask you to perform a repair or adjustment or replace a defective part.

Our warranty gives you specific legal rights, and you may also have other rights, which vary from state to state. Please note that our limited warranty period begins when we ship the device to you. The limited warranty period and our obligations under the warranty end once you transfer the device to someone else or at the end of the applicable limited warranty period identified below, whichever is earlier.

	<b>Warranty Period (Parts Only)</b>	<b>Anticipated Usable Device Life</b>
Panacea® Battery Backup	1 year	3 years

Anticipated Usable Device Life is based on normal use with proper maintenance, cleaning and storage. You should still inspect, monitor and care for the device as described in this guide, as the device may need to be replaced sooner than anticipated in particular situations.

DIRECT SUPPLY MANUFACTURING, INC. MAKES NO IMPLIED WARRANTIES OF MERCHANTABILITY OR FITNESS FOR A PARTICULAR PURPOSE; THESE AND ALL OTHER IMPLIED WARRANTIES ARE SPECIFICALLY DISCLAIMED. TO THE FULLEST EXTENT ALLOWED BY LAW, DIRECT SUPPLY MANUFACTURING, INC. WILL NOT BE LIABLE FOR ANY INCIDENTAL, SPECIAL, CONSEQUENTIAL OR PUNITIVE DAMAGES, OR LOST PROFITS THAT MAY RESULT FROM THE DEVICE OR YOUR USE OF OR INABILITY TO USE THE DEVICE EVEN IF ADVISED OF THE POSSIBILITY OF SUCH DAMAGES. OUR TOTAL LIABILITY TO YOU, IF ANY, IS LIMITED TO THE PRICE OF THE DEVICE OR SERVICE GIVING RISE TO YOUR CLAIM. Some states do not allow an exclusion or limitation of incidental or consequential damages, or how long an implied warranty lasts, so the above limitations or exclusions may not apply to you. If implied warranties are not excluded, and to the extent allowed by law, we limit any and all implied warranties to the applicable warranty period identified above. Except for rights under any applicable state law, the remedies provided under this warranty are your sole and exclusive remedy for any breach of our warranty and state the entire limit of our responsibilities.

# Customer Service

Our promise to you is that you will have a convenient and easy ordering experience, receive a quality Panacea Battery Backup and enjoy outrageous customer service. If you have any questions about the bed you have purchased or would like to request warranty service, please contact: **Direct Supply Equipment & Furnishings** at 1-800-634-7328, 6767 N. Industrial Road, Milwaukee, WI 53223, SalesSupport@DirectSupply.com.



*DirectSupply.com*

---

*APTURA / EQUIPMENT & FURNISHINGS / DSSI / TELS*

---

Distributed by Direct Supply Manufacturing, Inc. 6635 N Industrial Road, Milwaukee, WI 53223.

© 2017 Direct Supply Manufacturing, Inc. All Rights Reserved. Direct Supply®, Panacea®, and all associated logos are the registered trademarks of Direct Supply, Inc., used under license.