

ANTIMICROBIAL

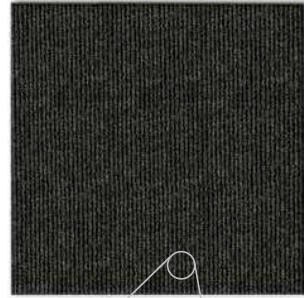
SANIGUARD TILE™ AM

18" x 18" heavy-duty carpet tiles with peel-n-stick backing

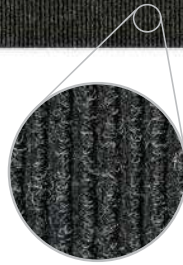
- 28 oz. commercial grade carpet for busy **INDOOR** or **OUTDOOR** entrances and hallways
- Antimicrobial - stops germs and bacteria from entering the building
- Coarse HD fibers provide aggressive scraping, and water retention
- Tiles can be repositioned to create new shapes and sizes
- Easy to install with the built-in adhesive backing, no additional glue required - works inside and outside
- 18" x 18" tiles come in 10 pack box, 22.5 square feet per box
- Also available in 24" x 24" special order tiles - 15 per box



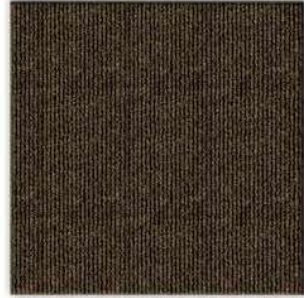
- ANTI-MICROBIAL
- RECYCLED FIBER
- NON-SLIP SURFACE
- ABSORBS MOISTURE
- SUPERIOR SCUFFING
- 28 OZ. FIBER WEIGHT



Charcoal 1701



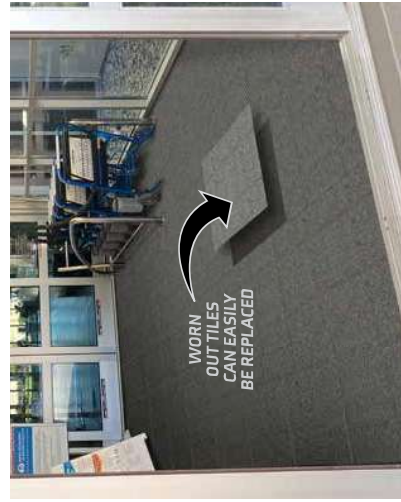
Bold rib pattern for better scraping



Walnut 1403



Gray 1702



Recommended Uses:
Business entryways, stores, supermarkets, factories, office buildings, and other high-traffic areas such as convention centers.

Spec. #1400

Item #39-083-COLOR-01800018

Standard Tile Size:
Nominal 18" X 18" Metric 46 X 46 cm

Special Order Sizes*:
Nominal 24" X 24" Metric 61 X 61 cm

*Minimum quantity required, call for details



BUILD ANY SIZE & SHAPE!

CREATE MULTIPLE LOOKS BY ALTERNATING RIB DIRECTION OR MIXING COLORS

THE SANIGUARD ADVANTAGE

- EPA-APPROVED** - Antimicrobial additive used in floor coverings
- ANTIMICROBIAL FIBER TECHNOLOGY** - Reduces odor and prevents growth of bacteria, mold, and mildew
- ECO-FRIENDLY PET FIBERS** - Made from 18 plastic bottles/sq. yd.



Scan QR code for installation video



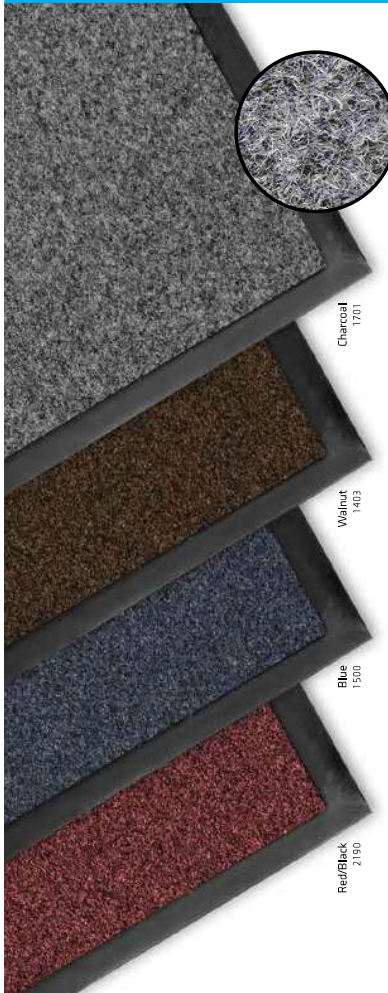
SECURE YOUR BUSINESS AGAINST DIRT, GERMS, AND BACTERIA

The turmoil brought about by the 2020 pandemic is likely to have long-lasting implications for many industries and businesses.

The way we work, communicate, and interact is very different than in the past. Safety and wellness are top priorities and businesses are adapting to this new environment. Using specialized products that minimize risk is the starting point in safeguarding your company.

Our new SANIGUARD collection features unique matting products that promote a healthier work environment.





87%
MORE FIBER WEIGHT
THAN STANDARD TUFF CLEFIB.

ANTIMICROBIAL

SANIGUARD STANDARD TUFF™ AM 150z.

Plush carpet with crisp and clean edge appearance - now packed with antimicrobial protection

- 15 oz. plush D'Ivoire needlepunch carpet
- Solution-dyed UV stabilized PET fiber is highly stain resistant
- Does not peel and shed like traditional tufted plush carpets
- Slip-resistant vinyl backing

THE SANIGUARD ADVANTAGE

- ✓ **EPA-APPROVED** - Antimicrobial additive used in floor coverings
- ✓ **ANTIMICROBIAL FIBER TECHNOLOGY** - Reduces odor and prevents growth of bacteria, mold, and mildew
- ✓ **ECO-FRIENDLY PET FIBERS** - Made from 12 plastic bottles/sq. yd.

SCRAPING	7	HIGH
WATER RETENTION	8	HIGH
WEAR RESISTANCE	8	HIGH



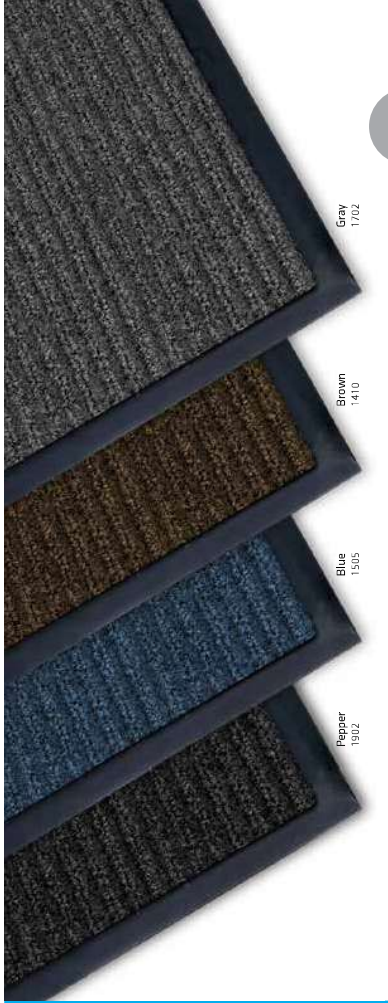
Recommended Uses: Medium to high-traffic indoor entrances and walkways. Spec. #1404 Item #55-546-COLOR-SIZE



Standard Roll Sizes:
Nominal Metric
3' x 60' 91 x 1828 cm
4' x 60' 121 x 1828 cm
6' x 60' 182 x 1828 cm

Standard Mat Sizes:
Nominal Metric
2' x 3' 60 x 86 cm
3' x 4' 86 x 116 cm
3' x 5' 86 x 147 cm
3' x 6' 86 x 147 cm

Custom Sizes:
3', 4', and 6' widths up to 60' length



50%
MORE FIBER WEIGHT
THAN PROTECIB.

ANTIMICROBIAL

SANIGUARD PROTECTOR™ AM 240z.

Traditional double-rib pattern in a heavyweight construction packaged with high-end features, offers maximum value

- 24 oz. heavyweight carpet offers excellent soil removal and water retention
- Solution-dyed UV stabilized PET fiber is highly stain-resistant
- **New coarse fiber system** for excellent scraping
- Slip-resistant vinyl backing

THE SANIGUARD ADVANTAGE

- ✓ **EPA-APPROVED** - Antimicrobial additive used in floor coverings
- ✓ **ANTIMICROBIAL FIBER TECHNOLOGY** - Reduces odor and prevents growth of bacteria, mold, and mildew
- ✓ **ECO-FRIENDLY PET FIBERS** - Made from 18 plastic bottles/sq. yd.

SCRAPING	8	HIGH
WATER RETENTION	7	HIGH
WEAR RESISTANCE	8	HIGH



Recommended Uses: Medium to high-traffic indoor entrances and walkways. Spec. #1403 Item #55-543-COLOR-SIZE



Standard Roll Sizes:
Nominal Metric
3' x 60' 91 x 1828 cm
4' x 60' 121 x 1828 cm
6' x 60' 182 x 1828 cm

Standard Mat Sizes:
Nominal Metric
2' x 3' 60 x 86 cm
3' x 4' 86 x 116 cm
3' x 5' 86 x 147 cm
3' x 6' 86 x 147 cm

Custom Sizes:
3', 4', and 6' widths up to 60' length