



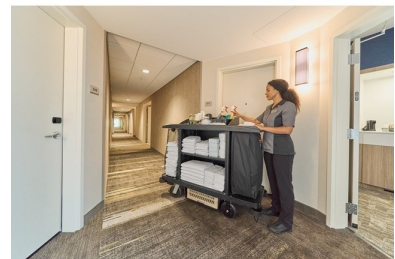
MOTORIZED KIT FOR HOUSEKEEPING CARTS

SKU: 2173556



MOTORIZED KIT FOR HOUSEKEEPING CARTS

This Motorized Kit for Housekeeping Cleaning Carts is the ideal choice for users who want the benefits of cordless motorized power to reduce user strain for heavy housekeeping loads. This retrofit kit, boosted by PROPWR™, allows you to add motorized power to new or existing Housekeeping Carts. Designed with motorized drive wheels to reduce the effort required to move up to 350 lbs to help quickly move heavy loads. A centralized control system features variable speeds from 0-2 mph, with both forward and reverse settings. A removable key prevents unauthorized use of power. The rechargeable battery can be easily removed and changed out to minimize shift disruptions with no downtime between uses. Dual onboard battery compartments provide back-up power without having to plug in the entire cart, minimizing costly workflow disruptions. Compatible with Compact and Full-Size Housekeeping Carts, the kit includes: hand-activated control, 2 motorized drive wheels, 1 battery, 1 charger, and 2 keys.



FEATURES & BENEFITS

- Boosted by PROPWR™ Retrofit Kit: Adds motorized power to new or existing Rubbermaid Commercial Products® Housekeeping Carts.
- Motorized Drive Wheels: Reduce the effort required to move up to 350 lbs. to help quickly move heavy loads.
- Centralized Control System: Features variable speed from 0-2 mph with both forward and reverse settings.
- Removable Key: Prevents unauthorized use of power.



MOTORIZED KIT FOR HOUSEKEEPING CARTS

SKU: 2173556

- Rechargeable PROPWR™ Battery: Can be easily removed and changed out to minimize shift disruptions with no downtime between use.
- Dual Onboard Battery Compartments: Provide back-up power without having to plug in the entire cart, minimizing costly workflow disruptions due to battery switch outs.
- Compatible with Compact and Full-Size Housekeeping Carts: Use with existing cart styles (FG6189/90/91/92, FG9T1900, 1969596), all sold separately.
- Kit Includes: Hand-activated control, 2 motorized drive wheels, 1 battery, 1 charger, and 2 keys. Cart not included, additional batteries (2173664) and chargers (2173520) available for purchase separately.
- Rated IPX4: For water resistance.

SPECIFICATIONS

	U.S.	Metric
Product Length	24.41 in	62.00 cm
Product Width	17.32 in	43.99 cm
Product Height	10.04 in	25.50 cm
Product Weight	33.07 lb	15.00 kg
Case Pack Quantity	1	
Color	Black	
UPC	00086876250121	

CERTIFICATIONS

