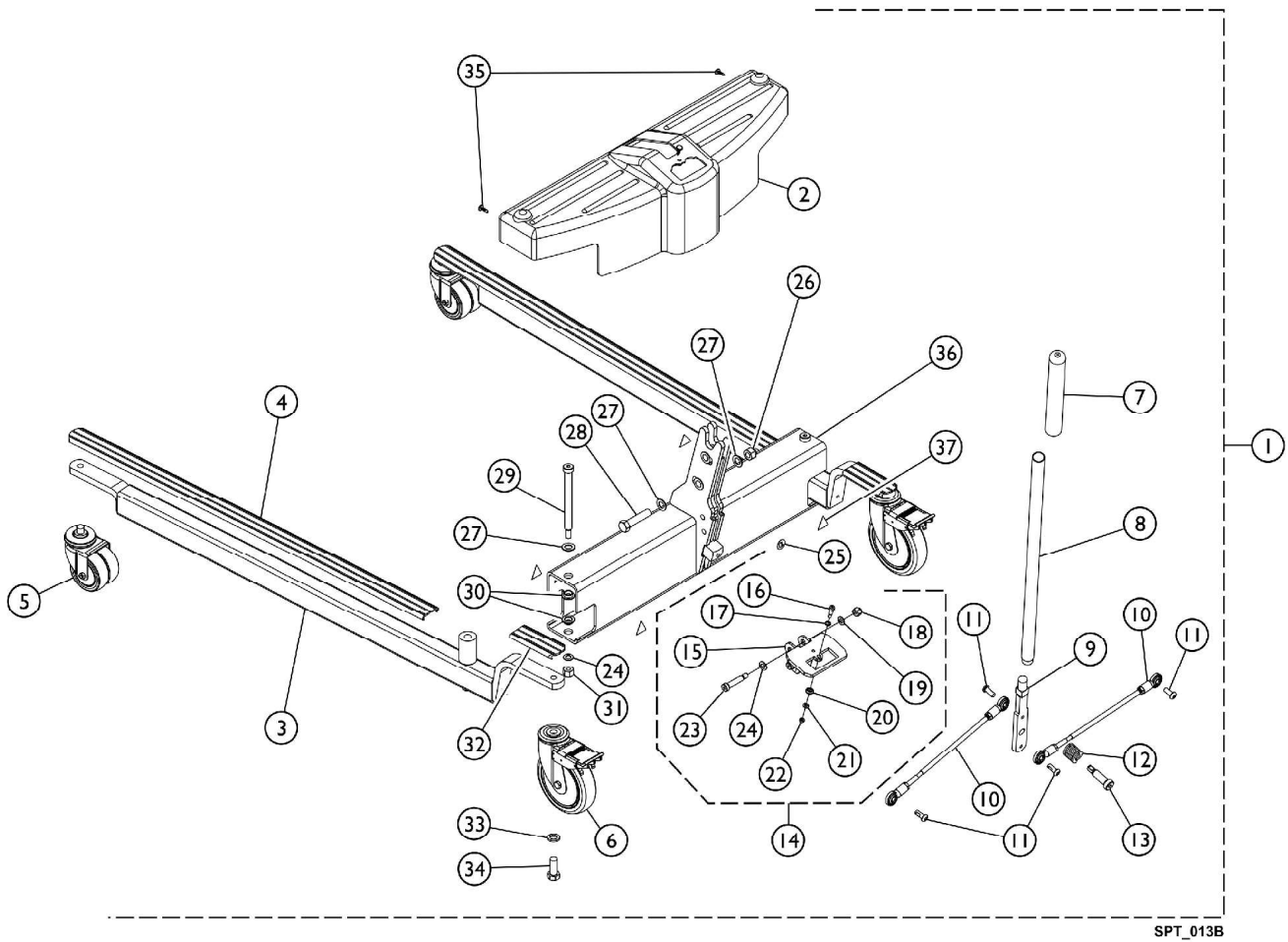


Base Assembly (After 7/1/10)

Model RPL/ RPA 450-1, RHL/ RHA 450-1

NOTE: After 7/1/10, when using Item 36 (1132033) to replace the previous Cross Support (1078300), Items 14 (1169830) and Item 9 (1156176) should be ordered also.



Base Assembly (After 7/1/10)

Model RPL/ RPA 450-1, RHL/ RHA 450-1

NOTE: After 7/1/10, when using Item 36 (1132033) to replace the previous Cross Support (1078300), Items 14 (1169830) and Item 9 (1156176) should be ordered also.

Item Number	Note	Part Number	Description	Quantity Per	
				Package	Assembly
1	A	1079810	Kit, Base - Low, Adjustable	1	1
1	A	1079811-NLA	NLA - Kit, Base - Standard, Adjustable	1	1
2		1156185	Shroud	1	1
3		1095672	Leg, Adjustable, Low Base, Grey	1	2
	B,F	1095674	Kit, Legs Adjustable, Low Base, Pair with Covers	1	1
			Leg, Adjustable, Low Base, Grey	1	2
			Cover, Front Leg (Long)	1	2
			Cover, Rear Leg (Short) - Low Base/ Standard Base	1	2
4	M	1070114	Cover, Front Leg (Long)	1	2
5	E,I	1123560	Caster, Swivel Dual (3")	1	2
5	H	1070957-NLA	NLA - Caster, Swivel, Front - Adjustable Base (5")	1	2
5	C,G	1123545	Caster Assembly, Swivel (5")	1	2
		1110422	Kit, Caster Assembly, Swivel (5") (Pair)	1	1
			Caster Assembly, Swivel (5")	2	1
6	D	1123539	Caster Assembly, Swivel w/ Brake (5")	1	2
	F,L	1110421	Kit, Caster Assembly, Swivel w/ Brake (5") (Pair)	1	1
			Caster Assembly, Swivel w/ Brake (5")	1	2
			Bushing (15/32 x 1-1/16 x 9/32")	1	2
			Instruction Sheet	1	1
7		1032246	Grip, Cane	1	1
8		1078287	Handle, Grey	1	1
9	K	1156176	Handle, Mounting	1	1
10		1065152	Tie Rod Assembly	1	2
11		1155720	Screw, Socket, Button Head w/ Patch (5/16-18 x 13/16")	1	4
12		1064122	Spring, Compression (1 x 1-1/16 x 1/8")	1	1
13		1029134	Screw, Shoulder Hex Socket Head w/ Patch (1/2" x 1-1/4", 3/8-16)	1	1
14	J,K	1169830	Kit, Index Plate w/ Hardware	1	1
15			Bracket, Index Plate	1	1
16			Screw, Shoulder Hex Socket Head (3/8 x 1-1/2", 5/16-18)	1	2
17			Screw, Shoulder, Hex Socket (1/4 x 1/2", 10-32)	1	1
18			Washer, Flat (1/4 x 3/8 x 1/16)	1	1
19			Washer, Flat (5/16 x 5/8 x 1/16")	1	2
20			Locknut (5/16-18)	1	2
21			Roller, Index Plate	1	1
22			Washer, Flat (7/32 x 13/32 x 1/16)	1	1
23			Locknut (#10-32)	1	1
24			Washer, Flat (3/8 x 11/16 x 1/16")	1	2
24		1065214	Washer, Flat (3/8 x 11/16 x 1/16")	1	2

Base Assembly (After 7/1/10)

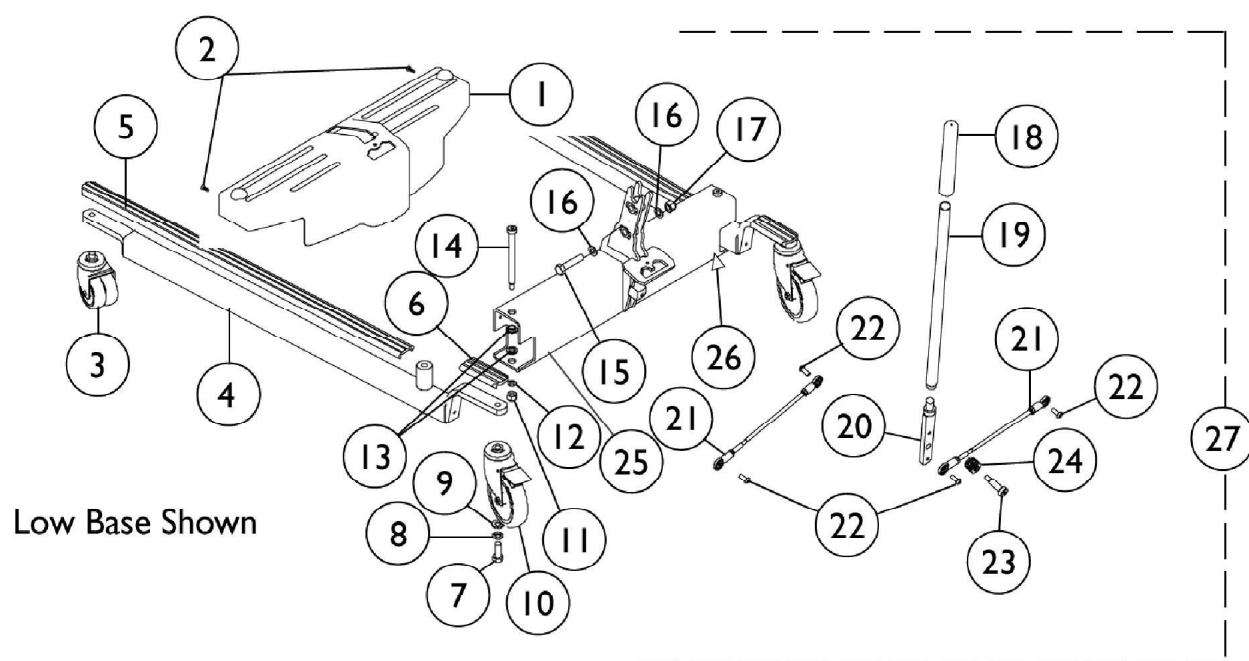
Model RPL/ RPA 450-1, RHL/ RHA 450-1

NOTE: After 7/1/10, when using Item 36 (1132033) to replace the previous Cross Support (1078300), Items 14 (1169830) and Item 9 (1156176) should be ordered also.

Item Number	Note	Part Number	Description	Quantity Per	
				Package	Assembly
25		1079113	Label, Year of Manufacture	1	1
26		1078981	Locknut (1/2-13)	1	1
27		1026174	Washer (1/2 x 7/8 x 3/64")	1	4
28		1078979	Screw, Hex Head (1/2-13 x 2-1/4")	1	1
29		1062424	Screw, Shoulder Hex Socket Head (1/2" x 5", 3/8-16)	1	2
30		1062419	Bushing, Flanged	1	4
31		1065216	Locknut (3/8-16)	1	2
32	N	1079137	Cover, Rear Leg (Short) - Low Base/ Standard Base	1	2
33		1014371	Lockwasher (1/2")	1	2
34		1073884	Screw, Hex Head (1/2-13 x 1-1/4")	1	2
35		1023632	Clip, Shroud	1	2
36	K	1132033	Cross Support	1	1
37		1079112	Label, Attention	1	4

NOTE: A - Includes items 2 thru 37, Shippers Carton and Owner's Manual.
 B - Includes Adjustable Leg, Front and Rear Leg Covers. As of 11/09/21 part #1095674 is no longer used for RPL450-1 model.
 C - Also available as a pair, see 1110422.
 D - Also available as a pair, see 1110421.
 E - Caster stem is threaded, no additional hardware is necessary.
 F - Not shown in illustration.
 G - 5" Wheels used on RHA/RPA lifts only.
 H - No longer available, see 1123545 to order replacement.
 I - 3" Wheels used on RHL/RPL lifts only.
 J - Includes items 15-24.
 K - After 7/1/10, when using Item 36 (1132033) to replace the previous Cross Support (1078300), Items 14 (1169830) and Item 9 (1156176) should be ordered also.
 L - Bushings added 7/30/12 and used for 9805/9805P Lifts only to provide clearance for the caster to rotate freely.
 M - As of 11/09/21 item 4 part #1070114 Long Leg Cover was replaced w/ item 32 part #1079137 Short Leg Cover on RPL 450-1 model.
 N - As of 11/09/21 item 32 is assembled to both Front and Rear of RPL 450-1 model.

Base Assembly - RPL/ RPA 450-1 and RHL/ RHA 450-1 (Before 7/2/10)



Base Assembly - RPL/ RPA 450-1 and RHL/ RHA 450-1 (Before 7/2/10)

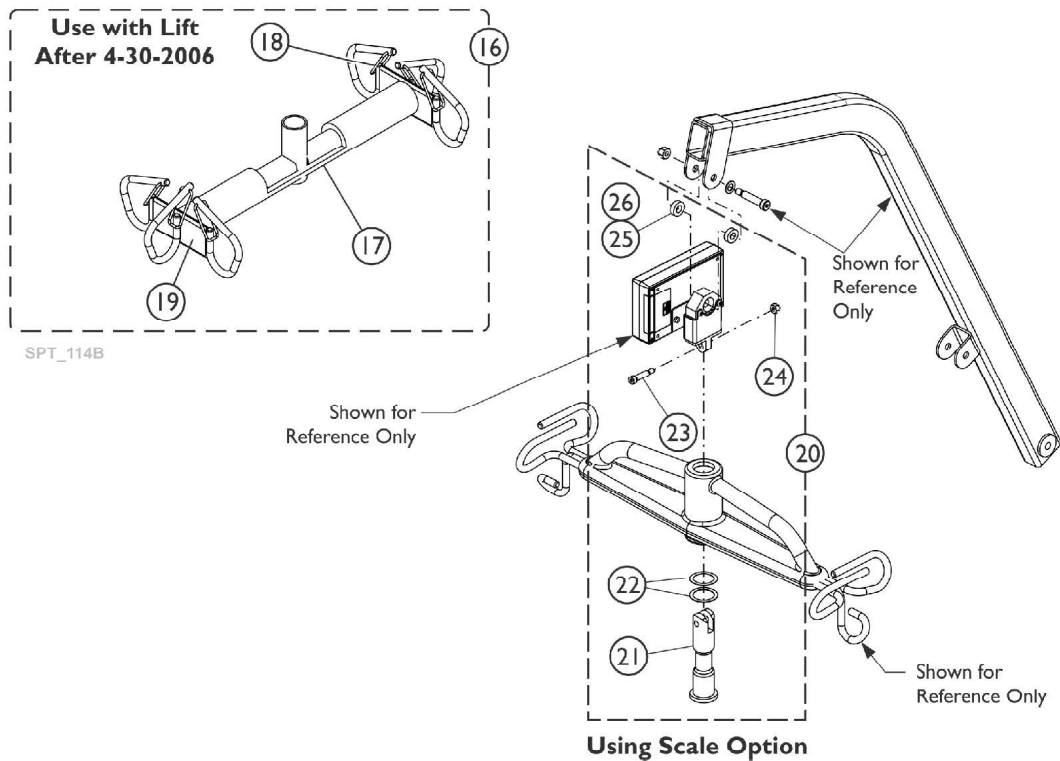
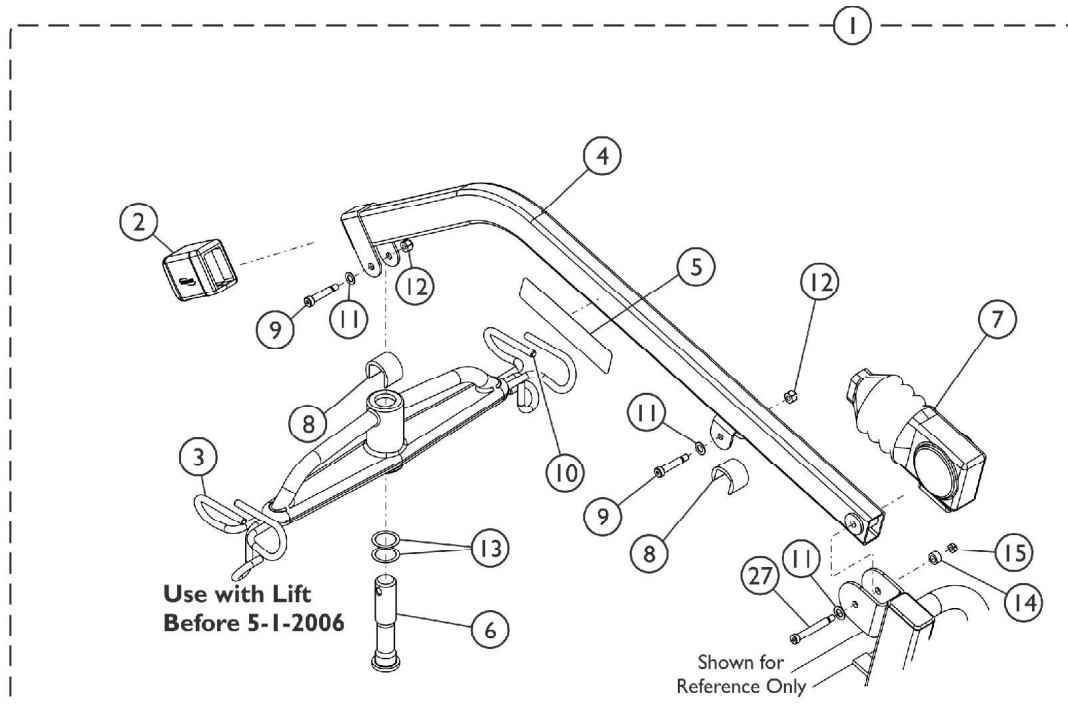
Item Number	Note	Part Number	Description	Quantity Per	
				Package	Assembly
1	M	1078290-NLA	NLA - Shroud	1	1
1		1156185	Shroud	1	1
2		1023632	Clip, Shroud	1	3
3	I	1123560	Caster, Swivel Dual (3")	1	2
3	G	1070957-NLA	NLA - Caster, Swivel, Front - Adjustable Base (5")	1	2
3		1123545	Caster Assembly, Swivel (5")	1	2
	H	1110422	Kit, Caster Assembly, Swivel (5") (Pair)	1	1
3			Caster Assembly, Swivel (5")	2	1
4	B	1078309-NLA	NLA - Leg, Adjustable, Low Base, Grey	1	2
4	L	1095672	Leg, Adjustable, Low Base, Grey	1	2
5		1070114	Cover, Front Leg (Long)	1	2
	A,C,H	1095674	Kit, Legs Adjustable, Low Base, Pair with Covers	1	1
4			Leg, Adjustable, Low Base, Grey	1	2
5			Cover, Front Leg (Long)	1	2
6			Cover, Rear Leg (Short) - Low Base/ Standard Base	1	2
6	D	1073195-NLA	NLA - Cover, Rear Leg - Standard Base	1	2
6	E	1079137	Cover, Rear Leg (Short) - Low Base/ Standard Base	1	2
7		1073884	Screw, Hex Head (1/2-13 x 1-1/4")	1	2
8		1014371	Lockwasher (1/2")	1	2
9		1073885-NLA	NLA - Washer (1/2 x 15/16 x 1/8")	1	2
10		1123539	Caster Assembly, Swivel w/ Brake (5")	1	2
	H,N	1110421	Kit, Caster Assembly, Swivel w/ Brake (5") (Pair)	1	1
			Caster Assembly, Swivel w/ Brake (5")	1	2
			Bushing (15/32 x 1-1/16 x 9/32")	1	2
			Instruction Sheet	1	1
11		1065216	Locknut (3/8-16)	1	2
12		1065214	Washer, Flat (3/8 x 11/16 x 1/16")	1	2
13		1062419	Bushing, Flanged	1	4
14		1062424	Screw, Shoulder Hex Socket Head (1/2" x 5", 3/8-16)	1	2
15		1078979	Screw, Hex Head (1/2-13 x 2-1/4")	1	1
16		1026174	Washer (1/2 x 7/8 x 3/64")	1	1
17		1078981	Locknut (1/2-13)	1	1
18		1032246	Grip, Cane	1	1
19		1078287	Handle, Grey	1	1
20		1078289-NLA	NLA - Handle, Mount	1	1
21		1065152	Tie Rod Assembly	1	2
22		1065215	Screw, Socket Button Head w/ Patch (5/16-18 x 3/4")	1	4
23		1029134	Screw, Shoulder Hex Socket Head w/ Patch (1/2" x 1-1/4", 3/8-16)	1	1
24		1064122	Spring, Compression (1 x 1-1/16 x 1/8")	1	1
25	K	1078300	Cross Support	1	1

Base Assembly - RPL/ RPA 450-1 and RHL/ RHA 450-1 (Before 7/2/10)

Item Number	Note	Part Number	Description	Quantity Per	
				Package	Assembly
26		1079112	Label, Attention	1	1
27		1079810	Kit, Base - Low, Adjustable	1	1
27	J	1079811-NLA	NLA - Kit, Base - Standard, Adjustable	1	1
NOTE: A - After 4/13/00, Base Legs were lowered for improved clearance. B - Before 4/14/00. C - Kit includes Adjustable Leg, Front Leg Cover and Rear Leg Cover. D - Before 6/5/00. E - After 6/4/00. G - Item no longer available, refer to part number 1123545. H - Not shown. I - Caster stem is threaded. Additional hardware is not necessary. J - No longer available. Use 1079810 when replacing parts. K - Part is no longer replaceable in the field as of 7/1/10, use 1132033 as the replacement. When ordering 1132033, you should also order 1169830 and 1156176. L - Both Legs must be replaced on Units built before 7/2/10. Order 1095674 as the replacement. M - Part is no longer available. Order 1156185 as a replacement. N - Bushings added 7/30/12 and used for 9805/9805P Lifts only to provide clearance for the caster to rotate freely.					

Boom Assembly

Model - RPL/ RPA 450-1 and RHL/ RHA 450-1



Boom Assembly

Model - RPL/ RPA 450-1 and RHL/ RHA 450-1

Item Number	Note	Part Number	Description	Quantity Per	
				Package	Assembly
1		1082594	Kit, Mast & Boom - Electric	1	1
1		1082595-NLA	NLA - Kit, Mast & Boom - Hydraulic	1	1
2	N	1078983-NLA	NLA - Tube Cover with Internal End Cap Assembly	1	1
2		1152114	Tube Cover with Internal End Cap Assembly	1	1
3	G	1064518-NLA	NLA - Bracket, Hanger - Urethane Padded	1	1
3		1075644-NLA	NLA - Bracket, Hanger - Extra Wide Swivel Bar Only	1	1
	A,B,C	1065360	Cap, End, Black (1-1/4 x 2")	1	1
4	M	1078297	Boom, RPL/ RPA, Electric	1	1
4	N	1079822	Boom, RHL/ RHA, Hydraulic	1	1
5		1068065	Decal - Reliant 450 Lift	1	1
6	J	1064339	Pin, Hanger	1	1
7		1063234	Boot	1	1
8		1064269	Guard, Finger	1	2
9		1031665	Screw, Shoulder Hex Socket Head (3/8 x 1-1/2", 5/16-18)	1	2
10	C,D,E	1137247-NLA	NLA - Package, Rubber Tip, Beige	6	1
11		1065214	Washer, Flat (3/8 x 11/16 x 1/16")	1	3
12		1064267	Locknut (5/16-18)	1	2
13		1064338	Washer, Nylon (1-9/64 x 1-1/2 x 1/64")	1	2
14		1129466	Spacer (3/8 x 5/8 x 11/32")	1	1
15		1028769	Locknut (5/16-18)	1	1
16	F	1143629	Kit, Hanger Bar w/ Latches - Retrofit	1	1
			Bar, Hanger	1	1
			Bar, Pad	1	1
17	F	1070969	Bar, Pad	1	1
18		1147501	Kit, Latch - Hanger Bar	1	1
			Package, Latch	6	1
19	F	1132035	Bar, Hanger	1	1
20	H	1147502	Kit, Scale Hardware	1	1
21			Pin, Hanger	1	1
22			Washer, Nylon (1-9/64 x 1-1/2 x 1/64")	1	2
23			Screw, Shoulder, Socket (5/16 x 1, 1/4-20 Thread)	1	1
24			Locknut (1/4-20)	1	2
25			Washer, Flat (3/8 x 11/16 x 1/16")	1	2
26			Spacer (3/8 x 5/8 x 11/32")	1	2
27		1129465	Screw, Shoulder Hex Socket Head (3/8 x 2-1/4", 5/16-18)	1	1

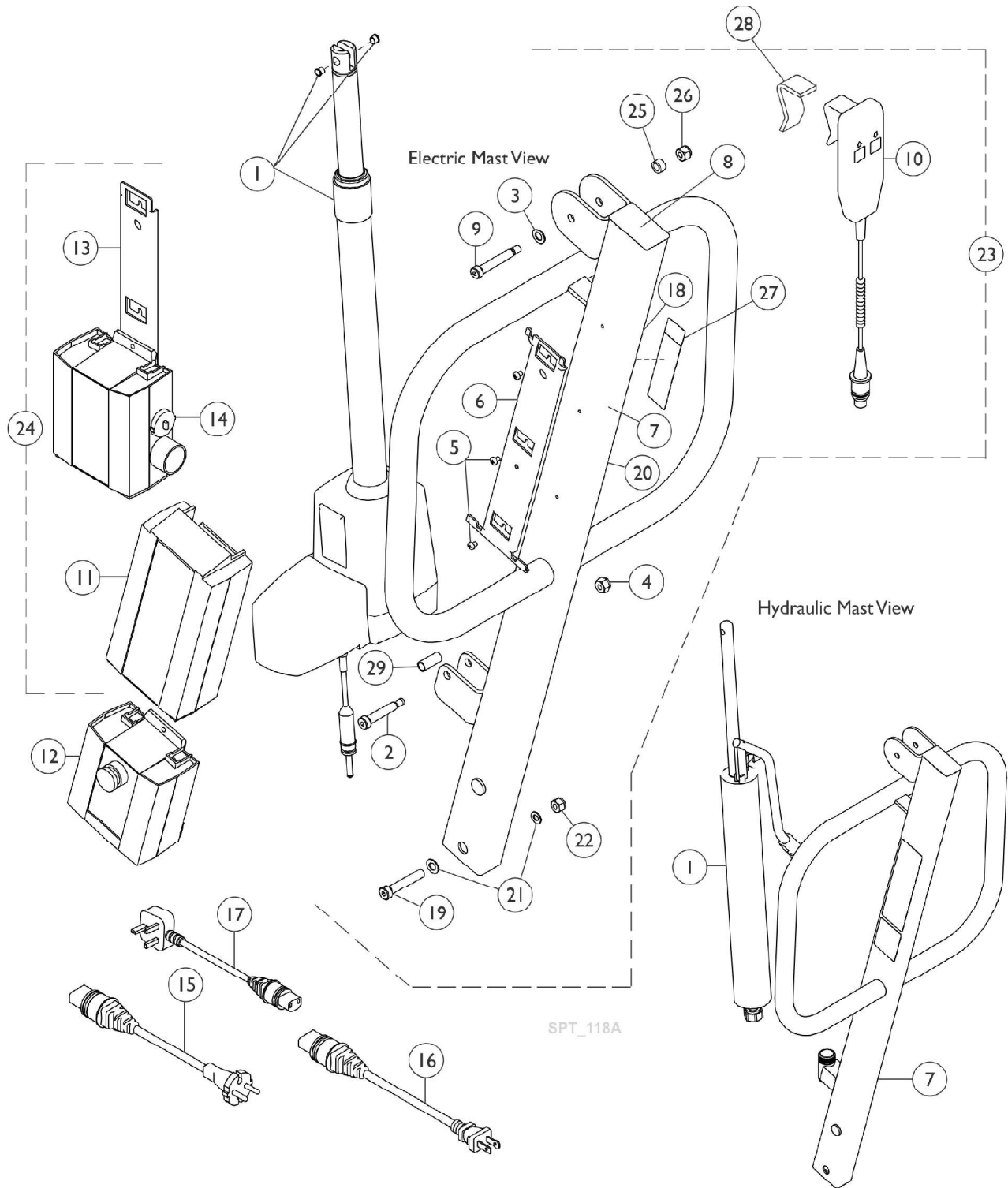
Boom Assembly

Model - RPL/ RPA 450-1 and RHL/ RHA 450-1

NOTE: A - Used on equipment built after 5-13-1999, End Cap is Incorporated into (item 2) Tube Cover with Internal End Cap Assembly.
B - Used on equipment built before 5-14-1999.
C - Not shown on illustration.
D - Includes (6) Rubber Tips and Instruction Sheet.
E - Used on Spreader Bar Hooks.
F - Use on Boom Assembly "After 4-30-2006."
G - Use on Boom Assembly "Before 5-1-2006." NLA, use part number 1143629 as a replacement.
H - Used to mount Hanger Bar to Boom when using a Reliant Scale option. Use Hanger Pin included in this kit to mount Scale and Hanger Bar to Boom.
J - Hanger Pin is used only to attach the hanger bar to the boom. The Hanger Pin to mount the Bar and Scale to the Boom is included in Kit 1147502.
M - Used on equipment built before 11-17-2008.
N - Used on equipment built after 11-16-2008.

Mast Assembly

Model - RPL/ RPA 450-1 and RHL/ RHA 450-1



Mast Assembly

Model - RPL/ RPA 450-1 and RHL/ RHA 450-1

Item Number	Note	Part Number	Description	Quantity Per	
				Package	Assembly
1	K	60126449	Actuator Motor w/ Bushings	1	1
1		9099-NLA	NLA - Pump	1	1
1		9099R-NLA	NLA - Pump, Hydraulic	1	1
1		9099P	Pump, Hydraulic	1	1
2	A	1031665	Screw, Shoulder Hex Socket Head (3/8 x 1-1/2", 5/16-18)	1	3
3	A	1065214	Washer, Flat (3/8 x 11/16 x 1/16")	1	1
4	G	1064267	Locknut (5/16-18)	1	1
5		1078980	Screw, Phillips Pan Head (#10-24 x 1/4")	1	3
6	D	1078284	Bracket, Battery - Electric Only	1	1
7		1078292	Mast, Electric	1	1
7		1078310	Mast, Hydraulic	1	1
8		1065361	Cap, End, Black (1-1/2 x 2-1/2")	1	1
9		1129465	Screw, Shoulder Hex Socket Head (3/8 x 2-1/4", 5/16-18)	1	1
10	H	1177604	Pendant, Two Channel w/ Hook	1	1
11	D	1078276	Battery Pack, Linak	1	1
12	D	1078275	Controller - Electric Only	1	1
13	D	1078306	Bracket, Wall Mount Charger	1	1
14	D,L	1078274	Charger, Electric Only w/o Power Cord	1	1
15	D	1079135-NLA	NLA - Cord, European - Electric Only	1	1
16	D	1079133	Cord, Power, USA	1	1
17	D	1079134-NLA	NLA - Cord, UK - Electric Only	1	1
18		1073698-NLA	Label, Warning, Lift, 450 Pound Capacity	1	1
18		1073703-NLA	NLA - Label, Warning, Reliant 450 Lift - Hydraulic Only	1	1
19		1078979	Screw, Hex Head (1/2-13 x 2-1/4")	1	1
20		1075653	Label, CE Marking	1	1
21		1026174	Washer (1/2 x 7/8 x 3/64")	1	2
22		1078981	Locknut (1/2-13)	1	1
23	B	1082594	Kit, Mast & Boom - Electric	1	1
23	F	1082595-NLA	NLA - Kit, Mast & Boom - Hydraulic	1	1
24	E	1079815	Kit, Charger - USA Only	1	1
11			Battery Pack, Linak	1	1
13			Bracket, Wall Mount Charger	1	1
14			Charger, Electric Only w/o Power Cord	1	1
16			Cord, Power, USA	1	1
25		1129466	Spacer (3/8 x 5/8 x 11/32")	1	1
26	G	1028769	Locknut (5/16-18)	1	1
27	C	1130234-NLA	NLA - Kit, Label Warning - Bolt Mast w/Instruction - 450 Lift (Spanish)	1	1
			Sheet, Label 450 Lift (Spanish)	1	1
			Instruction Sheet, Label Kit (Spanish)	1	1

Mast Assembly

Model - RPL/ RPA 450-1 and RHL/ RHA 450-1

Item Number	Note	Part Number	Description	Quantity Per	
				Package	Assembly
27	C	1130233	NLA - Kit, Label Warning - Bolt Mast w/Instruction - 450 Lift (French/Canadian)	1	1
			Sheet, Label 450 Lift (French-Canadian)	1	1
			Instruction Sheet, Label Kit (French/Canadian)	1	1
28	H	1161593	Package, Rubber Clip	10	1
	C,D,I	1165876	Mast Assembly w/ Attaching Hardware	1	1
2			Screw, Shoulder Hex Socket Head (3/8 x 1-1/2", 5/16-18)	1	1
3			Washer, Flat (3/8 x 11/16 x 1/16")	1	1
4			Locknut (5/16-18)	1	1
5			Screw, Phillips Pan Head (#10-24 x 1/4")	1	3
6			Bracket, Battery - Electric Only	1	1
7			Mast, Electric	1	1
8			Cap, End, Black (1-1/2 x 2-1/2")	1	1
9			Screw, Shoulder Hex Socket Head (3/8 x 2-1/4", 5/16-18)	1	1
18			Label, Warning, Lift, 450 Pound Capacity	1	1
19			Screw, Hex Head (1/2-13 x 2-1/4")	1	1
20			Label, CE Marking	1	1
21			Washer (1/2 x 7/8 x 3/64")	1	2
22			Locknut (1/2-13)	1	1
25			Spacer (3/8 x 5/8 x 11/32")	1	1
26			Locknut (5/16-18)	1	1
29			Bushing (3/8 x 15/32 x 1-3/32")	1	1
			Label, Year of Manufacture	1	1
			Label, Warning Bolt Mast	1	1
			Insert, Carton	1	5
			Insert, Carton	1	1
			Carton	1	1
	C	1133691	Package, Emergency Pull Pin	10	1
	C	10369X000-NLA	NLA - Wrench, Allen (3/16")	1	1
	C,D	1083039-NLA	NLA - Cover, Actuator, Padded with Instructions (Electric Lifts Only)	1	1
	C,D	1079656-NLA	NLA - Label, Warning - EUR	1	1

NOTE: A - After 3/99 it has been determined part number 1025704 is no longer required in the Mast to Actuator Assembly.
B - This item does not include items 16 & 18; these items are not needed in the U.S.
C - Not Shown. On 3/19/2010, the pull pin was replaced with a pull grip that is not serviceable.
D - Electric Only.
E - Includes items 11, 13, 14, and 16.
F - Excludes item 7 (Electric Mast) and 11 - 18.
G - After 8/21/06 the quantity for Locknut 1064267 item 4 changed to Qty 1 for the Mast Assembly. Locknut 1028769 Item 28 was added to the Mast Assembly.
H - Slip over Clip on Handset to provide stable positioning for Handset.
I - Includes items 2, 3-9, 18, 19, 20, 21, 22, 25, 26, 29, Labels, and Cartons.
K - Part #1078273 Actuator Motor is No Longer Available and replaced with part #60126449 Actuator Motor that now includes press-fitted Bushings.
L - Power Cord not included with Charger.