

Electronic Copy: Reference Only



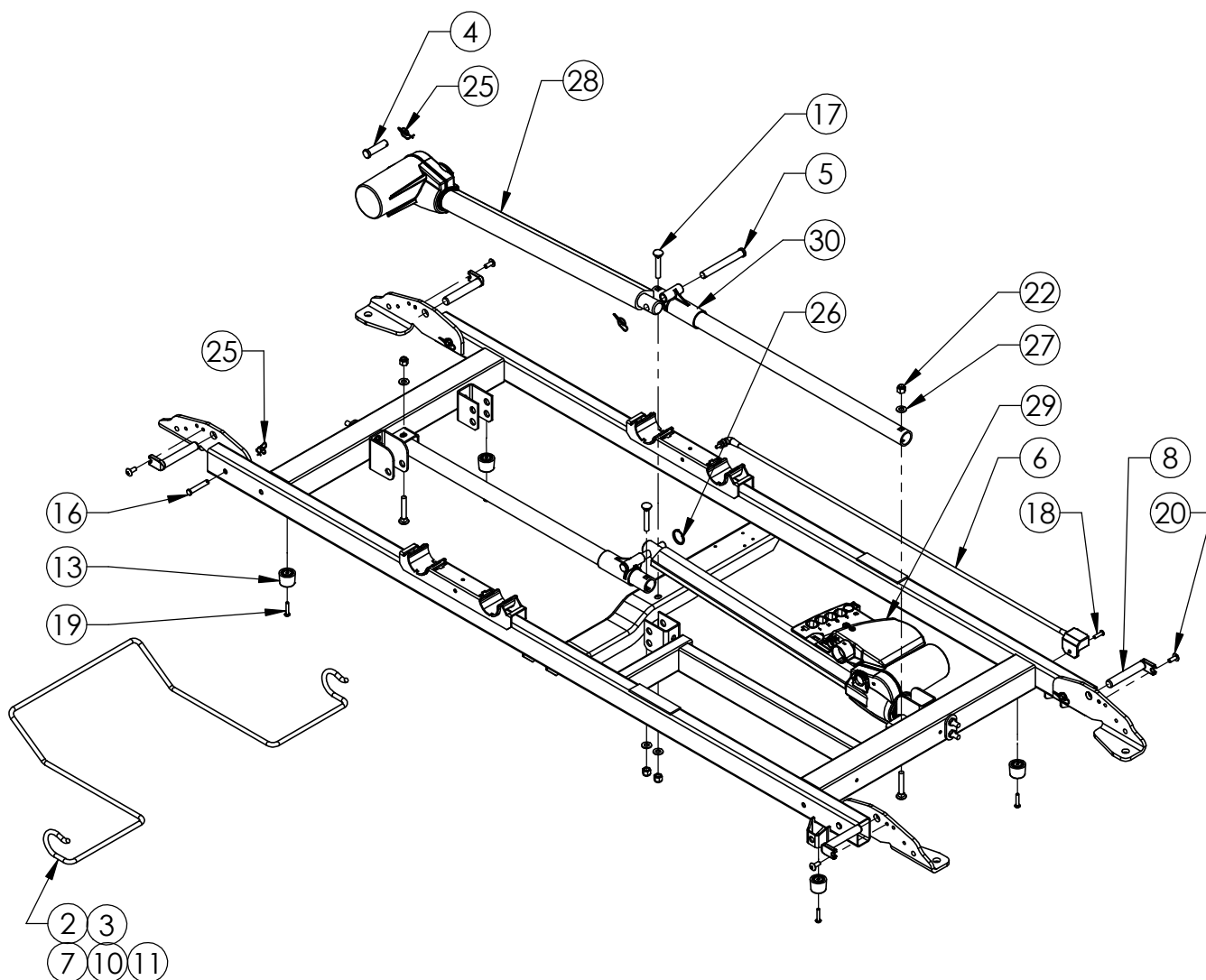
Parts List

Joerns® Bed Frames

EasyCare®

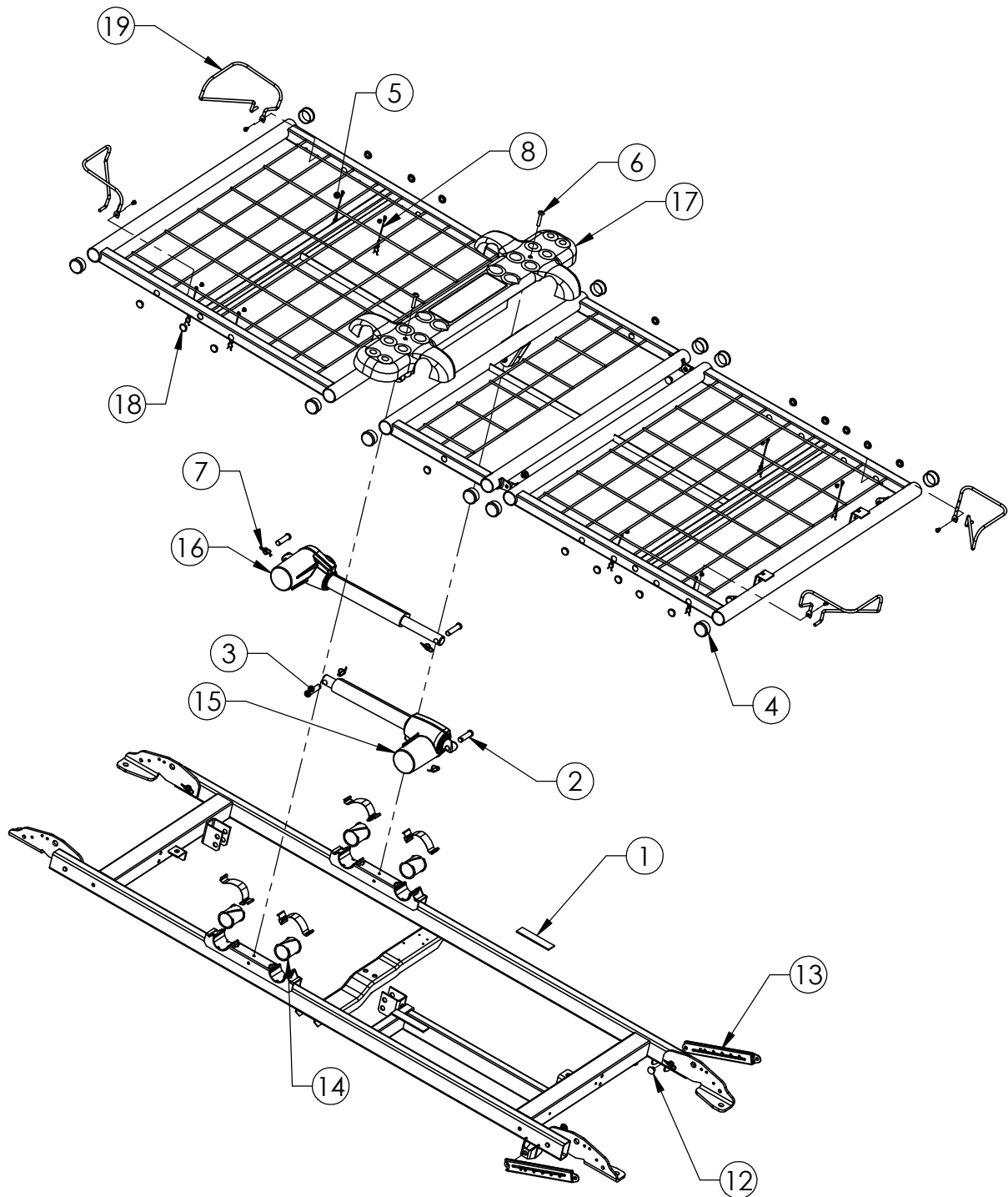
To avoid injury, read user's manual before using.





ITEM NO.	PART NUMBER	DESCRIPTION
NS	N511	KIT, BATTERY BACKUP (BATTERY, CHARGER, HARDWARE)
NS	6110158	MANUAL, USER, EASYCARE
2	11011866AL	BUMPER, WALL, 80"
3	11011899AL	BUMPER, WALL, 80" TRAPEZE
4	11012238	PIN, SLEEP SURFACE PIVOT
5	11012361	PIVOT PIN, LEG/ACTUATOR
6	11012449	CORD, PATCH, BATTERY PACK
7	11012608AL	BUMPER, WALL, TRT/TRAPEZE
8	11012662	PIN, STABILIZER PIVOT
NS	11012840	PENDANT, 8-FUNCTION, ADVANVED
10	11012851AL	BUMPER, WALL, 80" STANDARD
11	11012852AL	BUMPER, WALL, 76" STANDARD
NS	11012990	PENDANT, 6-FUNCTION, STANDARD
13	11013253	BUMPER STOP
16	11014747	PIN, PANEL MOUNTING
17	12523159	BOLT, CARRIAGE, 5/16-18 X 2"
18	12551017	SCREW, THREAD FORMING, #10-32 X 3/4"
19	12551030	SCREW, THREAD FORMING, #10-24 X 1"
20	12552592	SCREW, THREAD FORMING, 1/4-20 X 5/8"
22	12673105	NUT, LOCK, 5/16-18
25	12800032	RING, RUE
26	12809807	RING, KICKOUT
27	12847531	WASHER, 5/16" I.D.
28	39000968	KIT, ACTUATOR, HI/LO (ONE ACTUATOR, TWO HI-LO GLIDES AND ATTACHING HARDWARE)
29	39000967	KIT, CONTROL BOX (CONTROL BOX ONLY)
NS	39000974	KIT, POWER CORD, CLASS 1 (POWER CORD AND CABLE TIES)
NS	39000975	KIT, POWER CORD, CLASS 2 (POWER CORD AND CABLE TIES)
NS	39001051	KIT, CONTROL HARNESS (CONTROL HARNESS AND ATTACHING HARDWARE)
30	39001070	KIT, REPLACEMENT, HI-LO GLIDE (TWO HI-LO GLIDES AND ATTACHING HARDWARE)

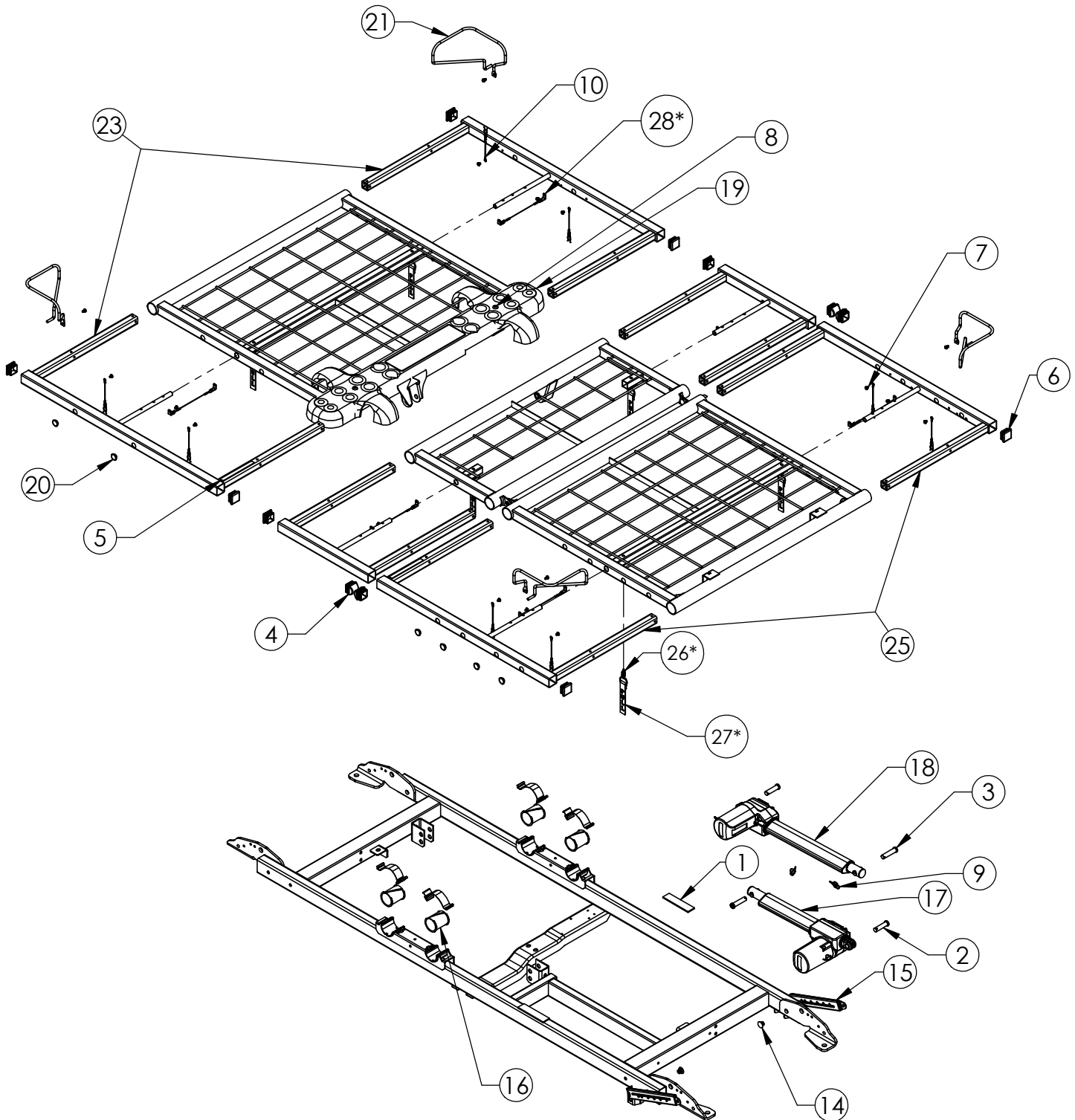
NOTE: GROUND WIRES AND ATTACHING HARDWARE ARE NOT SHOWN - REFER TO LENGTH OF WIRE ASSEMBLIES ON BED IF REPLACEMENT IS REQUIRED



Electronic Copy: Reference Only

MATTRESS SUPPORT
35" FIXED WIDTH
76" AND 80" VERSION
MODELS: EASYCARE

ITEM NO.	PART NUMBER	DESCRIPTION
1	11011331	PAD, STOP, KNEE/LEG
2	11012238	PIN, SLEEP SURFACE PIVOT
3	11014113	PIN, CLEVIS, 12mm X 1.8"
4	12470474	CAP, TUBE, 1.5" DIA.
5	12551015	SCREW, 10-32 X 1/4"
6	12552590	SCREW, 1/4-20 X 1-1/2"
7	12800032	RING, RUE
8	24005271	CLIP ASSEMBLY, SIDE RAIL
12	39000052	KIT, RIVET REPLACEMENT (REPLACES TWO RIVETS)
13	39000794	KIT, FOOT, LEVELER, GATCH (ONE GATCH LEVER AND ATTACHING HARDWARE)
14	39000802	KIT, MATTRESS DECK BEARING (SPRING CLIPS AND BEARINGS FOR BOTH SIDES)
15	39000972	KIT, ACTUATOR, BACK (ACTUATOR AND ATTACHING HARDWARE)
16	39000973	KIT, ACTUATOR, KNEE (ACTUATOR AND ATTACHING HARDWARE)
17	39000980	KIT, SEAT PAN, SOFT TONE (SEAT PAN AND ATTACHING HARDWARE)
18	39001159	KIT, SIDE RAIL PLUGS (16 PLUGS)
19	39001317	KIT, SET, MATTRESS RETAINER (FOUR RETAINERS AND ATTACHING HARDWARE)



* FOR PRODUCT BUILT AFTER OCT 2015

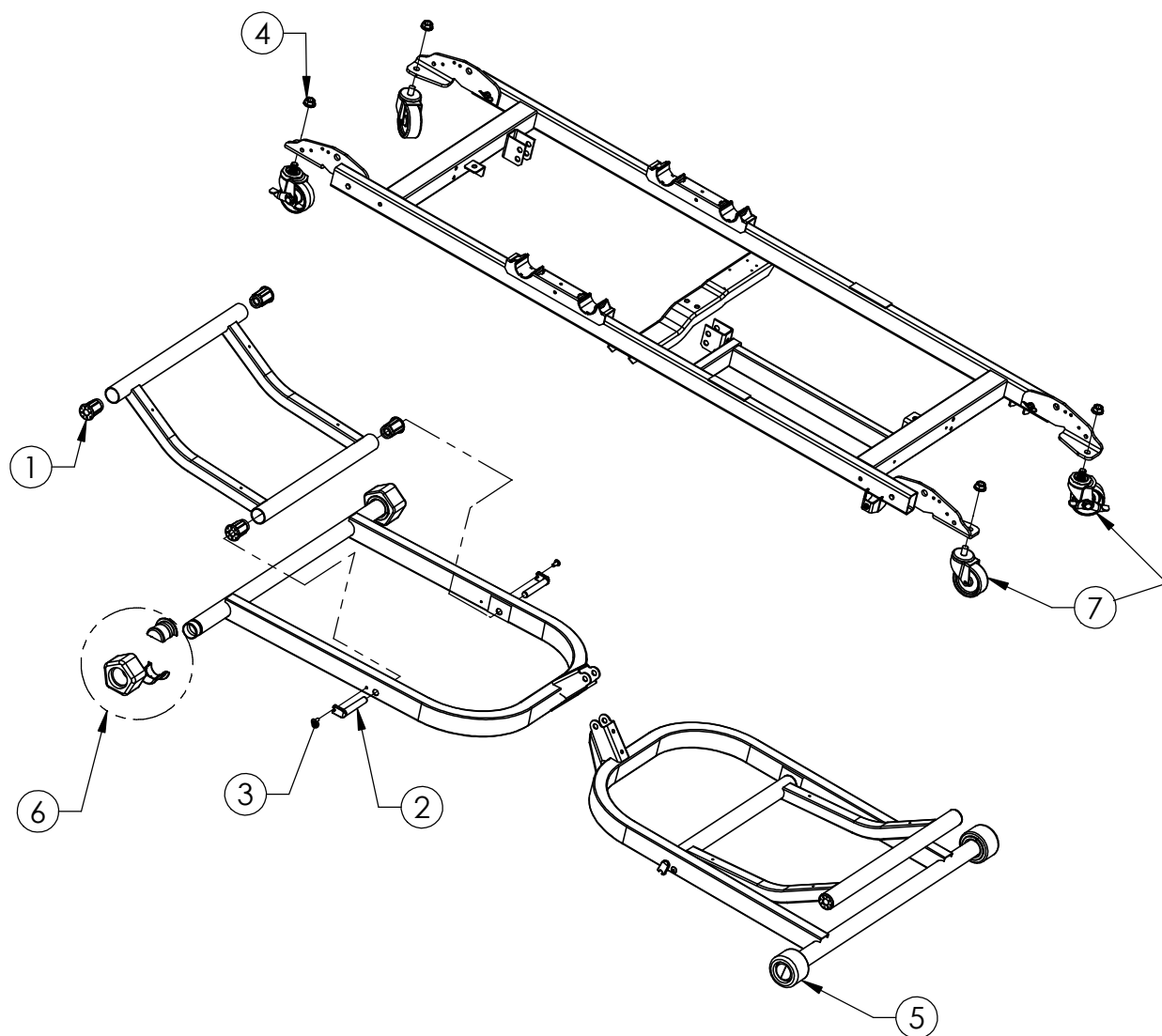
Electronic Copy: Reference Only

MATTRESS SUPPORT
INTEGRATED WIDTH
80" VERSION
MODELS: EASYCARE

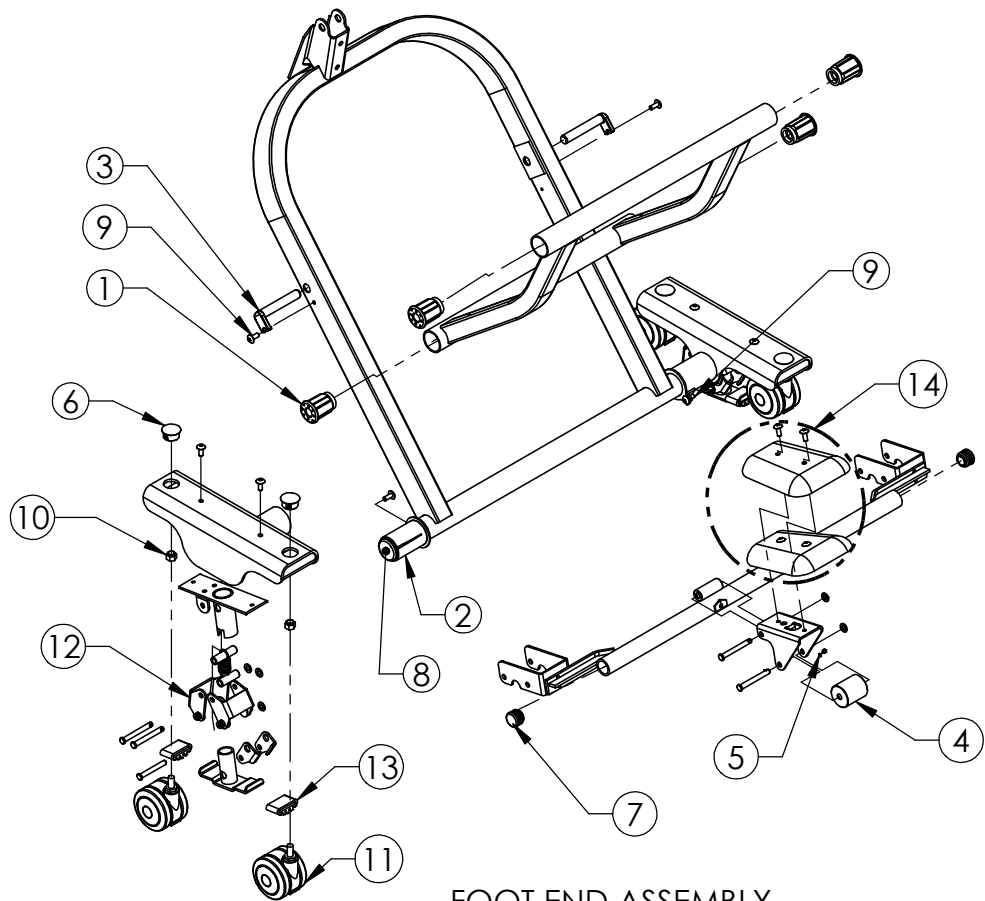
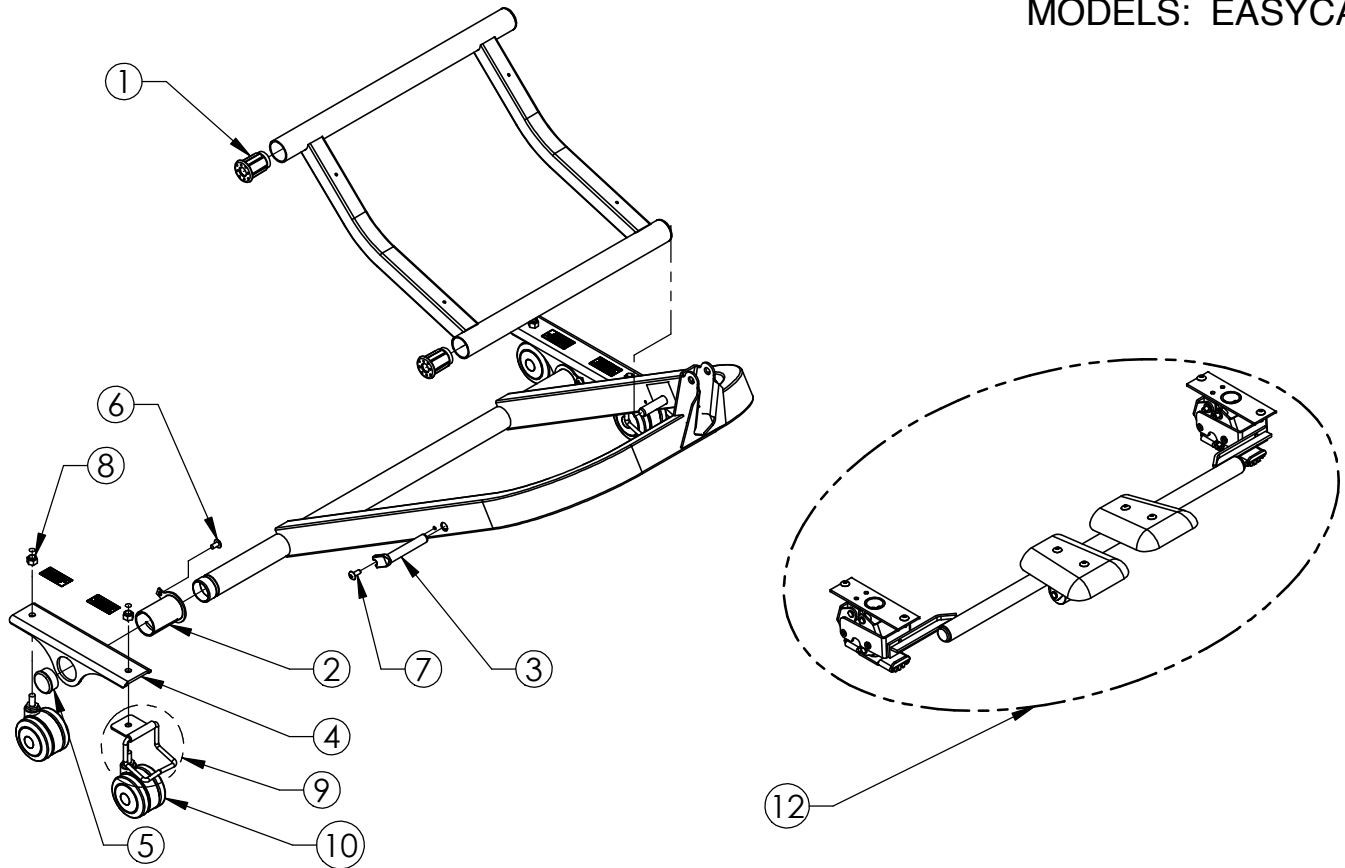
ITEM NO.	PART NUMBER	DESCRIPTION
1	11011331	PAD, STOP, KNEE/LEG
2	11012238	PIN, SLEEP SURFACE PIVOT
3	11014113	PIN, CLEVIS, 12mm X 1.8"
4	11014727	PLUG, DOMED, TUBE
5	11014734	LABEL, INDEXING
6	12470477	CAP, 1 1/4"
7	12551015	SCREW, THREAD FORMING, #10-32 X 1/4"
8	12552590	SCREW, THREAD FORMING, 1/4-20 X 1 1/2"
9	12800032	RING, RUE
10	24005271	CLIP ASSEMBLY, SIDE RAIL
14	39000052	KIT, RIVET, REPLACEMENT (REPLACES TWO RIVETS)
15	39000794	KIT, FOOT, LEVELER, GATCH (ONE GATCH LEVER AND ATTACHING HARDWARE)
16	39000802	KIT, MATTRESS DECK BEARING (SPRING CLIPS AND BEARINGS FOR BOTH SIDES)
17	39000972	KIT, ACTUATOR, BACK (ACTUATOR AND ATTACHING HARDWARE)
18	39000973	KIT, ACTUATOR, KNEE (ACTUATOR AND ATTACHING HARDWARE)
19	39000980	KIT, SEAT PAN, SOFT TONE (SEAT PAN AND ATTACHING HARDWARE)
20	39001159	KIT, SIDE RAIL PLUGS (16 PLUGS)
21	39001317	KIT, SET, MATTRESS RETAINER (FOUR RETAINERS AND ATTACHING HARDWARE)
NOT SHOWN**	39001372	KIT, TETHER AND GRAVITY PIN (SIX GRAVITY PINS, SIX WIRE TETHERS AND ATTACHING HARDWARE)
23	39001373AL	KIT, HEAD SECTION, SLIDE OUT EXTENSION (EXTENSIONS FOR BOTH SIDES)
24	39001374AL	KIT, KNEE SECTION, SLIDE OUT EXTENSION (EXTENSIONS FOR BOTH SIDES)
25	39001375AL	KIT, FOOT SECTION, SLIDE OUT EXTENSION (EXTENSIONS FOR BOTH SIDES)
26*	11015773	PIN, SPRING PLUNGER
27*	11015774	TETHER, PULL
28*	39001470	KIT, TETHER AND HARDWARE (SIX WIRE TETHERS AND ATTACHING HARDWARE)

* NOT USED ON PRODUCT BUILT PRIOR TO OCT 2015

**KIT 39001372 USED ON PRODUCT PRIOR TO OCT 2015



ITEM NO.	PART NUMBER	DESCRIPTION
1	11011230	BUSHING, STABILIZER
2	11012662	PIN, STABILIZER PIVOT
3	12552592	SCREW, THREAD FORMING, 1/4-20 X 5/8"
4	12675024	NUT, 1/2-13 WHIZ LOCK
5	39000792	KIT, ROLLER HUB, ROUND (ONE HUB ASSEMBLY AND ONE ROLLER)
6	39000793	KIT, ROLLER HUB, PENTAGON (ONE HUB ASSEMBLY AND ONE PENTAGON)
7	39000874	KIT, CASTERS (FOUR CASTERS AND ATTACHING HARDWARE)



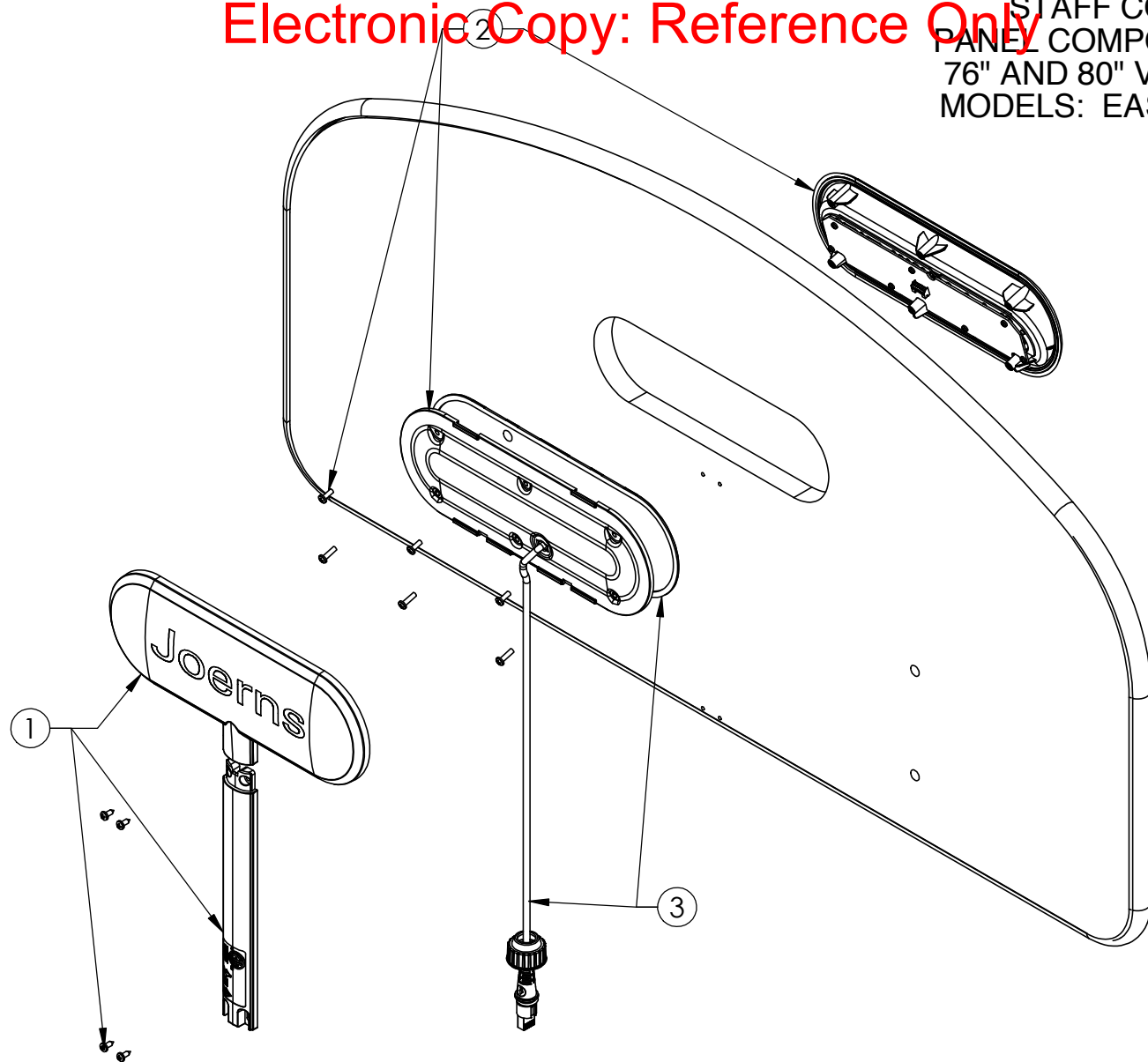
FOOT END ASSEMBLY

HEAD END ASSEMBLY

ITEM NO.	PART NUMBER	DESCRIPTION
1	11011230	BUSHING, STABILIZER
2	11012241	BEARING, GRIPLOCK
3	11012662	PIN, STABILIZER PIVOT
5	12470474	CAP, TUBE, 1 1/2" DIA.
6	12552586	SCREW, THREAD FORMING, 1/4-20 X 1/2"
7	12552592	SCREW, THREAD FORMING, 1/4-20 X 5/8"
8	12673718	NUT, LOCK, 3/8-16
9	31009115	ASSEMBLY, CASTER, STRAIGHT LINE
10	39001041	KIT, CASTER 3-INCH (ONE CASTER AND ATTACHING HARDWARE)

FOOT END ASSEMBLY

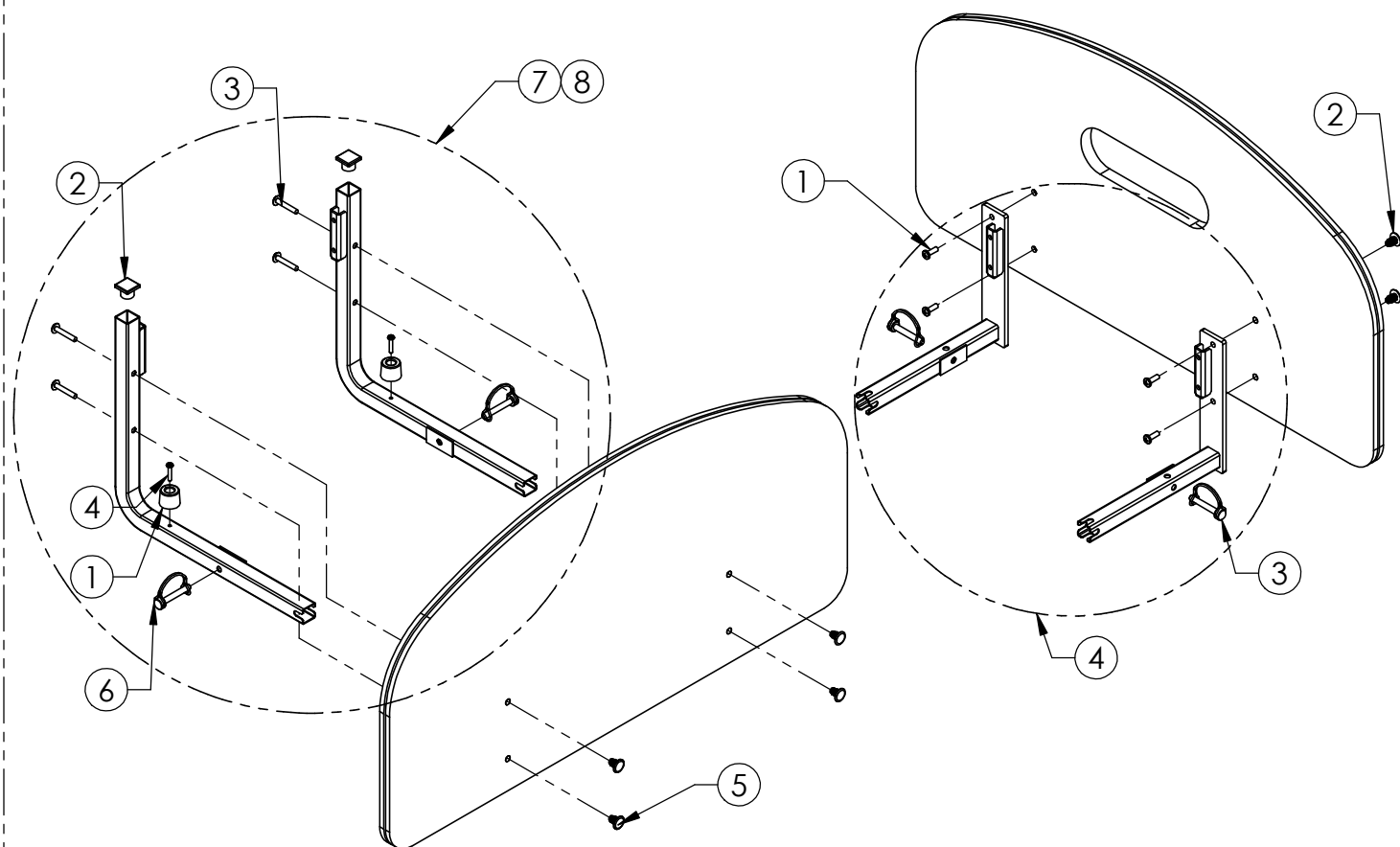
ITEM NO.	PART NUMBER	DESCRIPTION
1	11011230	BUSHING, STABILIZER
2	11012241	BEARING, GRIPLOCK
3	11012662	PIN, STABILIZER PIVOT
4	39001378	KIT, SPRING AND ROLLER (SPRING AND ROLLER)
5	39001378	KIT, SPRING AND ROLLER (SPRING AND ROLLER)
6	12470037	1" DIA. HOLE PLUG
7	12470472	CAP, TUBE, 1.125" DIA.
8	12470474	CAP, TUBE, 1.5" DIA.
9	12552592	SCREW, THREAD FORMING 1/4-20 X 5/8"
10	12673718	NUT, LOCK, 3/8-16
11	39001041	KIT, CASTER, 3-INCH (ONE CASTER AND ATTACHING HARDWARE)
12	39001371AL	KIT, CARELOCK SUBASSEMBLY (FULL SUBASSEMBLY INCLUDING PEDALS, GRIP PADS, SPRING AND ROLLER, AND ATTACHING HARDWARE)
13	39001376	KIT, PAD, GRIPS (FOUR GRIP PADS)
14	39001377	KIT, FLOOR LOCK, PEDALS (BOTH PEDALS AND ATTACHING HARDWARE)



ITEM NO.	PART NUMBER	DESCRIPTION
1	39001013	KIT, STAFF CONTROL, COVERS, BROWN (BOTH REAR COVERS AND ATTACHING HARDWARE)
	39001114	KIT, STAFF CONTROL, COVERS , SOFT TONE (BOTH REAR COVERS AND ATTACHING HARDWARE)
2	39001007	KIT, STAFF CONTROL, STANDARD, BROWN (FRONT AND REAR ASSEMBLIES AND ATTACHING HARDWARE)
	39001112	KIT, STAFF CONTROL, STANDARD, SOFT TONE (FRONT AND REAR ASSEMBLIES AND ATTACHING HARDWARE)
	39001009	KIT, STAFF CONTROL, ADVANCED, BROWN (FRONT AND REAR ASSEMBLIES AND ATTACHING HARDWARE)
	39001113	KIT, STAFF CONTROL, ADVANCED, SOFT TONE (FRONT AND REAR ASSEMBLIES AND ATTACHING HARDWARE)
3	39001016	KIT, STAFF CONTROL, CABLE AND COVER (REAR ASSEMBLY AND ATTACHING HARDWARE)

HEAD PANEL ASSEMBLY

FOOT PANEL ASSEMBLY MODELS: EASYCARE



HARDWARE, HEAD PANEL

ITEM NO.	PART NUMBER	DESCRIPTION
1	11013253	BUMPER, STOP
2	12470467	CAP, TUBE, 1" x 1"
3	12542588	SCREW, MACHINE, 1/4-20 X 1 1/2"
4	12551030	SCREW, THREAD FORMING, #10-24 X 1"
5	12470467	NUT, THREAD INSERT, 1/4-20
6	12793116	PIN, SAFETY, 5/16" X 2"
7	39001366AL	KIT, HEAD SECTION, PANEL MOUNTING 76" (ALL PARTS DEPICTED EXCEPT PANEL INSERTS)
8	39001379AL	KIT, HEAD SECTION, PANEL MOUNTING 80" (ALL PARTS DEPICTED EXCEPT PANEL INSERTS)

HARDWARE, FOOT PANEL

ITEM NO.	PART NUMBER	DESCRIPTION
1	12542590	SCREW, MACHINE, 1/4-20 X 3/4"
2	12640029	NUT, THREAD INSERT, 1/4-20
3	12793116	PIN, SAFETY, 5/16" X 2"
4	39001380AL	KIT, FOOT SECTION, PANEL MOUNTING (ALL PARTS DEPICTED EXCEPT PANEL INSERTS)

Electronic Copy: Reference Only

Joerns® Bed Frames
EasyCare®

Notes:



Post Acute, Acute, HomeCare
2430 Whitehall Park Dr. Ste 100
Charlotte, NC 28273
(P) 800.826.0270
(F) 800.457.8827

VA/Government
19748 Dearborn Street
Chatsworth, CA 91311
(P) 800.966.6662
(F) 800.232.9796

Canadian Office
1000 Clarke Rd. Ste 6
London, ON Canada N5V 3A9
(P) 866.546.1151
(F) 519.451.8662

**United Kingdom and
Other Countries**
+44 (0)844 811 1156
+44 (0)844 811 1157

Netherlands
+31 (0)30 6363700
+31 (0)30 6363799