



Panacea®

3250, 3500 & 8000 BED

Quick Setup Guide

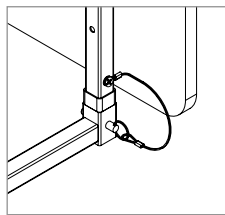
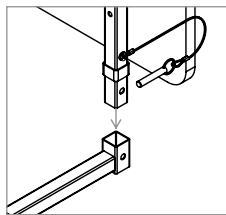
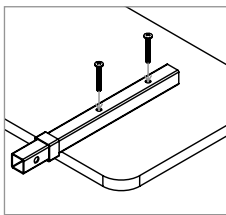
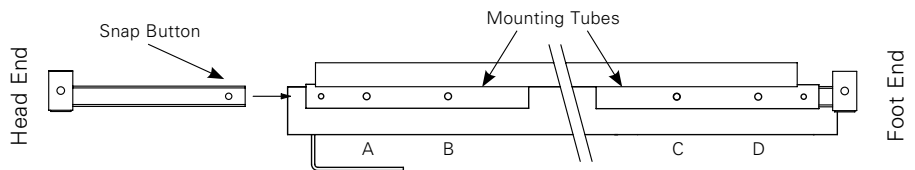
General Warning: Read and follow all directions and warnings before using the device. At least two people are needed to complete setup. Do not operate the device without first reading and understanding the device's user manual. Damage or injury may result from improper use of the device. This quick-start guide is not a substitute for reading and understanding the device's user manual.

Hardware Pack

- Locate your hardware pack in a brown corrugated box, attached to your bed frame.
- Inspect contents before use (see manual for full list of hardware). Do not proceed if any hardware is missing.
- Inspect shipment to ensure all ordered options and accessories have been delivered.

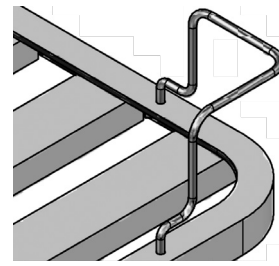
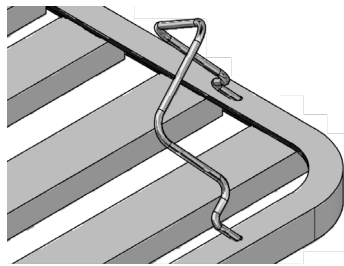
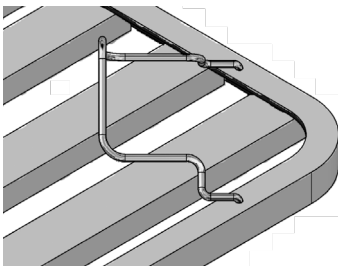
Headboards and Footboards

1. Discard shipping feet (if applicable).
2. Insert end panel brackets into the mounting tube.
3. Attach vertical brackets to end panels and tighten all hardware.
4. Place vertical brackets into end panel brackets.
5. Slide pin through brackets to secure.



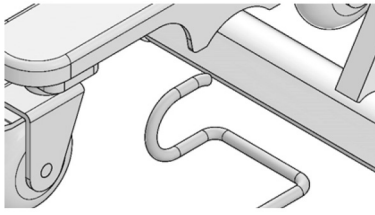
Bed Length	Headboard Bracket Hole	Footboard Bracket Hole
80"	B	C
84"	B	D

Corner Mattress Retainers

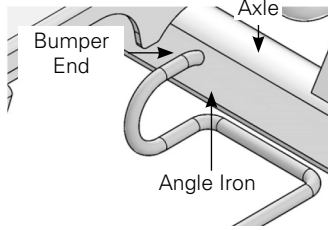


1. Locate two ¼" holes at each bed corner in the outer angle of the head and foot deck. Insert each leg of the Mattress Retainer.
2. With the leg of each side of the Mattress Retainer positioned in the ¼" holes, rotate the Retainer toward the corner of the bed while slowly inserting the legs further into the holes.
3. When fully rotated, press the Mattress Retainer into position and then place the mattress on the rib-deck sleep surface. Check that all corners of the mattress are within the Retainers. A slightly compressed fit is desired.

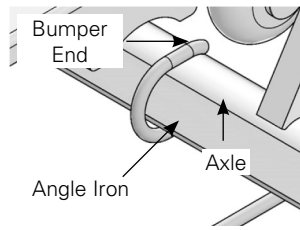
Wall Bumper Roll In Low Beds



1. With the bed resting on its wheels or rollers, place the bumper in front of the axle of the head-end caster base

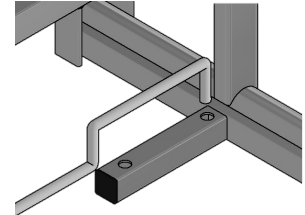


2. Place the loops of the bumper so that the Bumper End is positioned next to the Angle Iron and Axle of the head-end caster base



3. Use a rubber mallet to force the bumper ends over the Angle Iron and Axle of the head-end caster base

Wall Bumper Mobile at Any Height Beds



Insert bumper into the holes on the head caster base, closest to the leg.

Safety Zip-Ties

⚠ WARNING: Bed must be upright and placed flat on its feet or casters before cutting pink or orange zip-ties

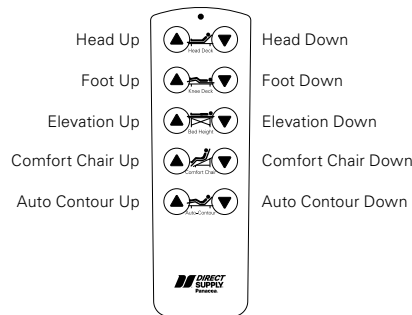
- Cut pink and orange zip-ties used to secure decks and legs during shipping – DO NOT CUT WHITE ZIP-TIES USED TO ROUTE WIRES UNDER BED
- If needed, cut additional zip-ties used to secure the handset and/or power cord

Assist Devices

If applicable, install assist devices according to the manufacturer's directions.

Handset

- Plug your handset into a handset port
- Operating the handset: see image



PANACEA 3500 and 8000 ONLY


Adjust expansion decks to desired length and width.

3250/3500/8000 Handset

PANACEA 8000 WITH SCALE ONLY

⚠ WARNING: Ensure the bed deck is flat and level prior to entering Scale Mode and performing weight measurements.

⚠ CAUTION: All bed position adjustment functions on the hand pendant and staff control are locked out while in Scale Mode. To adjust the bed deck position, the user must first exit Scale Mode.

Press  to enter Scale Mode. When "~" is displayed on the screen, the weight reading is stable, and the scale is ready to measure the patient's weight.



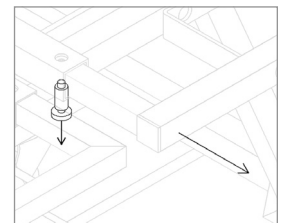
Refer to the user manual for Panacea® 8000 Bed with Scale for calibration instructions.

Important – Mandatory Check

Conduct an entrapment assessment to verify there are no gaps between the mattress, headboards and footboards, siderails or any other accessories wide enough to entrap a resident's head, neck or body. Additional information regarding bed entrapment may be obtained from the U.S. Food and Drug Administration Center for Devices and Radiological Health website.

Your bed is ready for use. The bed should be located in its lowest position and casters should be locked. Adequate spacing must be maintained between the wall and the bed to prevent damage to the bed or walls while raising or lowering the bed. Check to be sure vertical movement of the bed does not interfere with the power cord or plug.

⚠ WARNING: Involuntary bed movement may take place if the bed casters are left unlocked. Involuntary bed movement may lead to property damage or resident injury. Never leave a bed unattended while the casters are unlocked.



Distributed by Direct Supply® Manufacturing™, Inc. 6635 W Champions Way, Milwaukee WI 53223.

© 2023-2024 Direct Supply Manufacturing, Inc. All Rights Reserved. Direct Supply and all associated logos are the registered trademarks of Direct Supply, Inc., used under license. All other trademarks are the property of their respective owners.