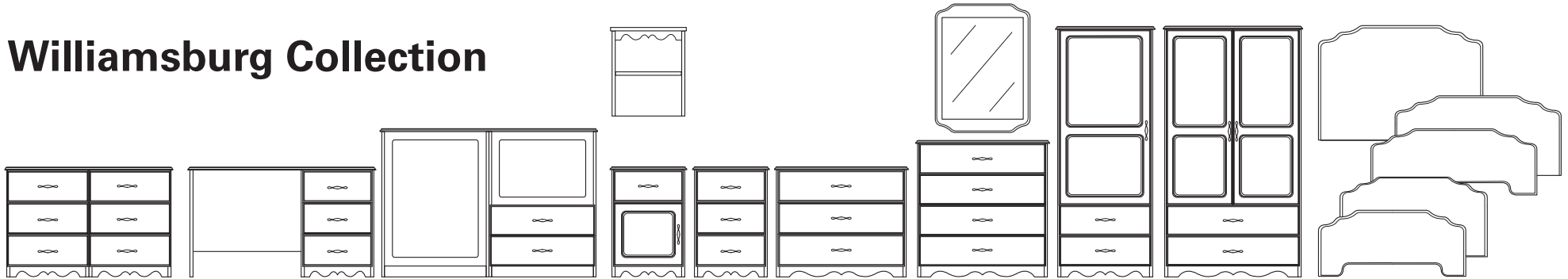


# Williamsburg Collection



Description	Dimensions
1-Door, 1-Drawer Bedside Cabinet*	18½"W x 17½"D x 29½"H
3-Drawer Bedside Cabinet*	18½"W x 17½"D x 29½"H
3-Drawer Chest	32"W x 17½"D x 29½"H
4-Drawer Chest*	32"W x 17½"D x 38"H
6-Drawer Chest	44"W x 17½"D x 29½"H
1-Door, 2-Drawer Wardrobe*	25"W x 25¼"D x 72"H
2-Door, 2-Drawer Wardrobe	36½"W x 25¼"D x 72"H
Hutch for Bedside Cabinet	18"W x 9½"D x 19½"H
Desk	48"W x 17½"D x 29½"H
Hospitality Station	48"W x 20"D x 40¼"H
Mirror	28"W x ¾"D x 38"H
Senior Living Headboard	43"W x 30"H
End Panels, Drilled, Set of 2	Head: 36"W x 20"H Foot: 36"W x 16"H
End Panels, Set of 2*	
End Panels, Drilled, Set of 2	Head: 42"W x 20"H Foot: 42"W x 16"H
End Panels, Set of 2	
Locking Casters, Set of 4	

### Features:

- Thermolaminate and melamine surfaces promote superior moisture resistance and durability
- Durable dowel, glue and screw construction for maximum strength
- ¾-pull Epoxy Euro drawer slides stop for added safety
- Vented back panels promote airflow
- Drawer boxes feature vinyl miter-fold construction for superior moisture resistance
- Locking caster option available on bedside cabinets
- Adjustable-height hanging rod in wardrobes
- Adjustable shelves in units with doors
- Reversible door swing on 1-door, 1-drawer bedside cabinets and 1-door, 2-drawer wardrobes
- Drawer faces can be removed for repair or replacement
- 7-year limited warranty

### Certifications:

- BIFMA X5.5 - 2011 compliant
- TSCA Title VI Compliant

### Customization:

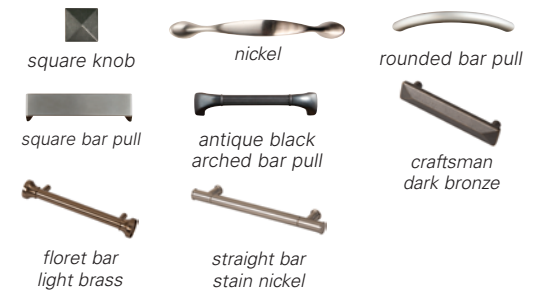
- Customized sizes are available, but may require a minimum quantity and additional production times

### The Quick-Ship Advantage:

Select pieces marked with an (\*) asterisk are guaranteed in stock. Order up to 5 pieces of each product # in cherry mahogany finish, and your order will ship within 5 business days. Additional finishes available with standard lead time.

### Hardware:

- Fixed pull options
- Hidden inset door hinges



### Thermolaminate Finishes



### Toe Kick Styles

