



Direct Supply® Panacea® Transitional Innerspring Mattress



Benefits

- Knit cover is removable for easy laundering
- Medium-firm polyurethane foam topper cradles the body, while embedded 13-gauge innersprings offer uplifting support, for a total mattress height of 8"
- Meets 16 CFR 1633 with Panacea Residential Mattress Foundation
- 350 lb. or 500 lb. (Queen) weight capacity with a 10-year limited warranty
- Medicare HPCPS Code: E0271

#L9111 Twin, 39"W x 75"L x 8"H

#L9112 Twin XL, 39"W x 80"L x 8"H

#L9113 Full, 54"W x 75"L x 8"H

#L9114 Queen, 60"W x 80"L x 8"H

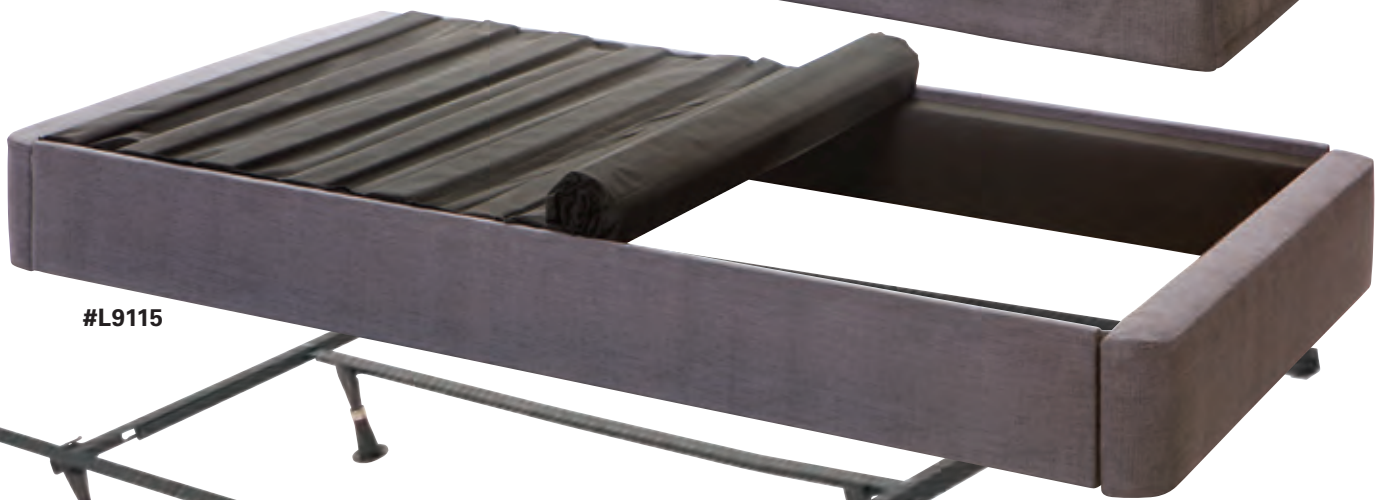


Shop online at DirectSupply.net or call 1-800-634-7328

Direct Supply® Panacea® Transitional Innerspring Mattress



#L9111



#L9115



#32WTD

Panacea® Residential Mattress Foundation

- Unique compact design is easy to install and less cumbersome than a traditional box spring
- Easily assembles in minutes without the use of any tools
- Solid wood construction is durable and provides optimal support for innerspring and foam mattresses alike
- Compatible with most residential bed frames
- 350 lb. or 500 lb. (Queen) weight capacity with a 10-year limited warranty

#L9115 Twin, 39"W x 75"L x 8"H

#L9116 Twin XL, 39"W x 80"L x 8"H

#L9117 Full, 54"W x 75"L x 8"H

#L9118 Queen, 60"W x 80"L x 8"H

Residential Bed Frame

- Designed for use with residential style mattresses and foundations
- Headboard brackets and hardware included
- Easy-to-assemble frame offers sturdy support when used with Panacea Residential Mattress Foundation
- Adjusts easily to accommodate Twin, Twin XL, Full and Queen size mattresses

#32WTD Adjustable Frame to fit Twin, Twin XL, Full, & Queen