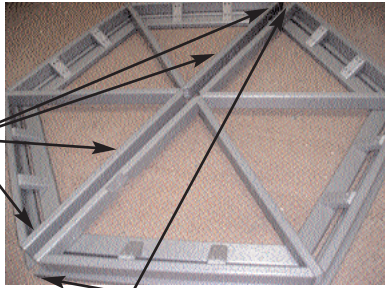


- (1) Table Top (6) Legs
- (2) Bench Assembly

Step 1: Assemble Bench

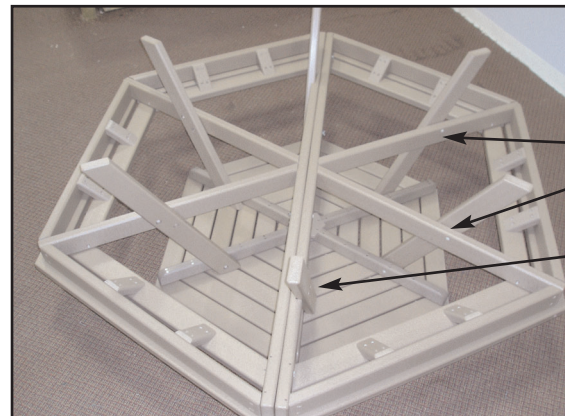
Attach bench halves using (4) 3½" Bolts on each. Tightly Secure each Bolt with a washer and nut.



Complete the Bench assembly using (1) 3" screw into each bench end.

Step 3: Position and Attach Bench Assembly

Using planking or other solid material, raise the bench assembly up off the bottom of the table top to it's appropriate height before attaching legs as shown.



Assembly Instructions - Hexagon Table

Necessary Tools: 7/16" Wrench & #2 Phillips Screw Driver

Hardware Enclosed

- | | |
|---------------|---------------|
| (14) 3" Bolts | (2) 3" Screws |
| (4) 3½" Bolts | (22) Washers |
| (4) 4" Bolts | (22) Nuts |

IMPORTANT: Pilot holes have been drilled for your convenience. Plastic may expand/contract during shipping and require pulling/twisting to realign holes or a rubber hammer to force bolts into holes.



Completed Assembly

Step 2: Lay-Out Pieces & Attach Legs

IMPORTANT: Lay Table Top **Face Down** On a Smooth Surface

Unit is assembled UPSIDE DOWN. Lay Table Top face down and rest bench assembly upside down on top of it. Attach each of the (6) legs to the table top frame using (6) 3" Bolts, and secure each Bolt with a washer and nut.

Nut & Washer are to be placed in countersunk side of leg to avoid contact with skin. Do Not tighten at this time.



Attach bench assembly to the (6) legs. At the four single frame board locations, use (2) 3" bolts (8 bolts total), and at the two double frame board locations use (2) 4" bolts (4 bolts total). Secure each Bolt with a washer and nut. Tighten all Nuts & Bolts including those from Step #2.

Table and Components are Heavy.
Use Appropriate Manpower

Questions ? Call (877) 220-0448

Packaged By: _____