



# Fabric & Finish *Selection Guide*

Get inspired with fabrics  
for every style

**DIRECT**  
**SUPPLY**<sup>®</sup>



# Shop by color

Peruse pages 4 - 27 to shop trendy and timeless fabric schemes curated by our professional design consultants.

## Shop by pattern type

See pages 28 - 38 for top-selling fabrics arranged by pattern type. The dollar symbols on each page indicate where those fabrics fall on the pricing spectrum. Since pricing on upholstered furniture varies depending on the fabric you select, your account manager can give you specific product pricing based on the fabrics you like and help you find options that best fit your budget.

Our selection goes far beyond this fabric and finish guide. Contact Direct Supply to navigate our expansive fabric selection and custom finish options to find the ideal style for your community.

**Fabric Schemes . . . . . 4 - 27**

**Woven Performance  
Fabrics . . . . . 28 - 38**

**Vinyl. . . . . 39 - 43**

**Finishes . . . . . 44 - 45**

**Quick-Ship Fabrics . . . . . 46 - 47**

*Fabric patterns are reduced to show the best view of each fabric. We have done our best to represent color accurately, but printing processes and lot selections vary. Please request specific fabric samples for optimum pattern and color matching.*



Maxwell Thomas Zillah Activity Chair #22X38 shown in moquette versailles (back) and nexus doeskin (seat) with aubergine finish. Enfield Banquette #2MT42 shown in helene floral jade (back) and nexus doeskin (seat) with mocha finish. Batavia Lounge Chair #2MT59 shown in essence charcoal (seat), Nile Amethyst (outside back) and dahleigh perennial (inside back) with mocha finish. Vidalia Glider #M3854 shown in 3953MG summer lighting (seat) and boost stardust (back) with corduroy finish.

# Create exceptional spaces

when you partner with  
our design consultants

Whether you're looking to coordinate one new piece with your existing décor or fully renovate an entire room, Direct Supply's professional design consultants can help you create a sought-after look. Our experts have the design knowledge and Senior Living expertise to help you efficiently navigate our extensive selection and find the perfect furnishings, fabric and finish combinations for your space.

**Call 1-800-634-7328 to take your vision to the next level with the help of our design consultants!**



See this fabric scheme on page 7.

*Fabrics shown may require moisture-barrier and antimicrobial treatments to hold up in Senior Living environments. Contact your account manager to learn more.*

a

g

b

# playful palette

Infuse bold patterns and colors to make a statement.

c

*Fabrics shown may require moisture-barrier and antimicrobial treatments to hold up in Senior Living environments. Contact your account manager to learn more.*



Creole Spice

- a. origin tortilla
- b. quest monarch
- c. linen majestic
- d. crisscross tango
- e. alias cerulean
- f. cove amber

Maxwell Thomas® Fabrics\*

- g. rinderle sundrenched
- h. wandering grace hazel

\*To use Maxwell Thomas® fabrics on brands other than Maxwell Thomas® furnishings, contact Direct Supply. Certain restrictions apply.



Sunbleached Teak

- a. *mimic typhoon*
- b. *essay thyme*
- c. *reserve buttercream*
- d. *memoir cola*
- e. *adorn plume*

a

b



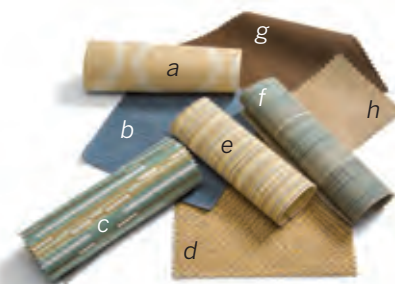
## nature- inspired shades

Heather Furness *Design Consultant*

*“Create a sense of calm with natural tones. Blue reminds us of the sky and ocean, while cream and brown pay homage to the earth. Natural shades tend to have a soothing effect wherever you use them.”*

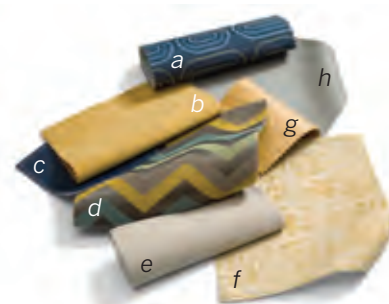
### Spring Showers

- a. liliana honey
- b. reserve satellite
- c. uptown riverview
- d. chalet glitz
- e. backstreet lemon
- f. bravada seaside
- g. origin coffee
- h. ophidian wheat



### Golden Armada

- a. roundabout galactic
- b. velour maize
- c. assured deepwater
- d. quake grotto
- e. reserve stone
- f. dejo limonata
- g. rattan honey
- h. vector greystone



Fabrics shown may require moisture-barrier and antimicrobial treatments to hold up in Senior Living environments. Contact your account manager to learn more.



## Vintage Heirloom

- a. limelight spiced
- b. geode coin
- c. candid aquamarine
- d. vintage english toffee
- e. keyhole redstone

### Maxwell Thomas® Fabrics\*

- f. storybrooke blossom

\*To use Maxwell Thomas® fabrics on brands other than Maxwell Thomas® furnishings, contact Direct Supply. Certain restrictions apply.

a

b

# moody medley

Spruce up any space with deep hues and luxe patterns.







c

d

e

g



c

b

a

d

e

f

### Hazel Pond

- a. bonanza pebble
- b. vintage whisper
- c. liliana sea green
- d. essay oyster
- e. role model hillside
- f. inside edge greige
- g. tabloid cruise
- h. nils horizon
- i. windsor maple



# theme & variation

*Jeanna Swiatkowski Interior Design Team Lead*

*"Whether you're replacing one piece of furniture or revamping an entire room, my team can help you coordinate your new and existing furnishings. We can also help you create different design themes and color schemes for unique atmospheres throughout your community. This differentiation can help residents and guests navigate throughout your community more easily. Work with us to create memorable design themes that appeal to your diverse resident population."*

## Cordovan Suit

- a. pioneer cobble
- b. ophidian maple
- c. branch out dove
- d. annex oyster
- e. mandalay bali brown
- f. fuzzy flannel
- g. chalet biscotti

Maxwell Thomas® Fabrics\*

- h. steel city cardamom



## Exotic Mahogany

- a. rush hour fiesta
- b. portrait persimmon
- c. runway sepia
- d. undercover cowboy
- e. sync tangerine
- f. portrait seascape
- g. origin carob

Maxwell Thomas® Fabrics\*

- h. bostwick perplex



*\*To use Maxwell Thomas® fabrics on brands other than Maxwell Thomas® furnishings, contact Direct Supply. Certain restrictions apply.*

*Fabrics shown may require moisture-barrier and antimicrobial treatments to hold up in Senior Living environments. Contact your account manager to learn more.*



g

f

c

a

# coastal chic

Bring the outdoors in with seaside shades.



Dockside

- a. mimic marsh
- b. canteen garden
- c. syllabus pacific
- d. nexus doeskin
- e. beeline ivy
- f. portfolio lagoon

Maxwell Thomas® Fabrics\*  
g. wandering grace collins

\*To use Maxwell Thomas® fabrics on brands other than Maxwell Thomas® furnishings, contact Direct Supply. Certain restrictions apply.



a

b

c

d

e

f

g

*Fabrics shown may require moisture-barrier and antimicrobial treatments to hold up in Senior Living environments. Contact your account manager to learn more.*

### Sweet Basil

- a. role model hillside
- b. portrait zinc
- c. sync tangerine
- d. reserve glacier
- e. syllabus grass
- f. limelight tranquil
- g. origin walnut
- h. esprit flint grey
- i. triad lemon lime

h



### Smoky Oak

- a. outback dolphin
- b. tabloid baltic
- c. brandenburg putty
- d. pathway navy
- e. mimic shale
- f. chalet tortoise

Maxwell Thomas® Fabrics\*

g. gillingham beguiled

\*To use Maxwell Thomas® fabrics on brands other than Maxwell Thomas® furnishings, contact Direct Supply. Certain restrictions apply.

### Urban Loft

- a. origin gravel
- b. bounce sepia
- c. essay cocoon
- d. nexus buttercream
- e. rattan pearl
- f. linen weathered
- g. sonic gull
- h. opus frost
- i. format river rock



### Refined Patina

- a. boutique wheat
- b. villa granite
- c. dancing leaves silver
- d. liliana graphite
- e. bandwidth dijon
- f. tabloid soot
- g. vintage coal



## transform your furniture

Angela Kehl Design Consultant

"The fabric you choose can completely transform the style of your furniture. Mix and match furniture and fabrics from traditional to contemporary to create unique looks. Or pair like-styled furniture and fabrics to maintain a uniform look. The options are truly endless – that's why I'm here to help you find the perfect selections for your community."



## Lakeshore Cottage

- a. cove iceberg
- b. mecca doe
- c. undercover spearmint
- d. milano irish cream
- e. switchback jewel

Maxwell Thomas® Fabrics\*

- f. pasilla celestial

\*To use Maxwell Thomas® fabrics on brands other than Maxwell Thomas® furnishings, contact Direct Supply. Certain restrictions apply.



*d* *c*  
**cool hues**

Create relaxing settings with beautiful blues and gorgeous greens.

*Fabrics shown may require moisture-barrier and antimicrobial treatments to hold up in Senior Living environments. Contact your account manager to learn more.*



a

b

c

d

g

h

i

j

### Cotton Bud

- a. opus chiffon
- b. tabloid mercury
- c. melody oat
- d. mila linen
- e. vintage dove
- f. milano oatmeal
- g. nexus buttercream
- h. guru vanilla bean
- i. reserve buttercream
- j. liliana quartz

e

f



fabric schemes

f

a

b

e

### Lemon Meringue

- a. turnaround mercury
- b. ambition 508 maize
- c. fuzzy turmeric
- d. mandalay moroccan silver
- e. outback eclipse
- f. bungalow salt & pepper
- g. mercury metal

c

g

d

# subtle shades

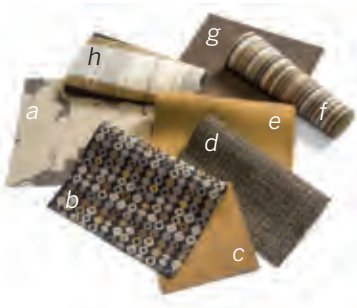
Muted tones set the stage for punchy accent pieces and pops of color.

## American Farmhouse

- a. bloom porcelain
- b. missing link birch
- c. assured caramel
- d. valet umber
- e. chroma honeycomb
- f. imperial gingerbread
- g. carrara tan

Maxwell Thomas® Fabrics\*

h. gillingham antique



## Country Cabin Chic

- a. beeline honey
- b. velour grove
- c. switchback sandalwood
- d. journal mahogany
- e. annex oyster
- f. amenity herb
- g. geode chestnut

Maxwell Thomas® Fabrics\*

h. dahleigh sepia



\*To use Maxwell Thomas® fabrics on brands other than Maxwell Thomas® furnishings, contact Direct Supply. Certain restrictions apply.

Fabrics shown may require moisture-barrier and antimicrobial treatments to hold up in Senior Living environments. Contact your account manager to learn more.

# mixed materials

Choose sophisticated shades that play well with a variety of materials.

## Willow Plank

- a. annex honey
- b. assured espresso
- c. pigment icing
- d. chalet tortoise
- e. mandalay alchemy

a

b

Fabrics shown may require moisture-barrier and antimicrobial treatments to hold up in SeniorLiving environments. Contact your account manager to learn more.

c

d

e



## Refined Patina

- a. dancing leaves silver
- b. bandwidth dijon
- c. liliana graphite
- d. vintage coal
- e. boutique wheat
- f. villa granite
- g. tabloid soot



### Royal Raven

- a. chalet cobblestone
- b. syllabus salt
- c. exhibition 609 chinchilla
- d. windsor black diamond
- e. engrave metal
- f. mimic truffle



## define your fabric scheme

Sarah Wishav *Design Consultant*

*"Sifting through hundreds of fabric options throughout the entire color spectrum can be daunting! Start by identifying the tones and patterns that resonate with your community's style. Once you know what type of look you are trying to achieve, I can help you select the ideal fabric scheme for your community."*

### Pixie Dust

- a. enroute quartz
- b. role model wisteria
- c. assured stingray
- d. outback lilac
- e. marni wisteria
- f. jonquil-c ash rose
- g. valet lavender
- h. guru wisteria

Maxwell Thomas® Fabrics\*

i. priux amethyst



### Eggplant Denim

- a. outback autumn
- b. undercover vapor
- c. chalet cranberry
- d. limelight galaxy
- e. backstreet quartz
- f. reserve satellite

Maxwell Thomas® Fabrics<sup>1</sup>

g. gillingham beguiled



\*To use Maxwell Thomas® fabrics on brands other than Maxwell Thomas® furnishings, contact Direct Supply. Certain restrictions apply.

Fabrics shown may require moisture-barrier and antimicrobial treatments to hold up in Senior Living environments. Contact your account manager to learn more.



a

b

c

### Copper Valley

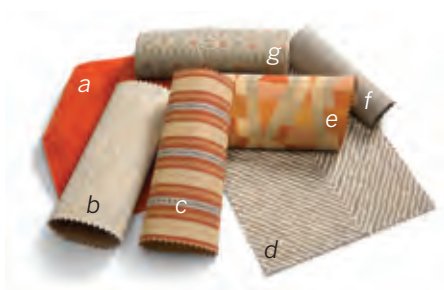
- a. movement 37 lagoon
- b. cove toast
- c. crisscross flax
- d. waterline mineral
- e. keup trails stormy

Maxwell Thomas® Fabrics\*



# luxe textures

Select from an array of patterns and colors for immersive tactile experiences.



## Turning Leaves

- a. fuzzy persimmon
- b. mimic vanilla
- c. headline amber
- d. chalet white sand
- e. exhibit v
- f. mercury mineral
- g. japonica mandarin dot



## Coral Candy

- a. gilded mulberry
- b. outline torch
- c. triad candy crush
- d. roam blonde
- e. vector parchment
- f. accolade watermelon
- g. sync tangerine

Maxwell Thomas® Fabrics\*

- h. floral envy cerise

\*To use Maxwell Thomas® fabrics on brands other than Maxwell Thomas® furnishings, contact Direct Supply. Certain restrictions apply.

Fabrics shown may require moisture-barrier and antimicrobial treatments to hold up in Senior Living environments. Contact your account manager to learn more.

Moroccan Estate

- a. linen eggshell
- b. brandenburg meyer lemon
- c. sync persimmon
- d. pioneer embark
- e. cottage aquatic
- f. outline resort
- g. geode sunkist
- h. pasilla crimson

Maxwell Thomas® Fabrics\*

h

a

b

c



## increase visibility for aging eyes

Megan Rivette Design Consultant

*"Help residents with reduced eyesight by using a warm red color palette. Bold red and gold colors are easier for aging eyes to distinguish over pastel hues, like light blues and greens. Additionally, creating color contrast throughout your space helps differentiate between major pieces of furniture, walls, drapes and floors."*



### Vivid Summer

- a. crisscross plum
- b. waterline sea green
- c. origin carbon
- d. viewpoint burlap
- e. annex plum
- f. shadowplay limonata
- g. nexus sahara
- h. static 71 plum

Maxwell Thomas® Fabrics\*

- i. boca wisteria
- j. mcinnery wisteria

*\*To use Maxwell Thomas® fabrics on brands other than Maxwell Thomas® furnishings, contact Direct Supply. Certain restrictions apply.*

*Fabrics shown may require moisture-barrier and antimicrobial treatments to hold up in Senior Living environments. Contact your account manager to learn more.*

# Woven Performance Fabrics

The look and feel of residential fabrics in a durable, woven design

Woven performance fabrics offer the durability and style you need to look great for the long haul in demanding Senior Living environments. Many of our fabrics feature moisture-barrier, stain-resistant and fire-safe options.

For easy reference, the following pages feature woven performance fabrics arranged by pattern type.



Maxwell Thomas® Avoca Occasional Chair #2MQ73 shown in floral envy cerise and mocha finish.

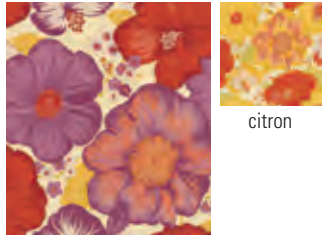
**Maxwell Thomas® Pasilla** \$\$\$\$



crimson

celestial

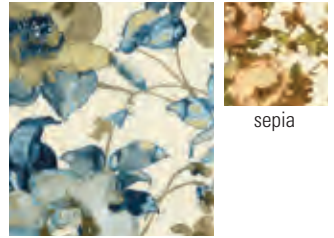
**Maxwell Thomas® Floral Envy** \$\$\$\$



cerise

citron

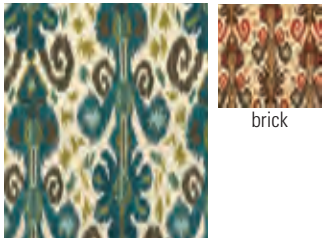
**Maxwell Thomas® Dahleigh** \$\$\$\$



perennial

sepia

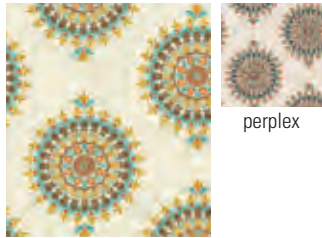
**Maxwell Thomas® Boudreaux** \$\$\$\$



boho

brick

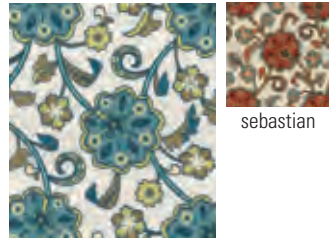
**Maxwell Thomas® Bostwick** \$\$\$\$



octavia

perplex

**Maxwell Thomas® Lavinia** \$\$\$\$



cerulean

sebastian

**Piatto** \$\$\$\$



cinnabar

midnight

endive

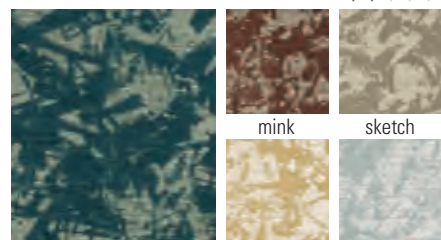
gold pearl

limestone

sea green

wheat

**Kismet** \$\$\$\$



ocean

latte

freeze

mink

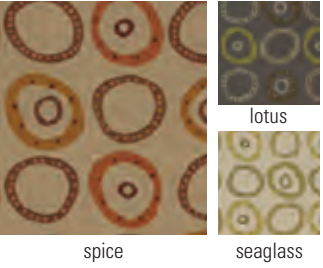
sketch

**Cayuga**



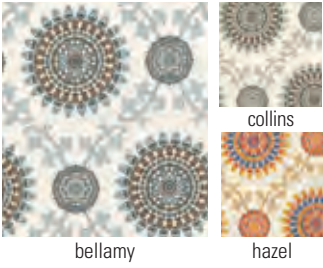
\$\$\$\$\$

**Button Up**

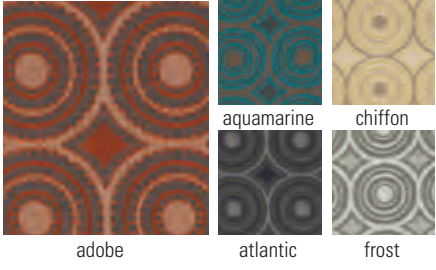


\$\$\$\$\$

**Maxwell Thomas® Wandering Grace** \$\$\$\$\$



**Opus**



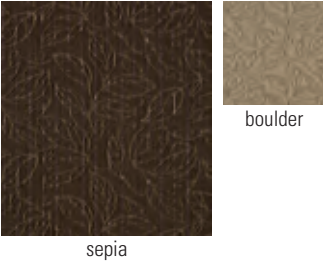
\$\$\$\$\$

**Tracery**



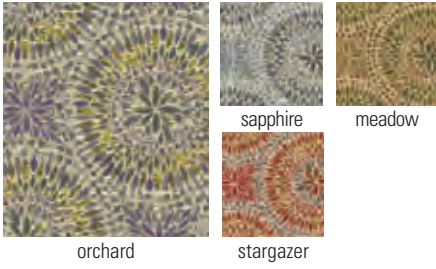
\$\$\$\$\$

**Underbrush**



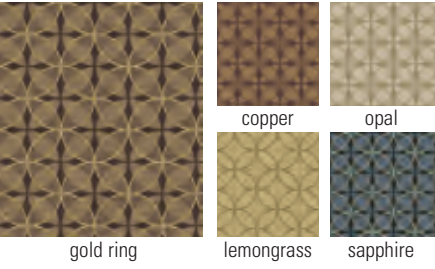
\$\$\$\$\$

**Maxwell Thomas® Truvvy**



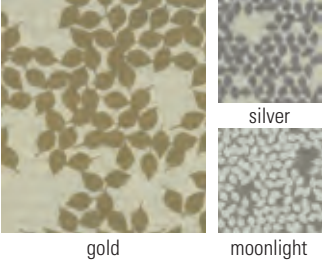
\$\$\$\$\$

**Clockwork**



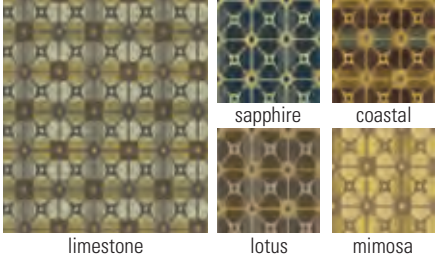
\$\$\$\$\$

**Dancing Leaves**



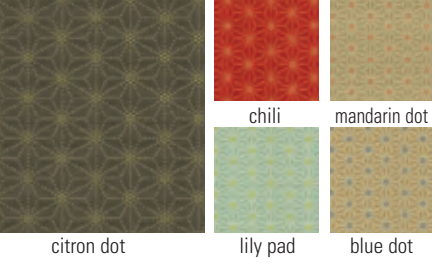
\$\$\$\$\$

**Gateway**



\$\$\$\$\$

**Japonica**



\$\$\$\$\$

**Melody**



\$\$\$\$\$

**Trilogy**



\$\$\$\$\$

**Alistair**



\$\$\$\$\$

**Sancho**



\$\$\$\$\$

Patterns are reduced to show the best view of each fabric. We have done our best to represent color accurately, but printing processes and lot selections vary. Please contact us for specific fabric samples for optimum pattern and color matching.

# Alluring designs elevate the look of your community

Our wide array of fabrics offers endless options! We can help you find the right pattern and colorway to fit your community's unique look.

**Jeanna Swiatkowski**

Interior Design Team Lead  
Direct Supply



Arlington Heights Loveseat #G1509 shown in wandering grace collins with mocha finish.

## Voyage

\$\$\$\$\$



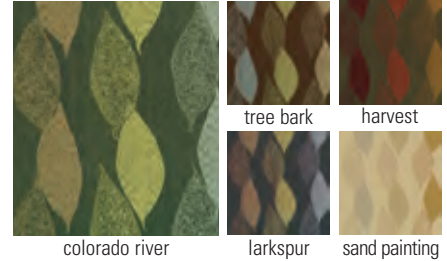
## Reed

\$\$\$\$\$



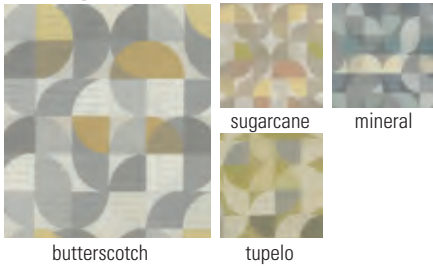
## Acacia

\$\$\$\$\$



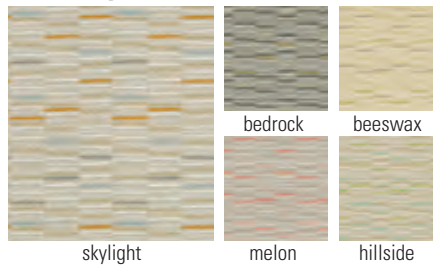
## Mix Up

\$\$\$\$\$



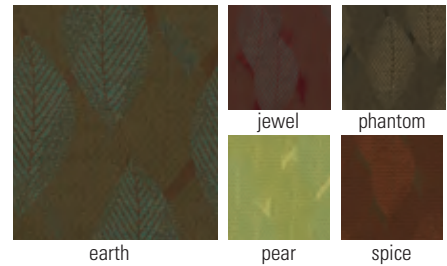
## Lined Up

\$\$\$\$\$



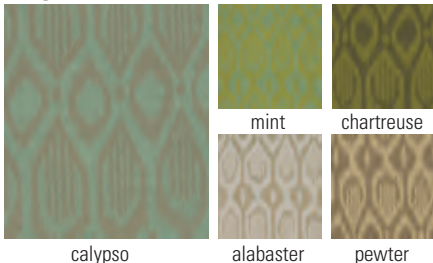
## Branch Out

\$\$\$\$\$



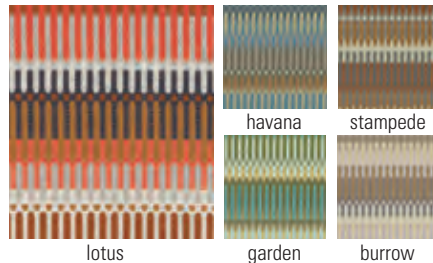
## Align

\$\$\$\$\$



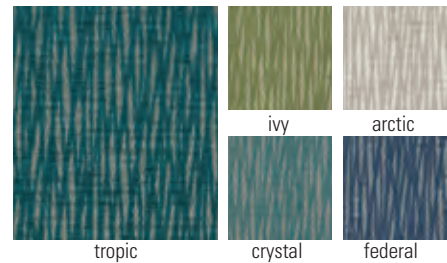
## Canteen

\$\$\$\$\$



## Beeline

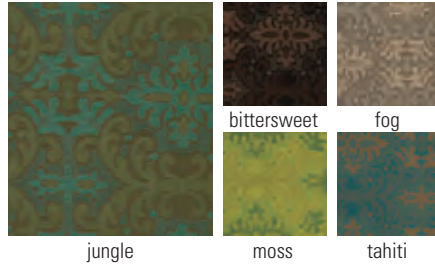
\$\$\$\$\$



**Bunta** \$\$\$\$



**Embellish** \$\$\$\$



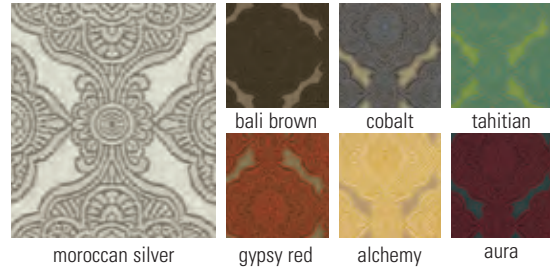
**Jaida** \$\$\$\$



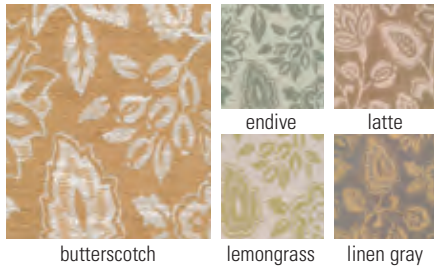
**Liliana** \$\$\$\$



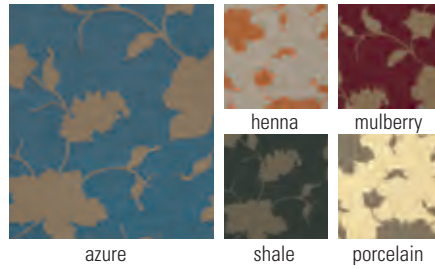
**Mandalay** \$\$\$\$



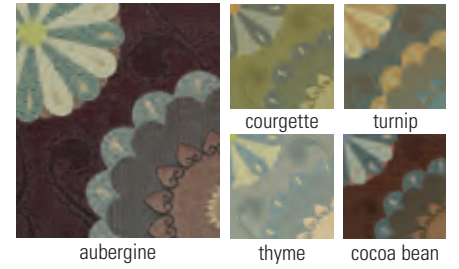
**Laila** \$\$\$\$



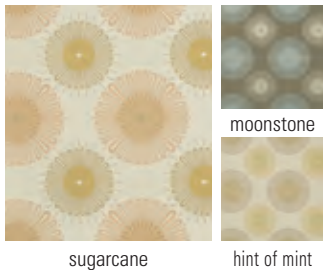
**Bloom** \$\$\$\$



**Cassava** \$\$\$\$



**Happy Hour** \$\$\$\$



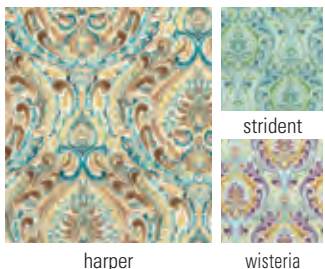
**Enroute** \$\$\$\$



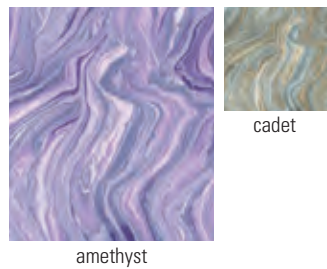
**Maxwell Thomas® Storybrooke** \$\$\$\$



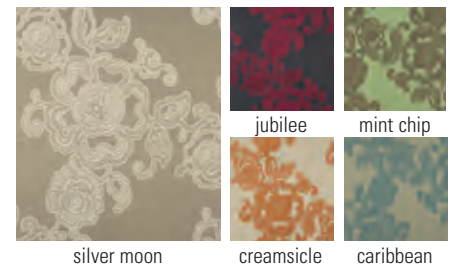
**Maxwell Thomas® Boca** \$\$\$\$



**Maxwell Thomas® Priux** \$\$\$\$



**Kindred** \$\$\$\$

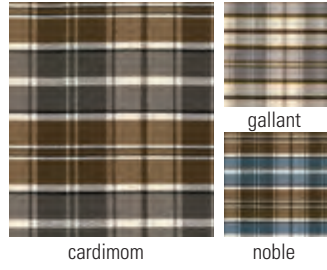


Patterns are reduced to show the best view of each fabric. We have done our best to represent color accurately, but printing processes and lot selections vary. Please contact us for specific fabric samples for optimum pattern and color matching.

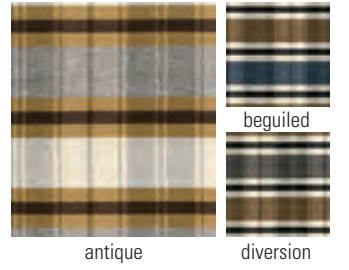


Maxwell Thomas® Odessa Lounge Chair #A2428 shown in gillingham beguiled and cognac finish.

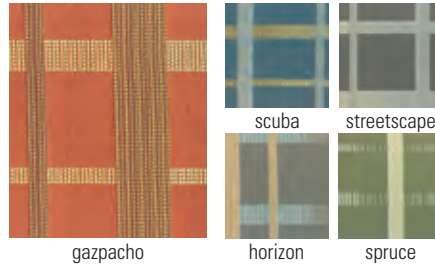
**Maxwell Thomas® Steele City** \$\$\$\$



**Maxwell Thomas® Gillingham** \$\$\$\$



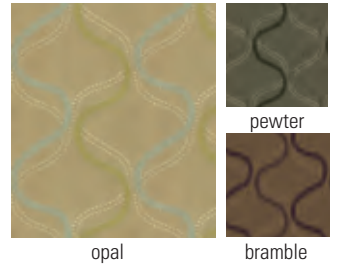
**Niles** \$\$\$\$



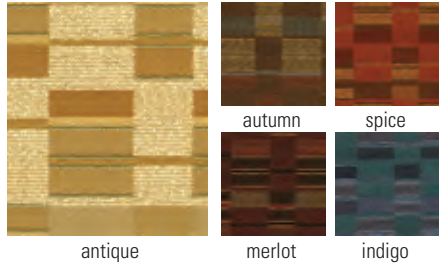
**Brandenburg** \$\$\$\$



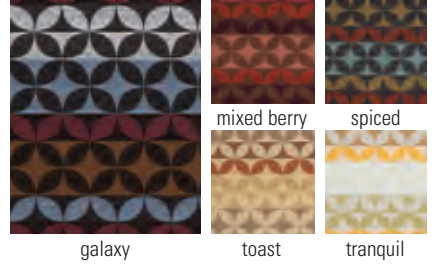
**Wishful** \$\$\$\$



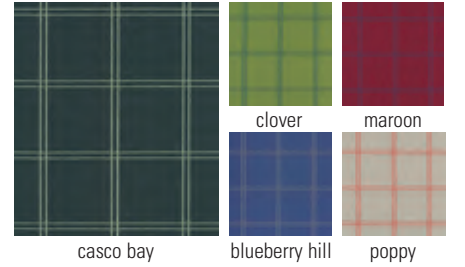
**Summit** \$\$\$\$



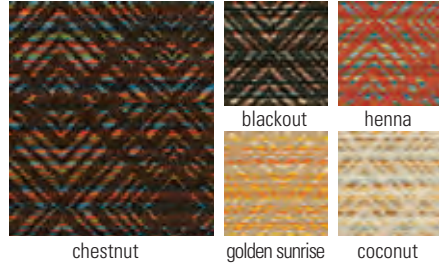
**Limelight** \$\$\$\$



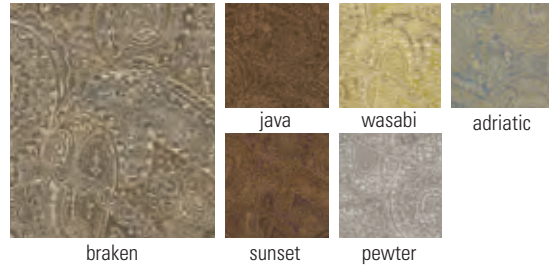
**Measure** \$\$\$\$



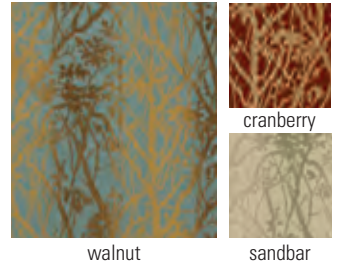
**Lattice** \$\$\$\$



**Kasan** \$\$\$\$

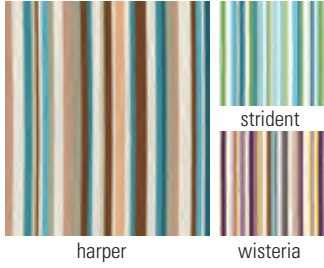


**Branch Vines** \$\$\$\$

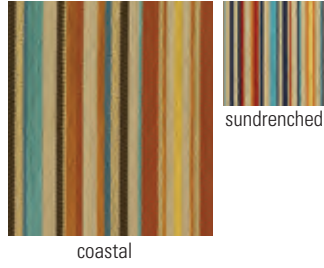




**Maxwell Thomas®  
McInnery** \$\$\$\$



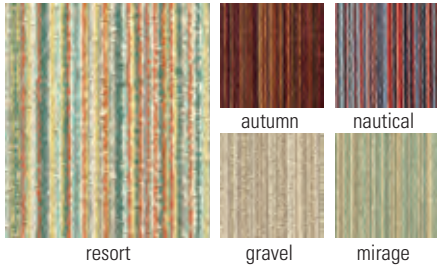
**Maxwell Thomas®  
Rinderle** \$\$\$\$



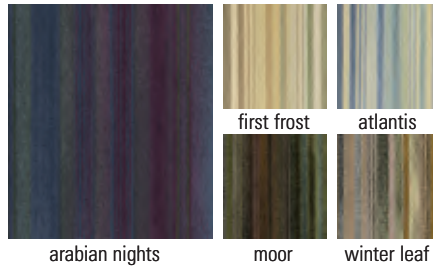
**Maxwell Thomas®  
Keup Trails** \$\$\$\$



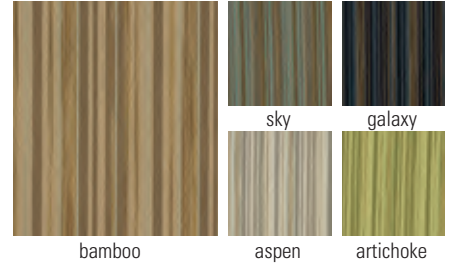
**Outline** \$\$\$\$



**Amuse** \$\$\$\$



**Hybrid** \$\$\$\$



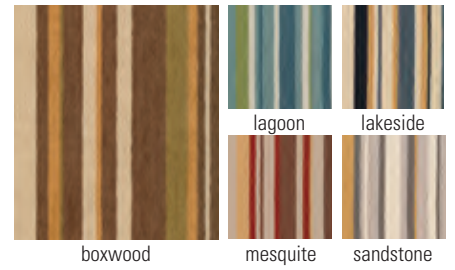
**Bravada** \$\$\$\$



**Villa** \$\$\$\$



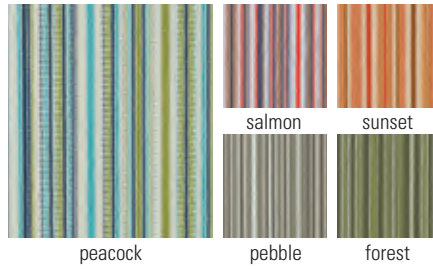
**Causeway** \$\$\$\$



**Pathway** \$\$\$\$



**Upstream** \$\$\$\$



**Guru** \$\$\$\$



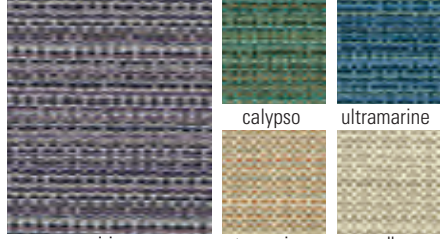
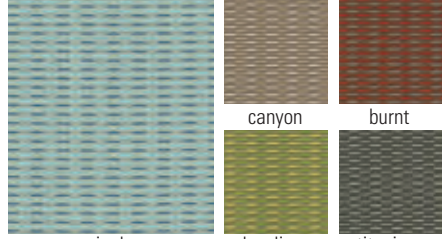
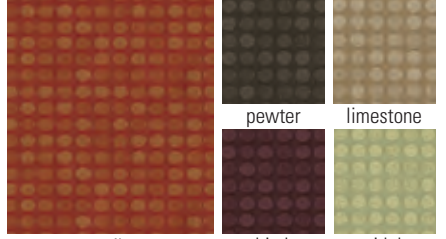
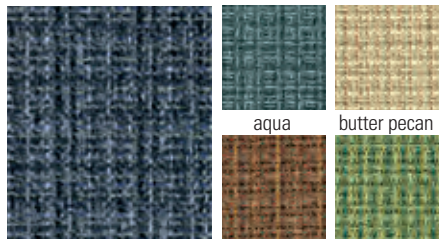

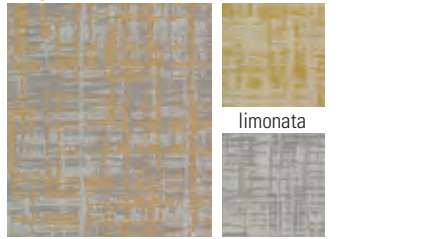
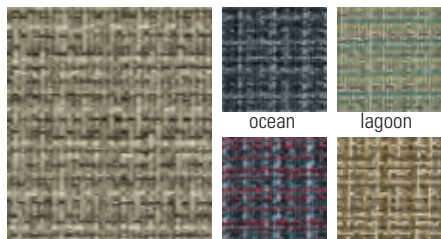
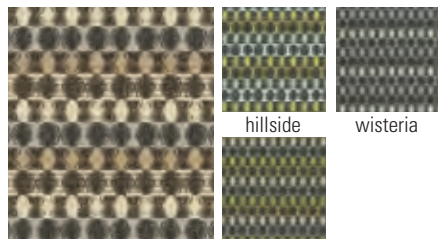
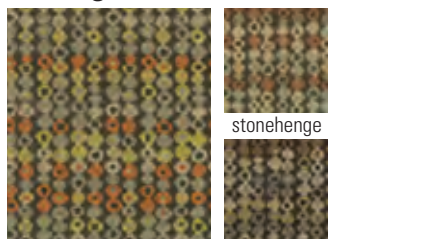
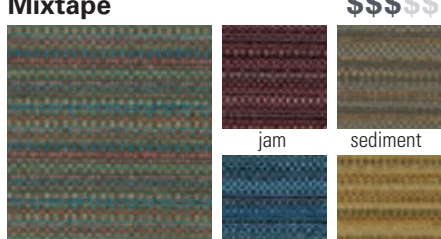



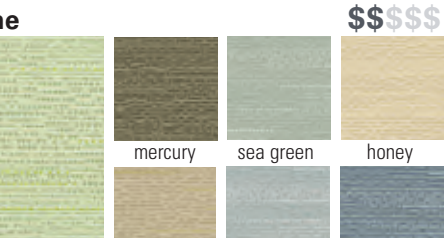

**Roadline** \$\$\$\$



Maxwell Thomas® Orovada Dining Chair #M2530 shown in mcinnery wisteria (back) and origin foil (seat) and driftwood finish.

Patterns are reduced to show the best view of each fabric. We have done our best to represent color accurately, but printing processes and lot selections vary. Please contact us for specific fabric samples for optimum pattern and color matching.

# Durable fabrics stand up to Senior Living environments

<p><b>Sync</b> \$\$\$\$</p>  <p>iris calypso ultramarine tangerine sandbar</p>	<p><b>Escape</b> \$\$\$\$</p>  <p>ripple canyon burnt key lime titanium</p>	<p><b>Activate</b> \$\$\$\$</p>  <p>paprika pewter limestone thistle tidal</p>
<p><b>Valet</b> \$\$\$\$</p>  <p>admiral aqua butter pecan argyle palmetto</p>	<p><b>Chapiteau</b> \$\$\$\$</p>  <p>flagstone peony fountain thatch cardinal</p>	<p><b>Dejo</b> \$\$\$\$</p>  <p>butterscotch limonata quartz</p>
<p><b>Portfolio</b> \$\$\$\$</p>  <p>archive ocean lagoon berry lumber</p>	<p><b>Role Model</b> \$\$\$\$</p>  <p>moonstone lotus hillside wisteria</p>	<p><b>Missing Link</b> \$\$\$\$</p>  <p>spellbound stonehenge birch</p>
<p><b>Mixtape</b> \$\$\$\$</p>  <p>mermaid jam sediment marina wheat</p>	<p><b>Ascot</b> \$\$\$\$</p>  <p>silverado natural cascade</p>	<p><b>Tiny Spaces</b> \$\$\$\$</p>  <p>peridot skybar walnut caramel cranberry granite</p>
<p><b>Little Boxes</b> \$\$\$\$</p>  <p>seaglass fusion spice</p>	<p><b>Waterline</b> \$\$\$\$</p>  <p>lilypad mercury sea green silver dune mineral satellite honey</p>	<p><b>Zahar</b> \$\$\$\$</p>  <p>ink shadow grotto</p>

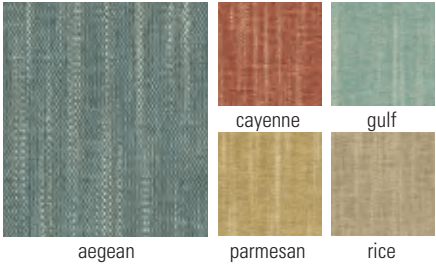
**Annex**

\$\$\$\$\$



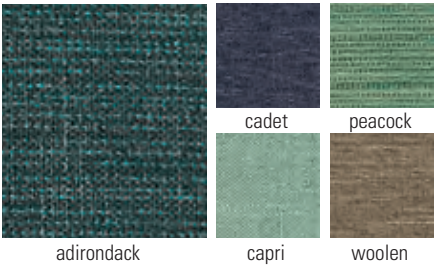
**Course**

\$\$\$\$\$



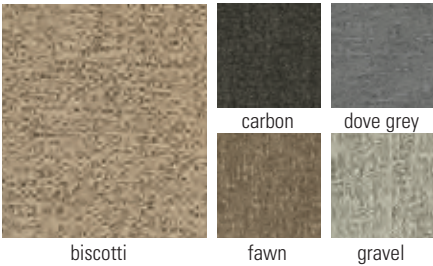
**Boutique**

\$\$\$\$\$



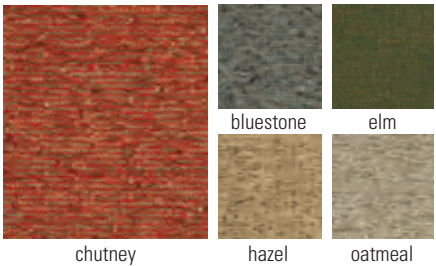
**Tagline**

\$\$\$\$\$



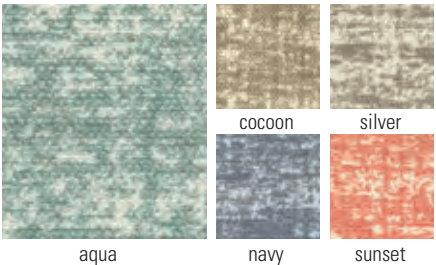
**Bungalow**

\$\$\$\$\$



**Essay**

\$\$\$\$\$



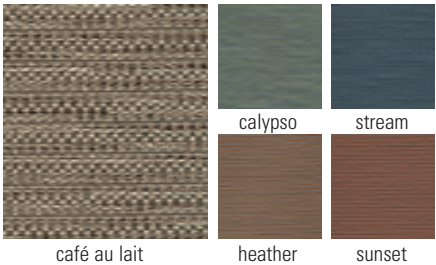
**Chalet**

\$\$\$\$\$



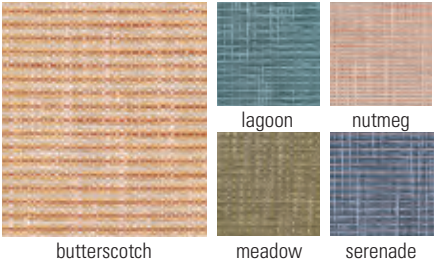
**Chorus**

\$\$\$\$\$



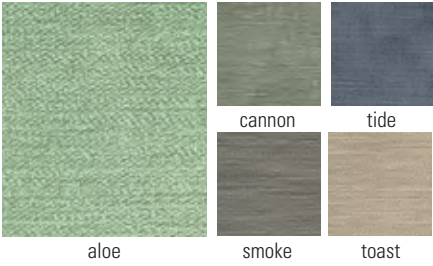
**River Park**

\$\$\$\$\$



**Cove**

\$\$\$\$\$



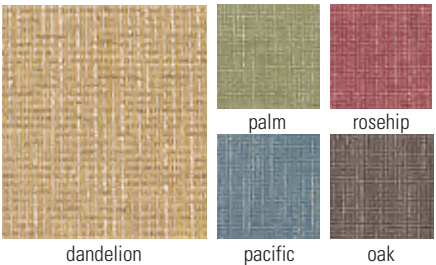
**Linen**

\$\$\$\$\$



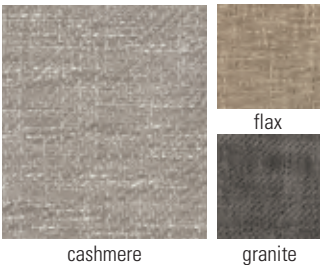
**Hashtag**

\$\$\$\$\$



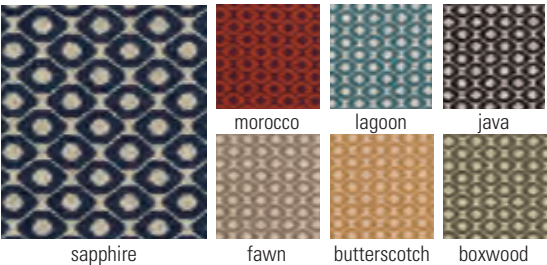
**Pika**

\$\$\$\$\$



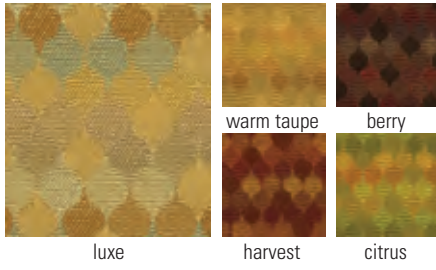
**Pave the Way**

\$\$\$\$\$

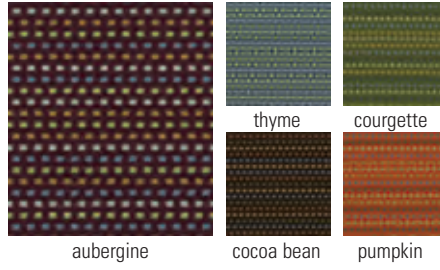


Patterns are reduced to show the best view of each fabric. We have done our best to represent color accurately, but printing processes and lot selections vary. Please contact us for specific fabric samples for optimum pattern and color matching.

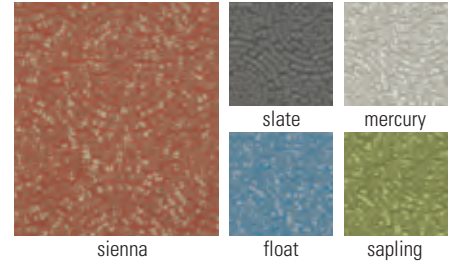
**Peak** \$\$\$\$



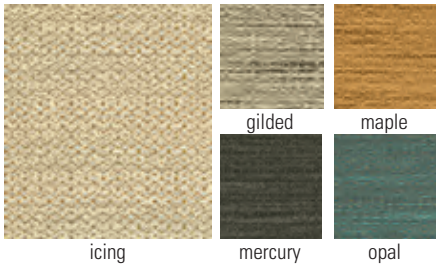
**Seed** \$\$\$\$



**Turnaround** \$\$\$\$



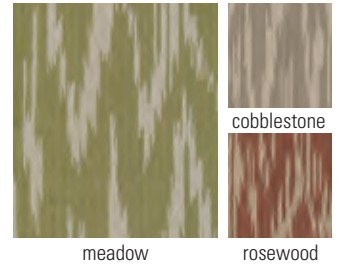
**Pigment** \$\$\$\$



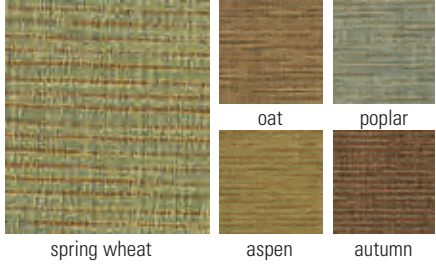
**Homestead** \$\$\$\$



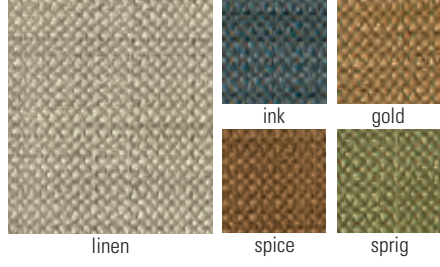
**Ikat Field** \$\$\$\$



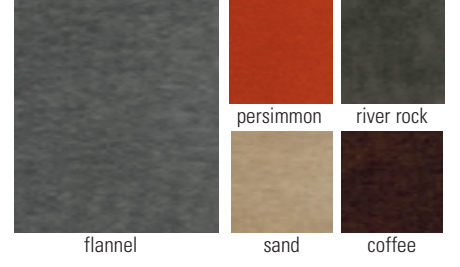
**Tumbleweed** \$\$\$\$



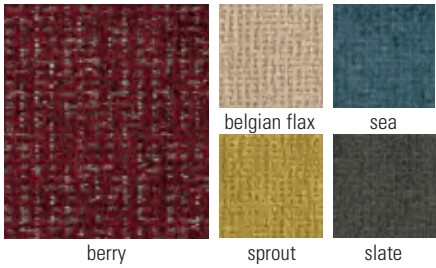
**Ultra Shade** \$\$\$\$



**Fuzzy** \$\$\$\$



**Big Texture** \$\$\$\$



**Milano** \$\$\$\$



**Gallant** \$\$\$\$



**Velour** \$\$\$\$



**Atoll** \$\$\$\$





# Need help coordinating your fabrics?

Whether you're adding to existing rooms or starting from scratch in new spaces, our expert design consultants can help.

Our team can help you create a unified and stylish look that fits your budget and helps increase your community's marketability. Some design services are even complimentary!

Contact us to get started or to request fabric and finish samples!

## Cloud Velvet

\$\$\$\$\$



dark horseradish

regal blue

dark papaya

## Mila

\$\$\$\$\$



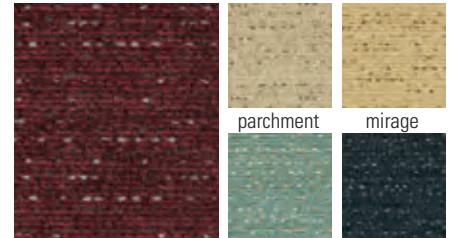
linen

sea coast

toffee

## Tabloid

\$\$\$\$\$



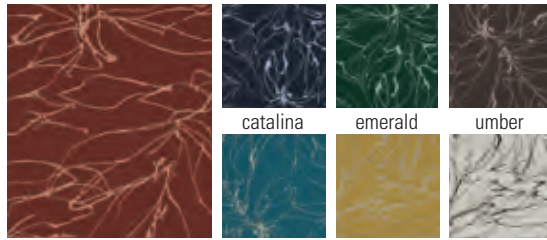
aubergine

cruise

baltic

## Meander

\$\$\$\$\$



carmine

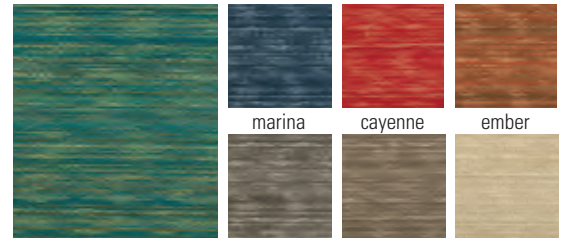
marine

maize

birch

## Amplify

\$\$\$\$\$



jungle

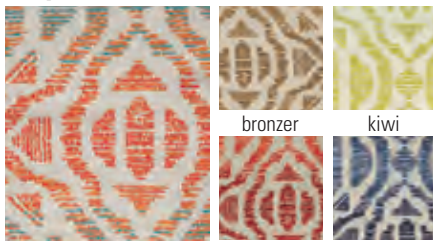
mercury

crimini

vanilla

## Playa

\$\$\$\$\$



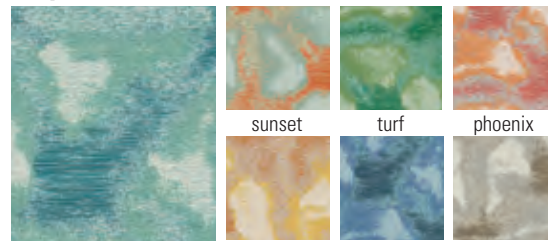
equinox

cherry

atlantic

## Abyss

\$\$\$\$\$



tidepool

sunray

raindrop

driftwood

## Brady

\$\$\$\$\$



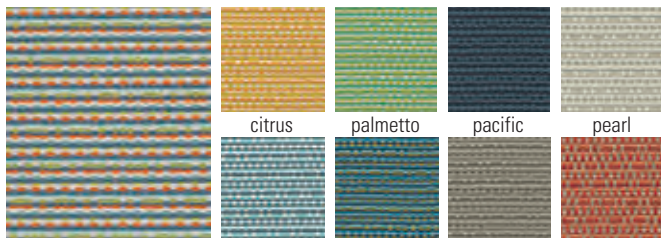
champagne

mushroom

spruce

## Knot

\$\$\$\$\$



cabana

float

equator

boardwalk

bonfire

citrus

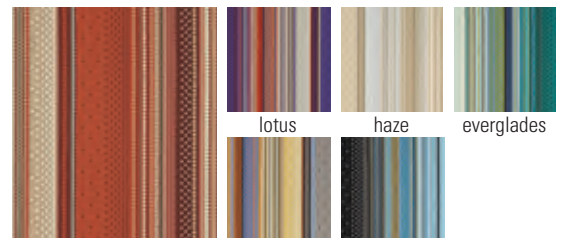
palmetto

pacific

pearl

## Riddle

\$\$\$\$\$



terra cotta

bistro

cosmos

lotus

haze

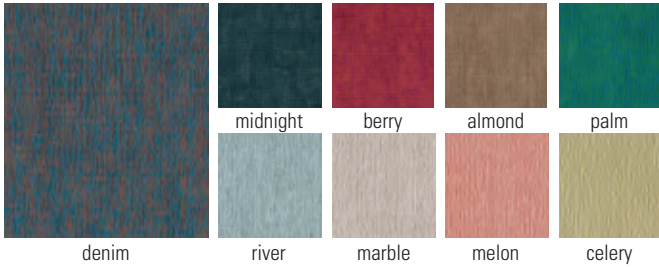
everglades

Patterns are reduced to show the best view of each fabric. We have done our best to represent color accurately, but printing processes and lot selections vary. Please contact us for specific fabric samples for optimum pattern and color matching.

# Find quality fabrics durable enough for Senior Living

## Schism

\$\$\$\$\$



## Split

\$\$\$\$\$



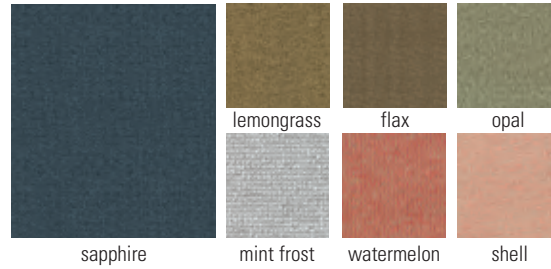
## Syllabus

\$\$\$\$\$



## Accolade

\$\$\$\$\$



## Portrait

\$\$\$\$\$



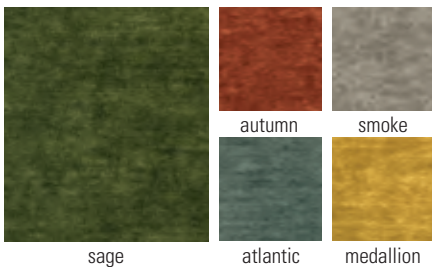
## Reserve

\$\$\$\$\$



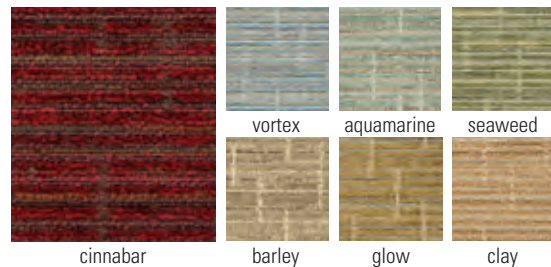
## Glamour

\$\$\$\$\$



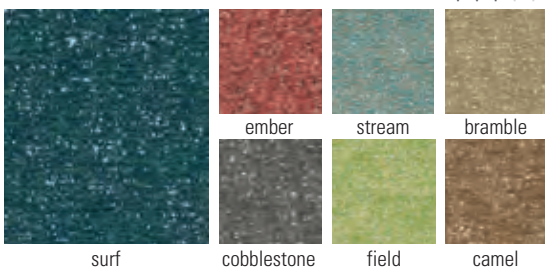
## Haiku

\$\$\$\$\$



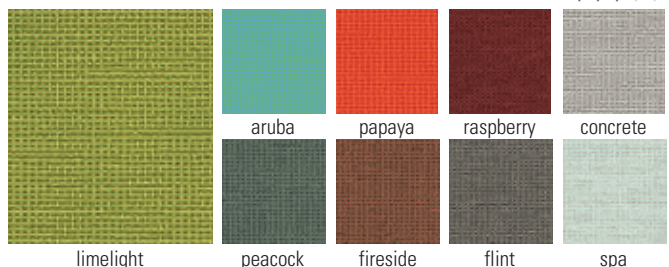
## Mantra

\$\$\$\$\$



## Beacon

\$\$\$\$\$

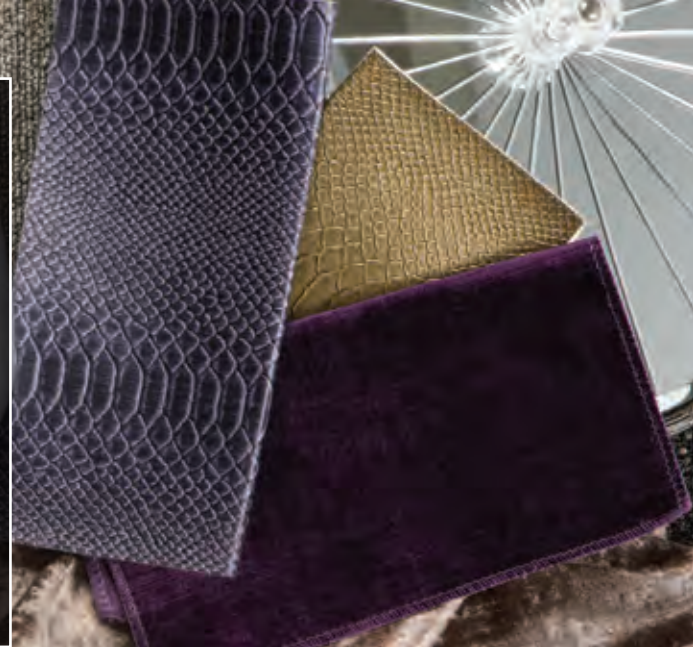


# Vinyl Fabrics

Easy-to-clean vinyl looks great for the long haul

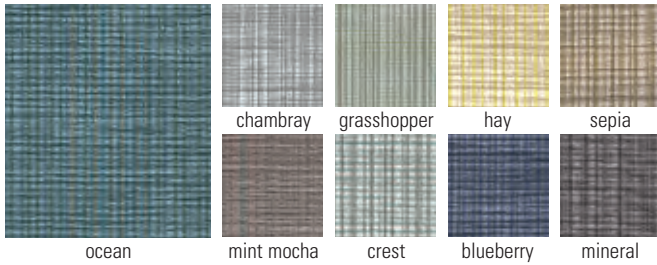
Vinyl offers supreme cleanability and durability for your demanding Senior Living environment. It's great for dining areas or any place where moisture or spills are particular concerns. Consider using vinyl for chair seats paired with a Woven Performance Fabric on backs for a high-style look that is functional, too.

For easy reference, the following pages feature vinyl arranged by pattern type.



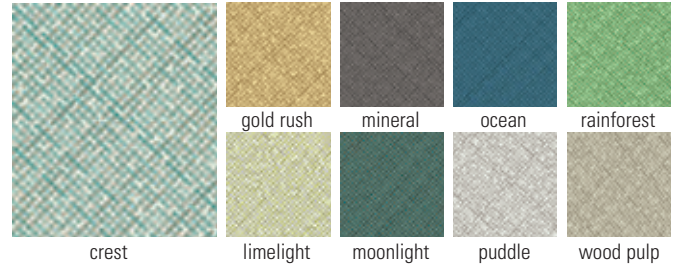
## Bilateral

\$\$\$\$\$



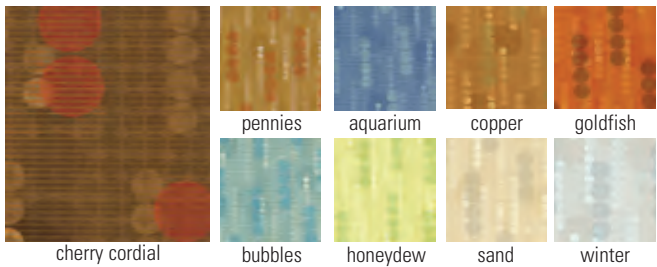
## Blitz

\$\$\$\$\$



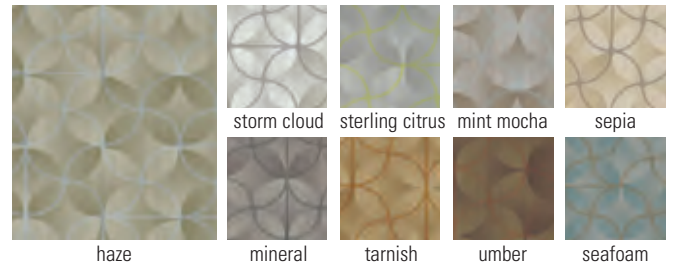
## Mirage

\$\$\$\$\$



## Bounce

\$\$\$\$\$



## San Remo

\$\$\$\$\$



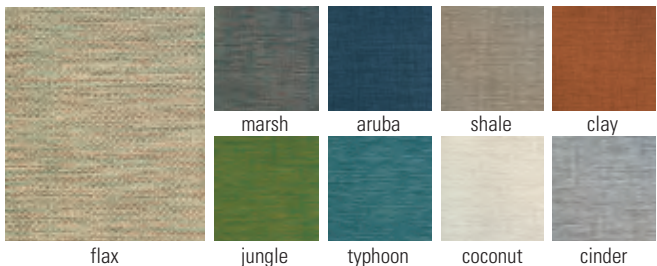
## Leafette

\$\$\$\$\$



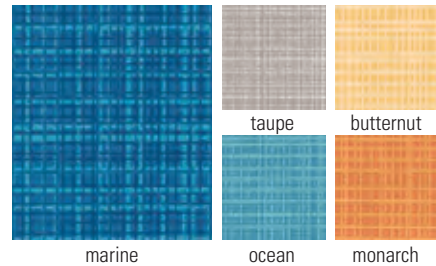
## Mimic

\$\$\$\$\$



## Foreshadow

\$\$\$\$\$



Patterns are reduced to show the best view of each fabric. We have done our best to represent color accurately, but printing processes and lot selections vary. Please contact us for specific fabric samples for optimum pattern and color matching.



Maxwell Thomas® Vidalia Glider #M3854 shown in 3953MG summer lighting (body) and boost startdust (seat).

**Annex**

\$\$\$\$\$



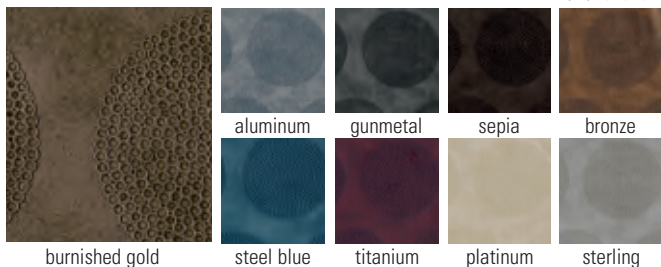
**Inside Edge**

\$\$\$\$\$



**Florin**

\$\$\$\$\$



**Alcazar**

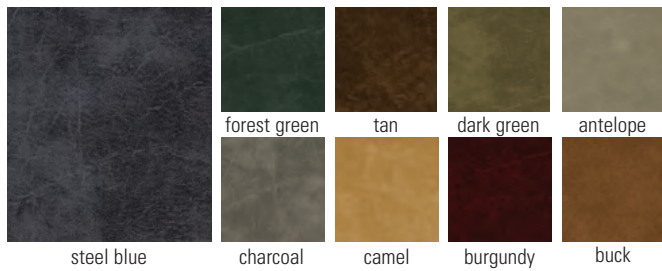
\$\$\$\$\$





**Carrara**

\$\$\$\$\$



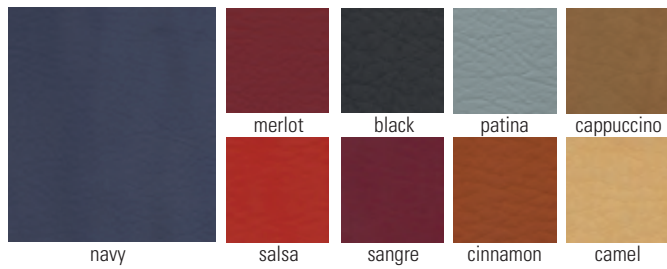
**Caslin**

\$\$\$\$\$



**Alias**

\$\$\$\$\$



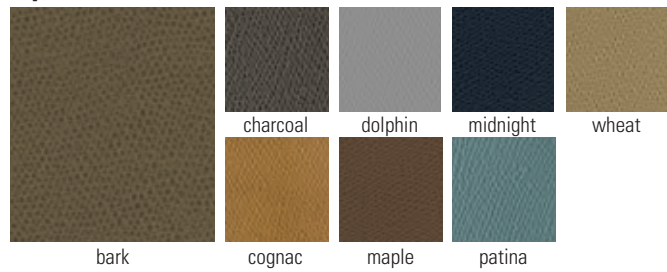
**Nexus**

\$\$\$\$\$



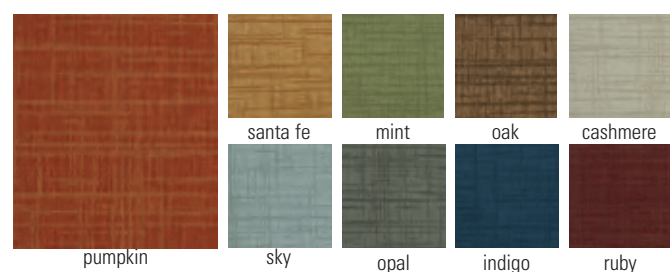
**Ophidian**

\$\$\$\$\$



**Crosshatch**

\$\$\$\$\$



**Spandau**

\$\$\$\$\$



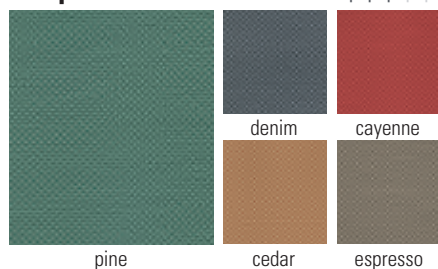
**Liberty**

\$\$\$\$\$



**Parquet**

\$\$\$\$\$




**Spur**

\$\$\$\$\$



Patterns are reduced to show the best view of each fabric. We have done our best to represent color accurately, but printing processes and lot selections vary. Please contact us for specific fabric samples for optimum pattern and color matching.

A Maxwell Thomas Batavia Lounge Chair is shown in a living room setting. The chair features a floral pattern with blue and yellow flowers on a light background. The seat is upholstered in a dark charcoal fabric, and the backrest is upholstered in a dark purple leather with a textured pattern. The chair has a mocha finish on the legs and a brass nailhead trim along the edges. To the left, a small gold side table holds a potted plant and a book titled "Boy in the Water". The background shows a window with orange curtains.

Maxwell Thomas® Batavia Lounge Chair  
#2MT59 shown in essence charcoal  
(seat), Nile Amethyst (outside  
back) and Dahleigh Perennial  
(inside back) with mocha finish.

Evans

\$\$\$\$



Vero

\$\$\$\$



Flash

\$\$\$\$



Vintage

\$\$\$\$



Soho

\$\$\$\$



Undercover

\$\$\$\$



Origin

\$\$\$\$



Assured

\$\$\$\$



Outback

\$\$\$\$



Mercury

\$\$\$\$



Patterns are reduced to show the best view of each fabric. We have done our best to represent color accurately, but printing processes and lot selections vary. Please contact us for specific fabric samples for optimum pattern and color matching.

# Finishing touches

Explore our vast selection to find the right finishes for your community. Find close matches between various manufacturers below or request custom finishes. We can match nearly any finish – just ask!

Please note that due to different manufacturing processes, the finishes shown below may not be exact but are close representations. **Call 1-800-634-7328 to request free finish samples to see your options firsthand.**

## Maxwell Thomas® Upholstered Furniture†

mahogany	mocha	corduroy	versailles anigre
walnut	wild cherry	oak	

## Maxwell Thomas® Wood Dining Chairs

aspenwood	mahogany	figured mahogany	corduroy	mocha
walnut	heritage walnut	versailles anigre	ashbury	candlelight
cranberry	hazelnut	verona	chestnut	terra cotta
wild cherry	oak	summer oak	teak	fusion maple

## Maxwell Thomas® Laminate Tabletops

black	cafelle	cocobala	sycamore	cocoa maple
williamsburg cherry	formal mahogany	hearth oak	montana walnut	mambo
windsor mahogany	select cherry	burnt ginger	natural tigris	fonthill pear
bannister oak	honey maple	kalahari topaz	tawny legacy	white tigris
natural nebula	natural birch	kensington maple	beigewood	

## Maxwell Thomas® Metal Dining Chairs

ravenwood	wisteria	driftwood	tawnywood
violine	palazzo	aubergine	

## Maxwell Thomas® Thermolaminate Tabletops

mocha	obsidian oak	caledonia truffle	walnut	shaker cherry
cherry mahogany	palos mahogany	flat iron	hayward cherry	solar oak

Maxwell Thomas 4-Leg Dining Tables with thermolaminate tops are not available in mocha finish.

## Maxwell Thomas® Maple Tabletops and Bases

black	obsidian oak	walnut	mocha	country
cherry	shaker cherry	palos mahogany	cherry mahogany	light cherry
hayward cherry	honey	solar oak	natural	

## Maxwell Thomas® Oak Table Bases

mahogany oak	sherwood oak	honey oak	natural oak
--------------	--------------	-----------	-------------

## Maxwell Thomas® Laminate and Thermolaminate Casegoods

obsidian oak	shaker cherry	walnut	cherry mahogany
palos mahogany	hayward cherry	solar oak	

## Maxwell Thomas® Occasional Tables

saroya	figured mahogany	briar	charcoal	carbon gray	sequoia
cypress	english oak	walnut	auckland	seely	scandinavian maple

## Maxwell Thomas® Veneer Casegoods

figured mahogany	charcoal	cypress	walnut	english oak	scandinavian maple
------------------	----------	---------	--------	-------------	--------------------

**Akin**

deep forest	cordovan	warm walnut	riverwood	harvest brown	planked elm
prairie gray	canyon oak	spiced cherry	millwork cherry	natural maple	

**Akin Laminate Dining Tabletops**

deep forest	figured mahogany	magnata	cordovan	warm walnut	bronze eclipse
montana walnut	warehouse oak	autumn harvest	spiced cherry	henna vesta	canyon passage
riverwood	woodlands	evening tigris	neowalnut	river cherry	millwork cherry
antique brush	uptown walnut	agatha suede	viola suede	veranda teak	natural tigris
kalahari topaz	quartered oak	new age oak	natural maple	beigewood	silver travertine
bainbrook gray	white tigris				

**Fairfield**

café mocha	manhattan	espresso	candlelight	sable
cherry	walnut	mahogany	tobacco	
cashew	rustic portobello	pecan	flint	

**Kellex**

dark chocolate	empire	coffee	mahogany	figured mahogany
montana walnut	nutwood	english chestnut	cherrywood	walnut
spice	oak	honey	fonthill pear	light oak
solar oak	kensington maple	new age oak	cream	

**H Contract**

java	plantation	espresso	bordeaux
villa brown	cherry	classic	farmtable
old world	truffle	parchment	

**Hekman**

black satin	chocolate	toffee	tobacco	classic cherry
halstead	caramel glaze	canterbury	medium oak	birmingham

**Holsag**

black	chateau	chocolate	mahogany	bordeaux
mocha	corduroy	truffle	heritage walnut	gingerbread
northwoods	ginger	toffee	pecan	terra cotta
oatmeal	oak	wild cherry	chestnut	walnut
cinnamon	coffee	champagne	teak	natural

**Leisters**

chocolate pear	cayenne maple	cocoa cherry	cherry blossom	tawny port
milk chocolate	cognac	hayward cherry	candlelight	hardrock maple

# Find on-trend quick-ship fabrics and finishes

Choose from new quick-ship fabric and finish options available on some of our top common area furniture! Select from any of the fabrics below to suit your unique style, or find quick-ship fabric schemes on [directsupply.net](http://directsupply.net). Quick-ship processing is available on up to eight qualifying pieces per brand, and furniture ships in just 15 business days or less!

**We have an extensive selection of fabrics and finishes to choose from. For standard lead time fabrics and finishes, see pages 28 - 43.**

## Crypton Fabrics



## Vinyl Fabrics

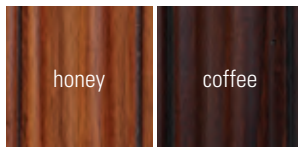


## Pillow Fabrics\*



*\*For M2523 only.*

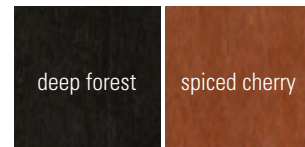
## Finishes for Kellex



## Finishes for Maxwell Thomas®



## Finishes for Akin



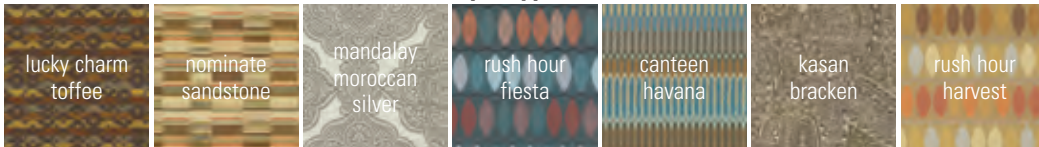
Add pizzazz to your quick-ship collection with new quick-ship pillows!  
**VISIT [DIRECTSUPPLY.NET](http://DIRECTSUPPLY.NET)**  
 to see the full selection.





Contact us today for free fabric samples!

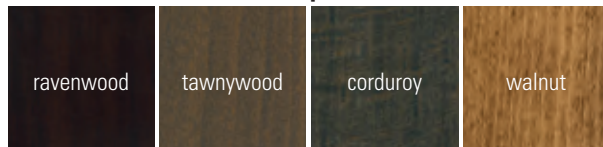
**Quick-Ship Crypton for Chair**



**Quick-Ship Vinyl for Chair Seat**



**Quick-Ship Finishes**



*Quick-ship Crypton must be used on the chair back and quick-ship vinyl must be used on the chair seat to accommodate quick-ship lead times.*

# TAKE THE GRAND TOUR

Experience your furnishings options firsthand when you visit our industry-leading, 15,000-square-foot Design Center. Located in Milwaukee, Wisconsin, Direct Supply's Design Center is constantly evolving to stay ahead of market trends and features the latest furnishings innovations – all catered specifically to Senior Living.



Get a sneak peek with our virtual tour.  
**Visit [directsupply.com/design-center](https://directsupply.com/design-center) today!**