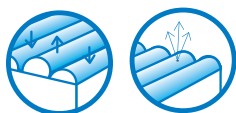


# Panacea® Air APL Mattresses



The Panacea® Air APL Mattress with alternating pressure and limited low air loss is designed to assist in the prevention and treatment of up to Stage IV pressure ulcers for Long Term Care residents. The resident support surface fits most standard healthcare beds and consists of 20 air cells that run laterally underneath the entire body. The air flotation system aids in pressure redistribution and relief, and helps maintain low interface pressures throughout the surface.

The Panacea Air APL Mattress uses a quiet, energy-efficient control unit, which provides alternating-pressure and limited low air loss therapy. The inflation levels are designed to maintain low interface pressures throughout the mattress, to redistribute peak interface pressures during the cycle and to further relieve peak pressure points as the cycle alternates. The low air loss feature helps reduce maceration and further skin breakdown by keeping the skin surface cool and dry.

	SIZE		CONFIGURATION
	Width	Length	Flat
PANACEA® AIR APL	35"	75"	#29115
		80"	#29116

See DirectSupply.net for bariatric sizes.

Specifications	
Standard Dimensions	35"W; 8"H; 75" or 80"L
Weight Capacity	450 lbs.
Therapy Style	Alternating Pressure, Limited Low Air Loss
Firm Perimeters	No
Raised Perimeters	No
Heel Slope	No
CPR Release	Yes
Safety Base†	Yes
Air Cell Height	6"
Inflation Time	Less than 45 minutes
Cover Type	4-way stretch
Limited Warranty	Mattress – 2 Years; Pump – 18 Months

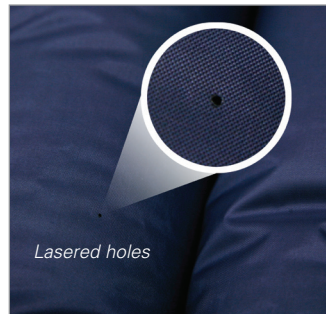
†Prevention against bottoming out during loss of power or air cell puncture

*These pressure redistribution support surfaces may be appropriate for use as part of an overall care plan to help prevent and treat decubitus ulcers. Resident-specific assessment could alter your particular usage of these mattresses.*



# Panacea® Air APL Mattresses

Alternating pressure with low air loss



## Indications For Use

The Panacea Air APL Mattress is a flotation therapy mattress that provides pressure management to assist in the prevention and treatment of up to Stage IV pressure ulcers. The alternating-pressure mode provided with the Panacea Air APL Mattress is indicated for use as a preventive tool against further complications associated with critically ill residents or immobility.

## Air Cells

Air cells provide A-B-A-B alternating-pressure therapy. These air cells inflate to height of 6". Specific cells are designed with holes which allow the Panacea Air APL Mattress to provide limited low air loss.

## Safety Air Base

A 2"H foam base helps ensure the resident is safe and comfortable in the event of a power failure.

## CPR Valve

Allows for rapid deflation and is located at the head end of the mattress. See directions for proper use.

## Cover

Top cover – the antimicrobial top fabric is fire resistant, fluid resistant, tear resistant and cleanable, and the two-way stretch cover is replaceable.

Bottom cover – PVC vinyl bottom for durability and easy cleaning.

## Mattress Height

The total pressure-management surface height is 8".

## Friction/Shear

The cover reduces both friction and shear.

## Replacement Mattress

The mattress should be placed directly on an existing healthcare bed frame of an appropriate size.

## Warranty

The mattress warranty is 2 years against manufacturing defects (see warranty for specific details). The control unit warranty is 12 months.

## Pressure Management

This replacement mattress system is designed to provide pressure management for the prevention and treatment of up to Stage IV pressure ulcers.

## CONTROL UNIT

### Power On/Off Button

Powers the control unit on and off.

### Firmness Dial

Adjusts the pressure within the system.

### Static button

Allows for the alternating-pressure functionality to be turned off.

### Low-Pressure Alarm

Indicates loss of air pressure.

### Alarm Silence button:

Silences the low-pressure alarm.

## OPERATING MODES

### Panacea Air APL — Alternating Pressure

Provides 10-minute loading and unloading cycle designed to maintain low interface pressures throughout the mattress to redistribute peak interface pressures during the cycle.

### Panacea Air APL — Low Air Loss

Efficient pump provides continuous 8 lpm airflow to help cool the skin surface. The non-quilted cover maximizes the system's benefits.



[DirectSupply.com](http://DirectSupply.com)

APTURA / EQUIPMENT & FURNISHINGS / DSSI / TELS