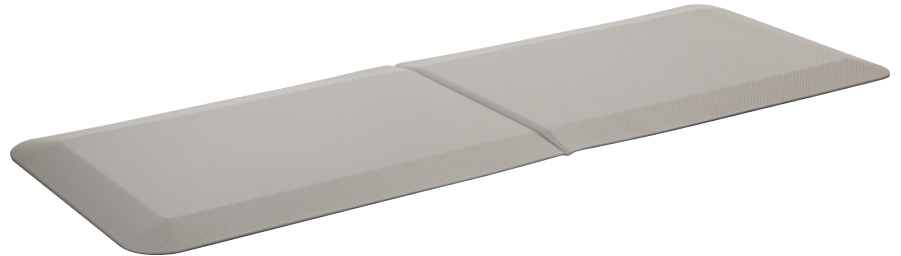




#84393



## Direct Choice™ Bedside Mat

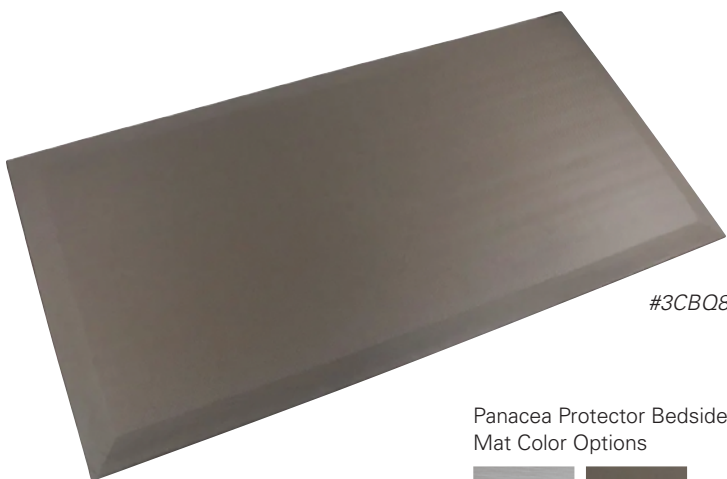
- Specially designed for easy cleaning
- High density foam helps absorb impact of a fall
- Bi-fold design allows for a more convenient storage solution when the mat is not in use
- 1-year limited warranty

Size	Color	Non-Fold	Bi-Fold
24"W x 66"L x 2"H	Gray	#84393	#84395
36"W x 66"L x 2"H	Gray	#F3489	#F3491

## Panacea® Foldable Bedside Mat

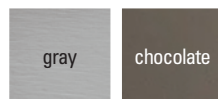
- Improve safety with fall protection when you need it and easy storage when you don't
- Ultra-low profile beveled edge and rounded corners help prevent tripping and enable casters to roll over with ease
- Fire-retardant, high-density polyurethane core with durable vinyl top cover and anti-slip bottom
- Reinforced vinyl has high tear resistance and strength for added durability
- 1-year limited warranty

Size	Color	Foldable
24"W x 70"L x 1 1/8"H	Gray	#G2095



#3CBQ8

Panacea Protector Bedside Mat Color Options



## Panacea® Protector™ Bedside Mat

- Padded beside fall mat provides impact protection with an ultra-low beveled edge
- Ultra-low profile beveled edge help prevent tripping and enable casters to roll over with ease
- Fire-retardant, high-density polyurethane core with durable vinyl top cover and anti-slip bottom
- Reinforced vinyl has high tear resistance and strength for added durability
- 1-year limited warranty

Size	Color	Non-Fold
24"W x 70"L x 1"H	Gray	#3CBQ4
	Chocolate	#3CBQ6
36"W x 70"L x 1"H	Gray	#3CBQ7
	Chocolate	#3CBQ8