



INSTRUCTIONS FOR USE:

When the dispenser is receiving power, the LED will flash GREEN and RED to let you know it is functioning. When in standby mode, the LED will flash GREEN every five seconds.

Open the front cover and press ON/OFF to turn the dispenser on or off. When ON, the LED will flash GREEN. When OFF, it will flash RED.

Press the  button. The LED will flash GREEN once to indicate that the signal was received. The dispenser will discharge one dose when you activate the sensor.

Press the  button. The LED will flash GREEN twice to indicate that the signal was received. The dispenser will discharge two doses when you activate the sensor.

When using the dispenser for the first time, activate the sensors underneath with your hand five to eight times. The liquid can then be discharged normally.

The dispenser will not work when the cover is open. Close the front cover after adjusting the liquid to the desired discharge amount.

LED INDICATOR

- 1. When the dispenser is powered on or the dose is adjusted, the LED will flash GREEN one or two times.
- 2. The LED will flash GREEN every five seconds when in standby mode.
- 3. The GREEN LED will light up when the dispenser discharges doses.
- 4. The LED will flash RED when the battery is low. The LED will flash RED and GREEN simultaneously when battery is very low.
- 5. The LED will flash GREEN and RED alternately when the dispenser senses issues, such as filter clogging, power exhaustion, no liquid, etc. Once the issue is resolved, power off and power back on the dispenser to reset.
- 6. The LED will flash GREEN continuously when there is an obstacle below the dispenser; remove the obstacle to resolve.

TROUBLESHOOT:

- 1a. Power (batteries)** – If using batteries, ensure batteries are inserted with the battery’s positive and negative end matching what is shown on the battery compartment. Verify that the LED turns green when powered and blinks green approximately every five seconds afterwards.
- 1b. Power (cord)** – If using AC cord, ensure it is plugged in all the way. Verify that the LED turns green when powered and blinks green every five seconds afterwards.
- 1c. On/Off button** – Turn the device on and off by pressing the ON/OFF button inside the device. Verify that the LED turns green when powered and blinks green every five seconds afterwards.


- 2. Tank** – Verify that the tank is in the correct position shown in the installation notes.
- Note:** The orange U-shaped arm should be below the pump head with the nozzle going through it.
- 3. Flow** – Disassemble the tank and inspect the nozzle. If there are any blockages or air bubbles, empty the tank and flush under water until the soap or sanitizer can flow freely through it again. Fill the tank with water and raise and lower the nozzle to confirm water can flow through it when lifted and stops when lowered. Reassemble the tank and correctly place back into the dispenser.


CLEANING OR REPLACING THE FILTER


Clean or replace the filter under the following circumstances:


- 1. No foam/liquid or too little foam/liquid will dispense.
- 2. Dispenser has not been used for a week or more.
- 3. The dispenser has been used for more than three months.
- 4. The LED flashes RED and GREEN continuously, indicating the filter may be blocked.


CAUTION


 Do not place dispenser in continuous direct sunlight, as that may cause deformation and deterioration of the product.


 Do not apply excessive force, drop or hit the dispenser.

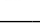
 Remove batteries and liquid when dispenser is not in use for an extended period of time.

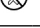
 Clean dispenser regularly for best performance.

 Do not rinse or expose the dispenser to moisture or water.

 Do not use strong corrosive chemical solvents to clean the dispenser, as they will damage and deform the surface.

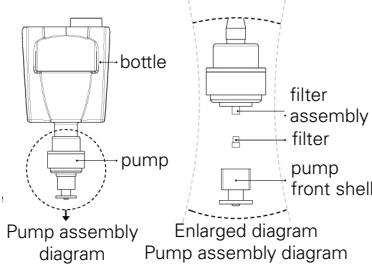
 Do not allow dust or dirt to enter the soap bottle; it may block the pump. If you find that the inside of the bottle is dirty, replace the soap solution and clean the pump.

 Never dismantle, repair or modify without first contacting customer service.

 Keep away from fire hazards.

FILTER DISASSEMBLY STEPS

- 1. Remove the bottle.
- 2. Pull out the front housing of the pump.
- 3. Remove the filter with your hands, tweezers or other tools.
- 4. Clean the dirt remaining on the ends of the filter and reassemble the parts in the original order.
- 5. Close the front housing.



WARRANTY INSTRUCTIONS

The manufacturer ensures all products shipped from its factory meet pertinent safety standards, technical requirements and proper functionality under normal use and maintenance.

Within one year from the date of purchase, if the dispenser fails due to a manufacturing process or materials, you will receive a free repair or replacement.

Damage caused by the following situations voids this warranty:

- Improper product use or incorrect installation
- Unauthorized modifications
- Natural or man-made disasters



Distributed by Direct Supply Manufacturing, Inc. 6635 W Champions Way, Milwaukee, WI 53223.

© 2021 Direct Supply Manufacturing, Inc. All Rights Reserved. Direct Supply® and all associated logos are the registered trademarks of Direct Supply, Inc., used under license.

Date of Printing: March 2021 16594

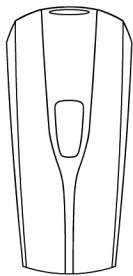
Direct Supply®
TOUCHLESS HAND
SANITIZER DISPENSER

Owner’s Manual

Thank you for purchasing a Direct Supply® Touchless Hand Sanitizer Dispenser from Direct Supply Equipment & Furnishings®. Please read this entire guide carefully and keep it for future reference. This guide will provide you with instructions, warnings, warranty information and other important information about your Direct Supply® Touchless Hand Sanitizer Dispenser. Share this information with your nursing, housekeeping and maintenance staff to help ensure the Touchless Hand Sanitizer Dispenser is cared for properly. Please keep and refer to this owner’s manual.

1-800-634-7328 DirectSupply.com

Thank you for choosing this dispenser.

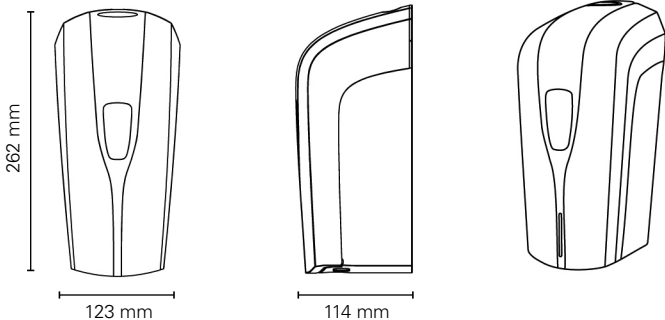


Model: USD-02A

Dispensing: Gel/Liquid



PRODUCT SIZE:



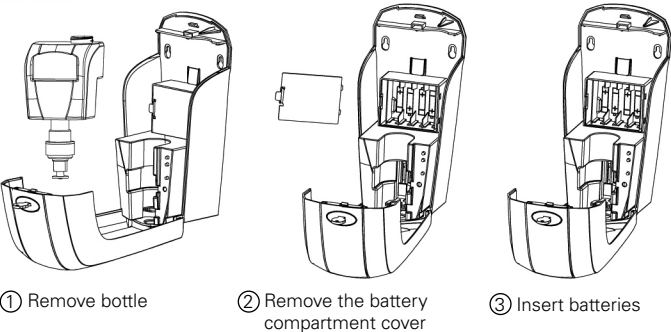
SPECIFICATIONS:

Specifications for gel/liquid dispenser (USD-02A):

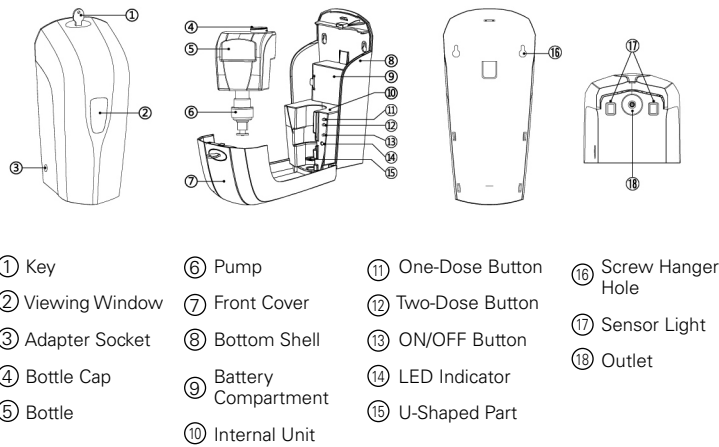
NAME:	Touchless Hand Sanitizer Dispenser
MODEL:	USD-02A
INDUCTION WAY:	Infrared Reflection
INDUCTION DISTANCE:	Shortest = 3 cm; Longest = 10 ± 2 cm
MATERIAL:	ABS, PP
CAPACITY:	1,000 mL
REFILLABLE LIQUID:	Liquid gels, such as shampoo, shower gel, hand soap, etc.
DISPENSING:	Gel/Liquid
DOSE:	💧: 0.8 mL 💧💧: 1.6 mL
BATTERY:	4 or 8 AA alkaline batteries
POWER ADAPTER:	Input Voltage = AC100~240V; 50/60 Hz Output Voltage = DC 6.0V 2A (optional, not included)

BATTERY INSTALLATION:

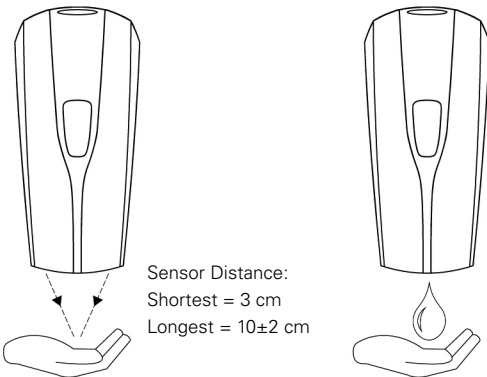
Remove the bottle, open battery compartment, and insert four (4) or eight (8) AA alkaline batteries. If using four AA batteries, place one in each column with the battery's positive and negative end matching what is shown on the battery compartment.



COMPONENT DESCRIPTION:

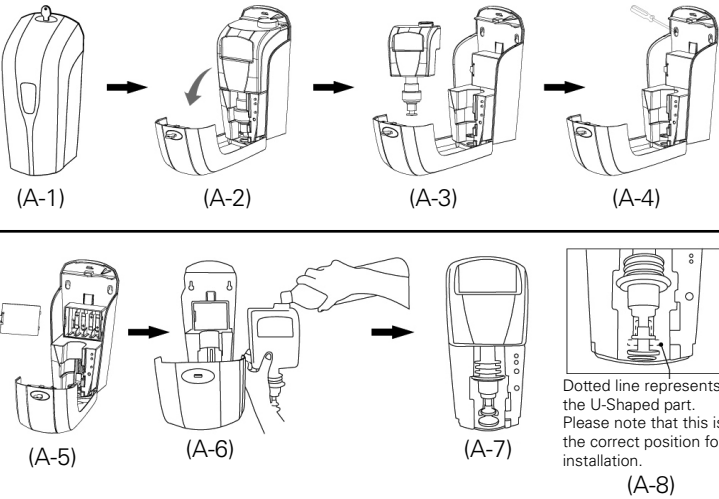


USAGE EXAMPLE:



INSTALLATION NOTES:

When installing, allow at least 30 cm of clearance below the unit. Choose a suitable place to install the dispenser that prevents the unit from getting wet and provides easy access to users.



- (A-1) Insert the key into the corresponding key hole in the dispenser.
- (A-2) Press down on key hole and swing cover down.
- (A-3) Remove bottle.
- (A-4) Using the screw hole positions in the back plate as a guide, use a pen or pencil to mark where the screws will go. Affix screws and then hang the dispenser.
- (A-5) Open the battery compartment cover and properly insert four (4) or eight (8) AA alkaline batteries. If using four AA batteries, place one in each column with the battery's positive and negative end matching what is shown on the battery compartment.
- (A-6) Pour liquid into the bottle (must remove bottle to add liquid).
- (A-7) Place the bottle into the dispenser vertically.
- (A-8) Place the pump head above the U-shaped arm with the nozzle through it.