



Direct Supply® Panacea®

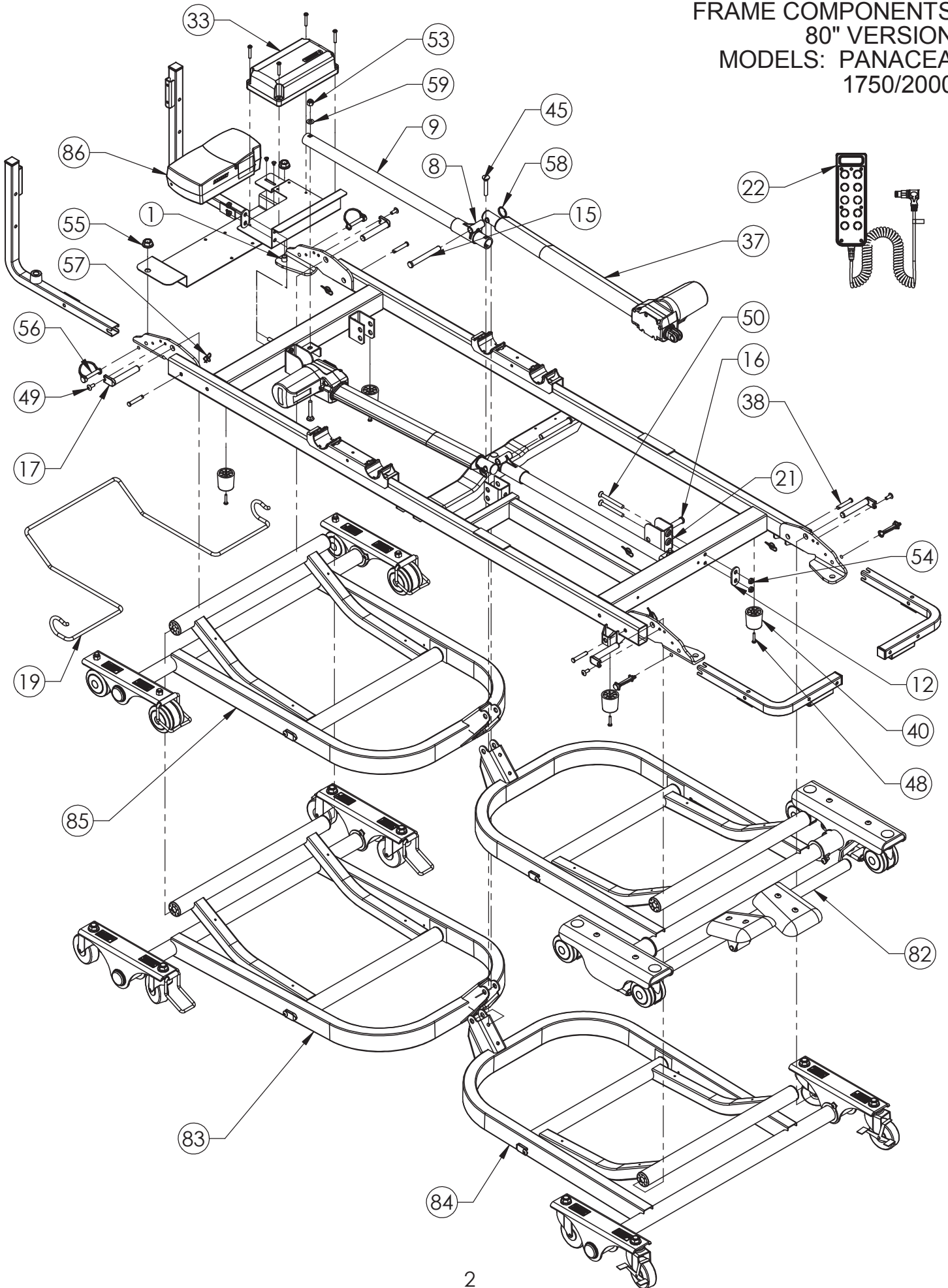
1750/2000 Adjustable-Height Low Bed

Parts List

Thank you for purchasing a Direct Supply® Panacea® 1750/2000 Adjustable-Height Low Bed from Direct Supply Equipment & Furnishings®. Please read this entire parts list carefully and keep it for future reference. If your bed arrives with missing or damaged parts, or if you have any questions about the bed you have purchased, please contact **Direct Supply Equipment & Furnishings** at 1-800-634-7328, 6767 North Industrial Road, Milwaukee, WI 53223, deardirect@directsupply.net. Share this information with your housekeeping, nursing and maintenance staff to help ensure the bed is cared for properly.

Please keep and refer to this Parts List.

FRAME COMPONENTS
80" VERSION
MODELS: PANACEA
1750/2000



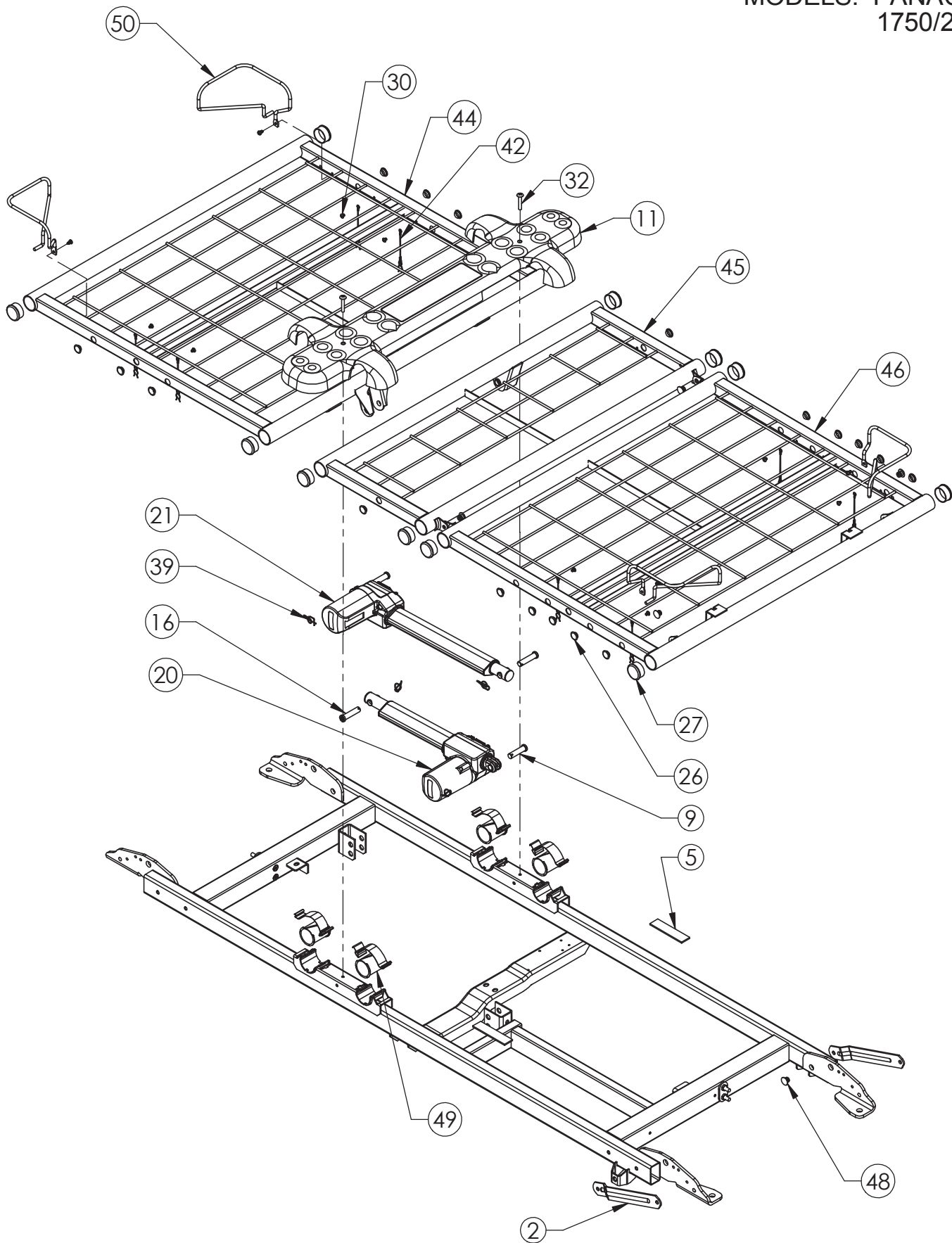
FRAME COMPONENTS
80" VERSION
MODELS: PANACEA
1750/2000

ITEM NO.	PART NUMBER	DESCRIPTION
1	600-1574	BOLT,HEX,STL,1/2-13x3/4
NS	6110157	MANUAL, USER, PANACEA 1750/2000
8	11011271	GLIDE, HIGH-LOW
9	11011283	TUBE, HIGH-LOW GUIDE
12	11011345	PLATE, PIVOT SHAFT HEAD
15	11011732	PIVOT PIN, LEG/ACTUATOR
NS	11011886	WIREFORM, BUMPER, 80"
16	11012238	PIN, SLEEP SURFACE PIVOT
17	11012662	PIN, STABILIZER PIVOT
19	11012608	WIREFORM,BUMPER, TRT, TRAPEZE
21	11013254	BRACKET, HI-LOW (RAAH)
22	11014664	PENDANT, TIMOTION
33	11014711	BATTERY, TIMOTION
37	11014736	ACTUATOR, HI-LO, TIMOTION
38	11014747	PIN, PANEL MOUNTING
40	12453707	BUMPER, STOP, 1.62
45	12523159	BOLT, CARRIAGE 5/16-18 X 2
48	12551030	SCREW, #10-24 x L PPHTFS,
49	12552592	SCREW, 1/4-20 X 5/8, TTHTFS,ZC
50	12583163	5/16-18 x 2.75" FLAT HD MACH SCREW ZC
53	12673105	NUT, LOCK 5/16-18 X .430-.450HI
54	12673107	5/16-18 NTE JAM LOCK NUT
55	12675024	NUT, 1/2-13, WHIZ LOCK, ZINC
56	12793116	PIN, SAFETY, 5/16 IN X 2 IN, ROUND
57	12800032	RING, RUE
58	12809807	RING, KICKOUT
59	12847531	WASHER, .688 X .344 X .065
82	31009257	ASSY,LEG
83	31009258	ASM., HI-LOW LEG
84	31009259	ASM.,LEG, MOBILITY
85	31009261	ASSY, LEG WITH CASTER
86	31009266	CONTROL BOX, TIMOTION

NOTE: ADD "AL" SUFFIX TO PART NUMBERS FOR SOFT TONE PAINTED PARTS

NOTE: GROUND WIRES AND ATTACHING HARDWARE ARE NOT SHOWN - REFER TO LENGTH OF WIRE ASSEMBLIES ON BED IF REPLACEMENT IS REQUIRED

MATTRESS SUPPORT
35" FIXED WIDTH
80" VERSION
MODELS: PANACEA
1750/2000

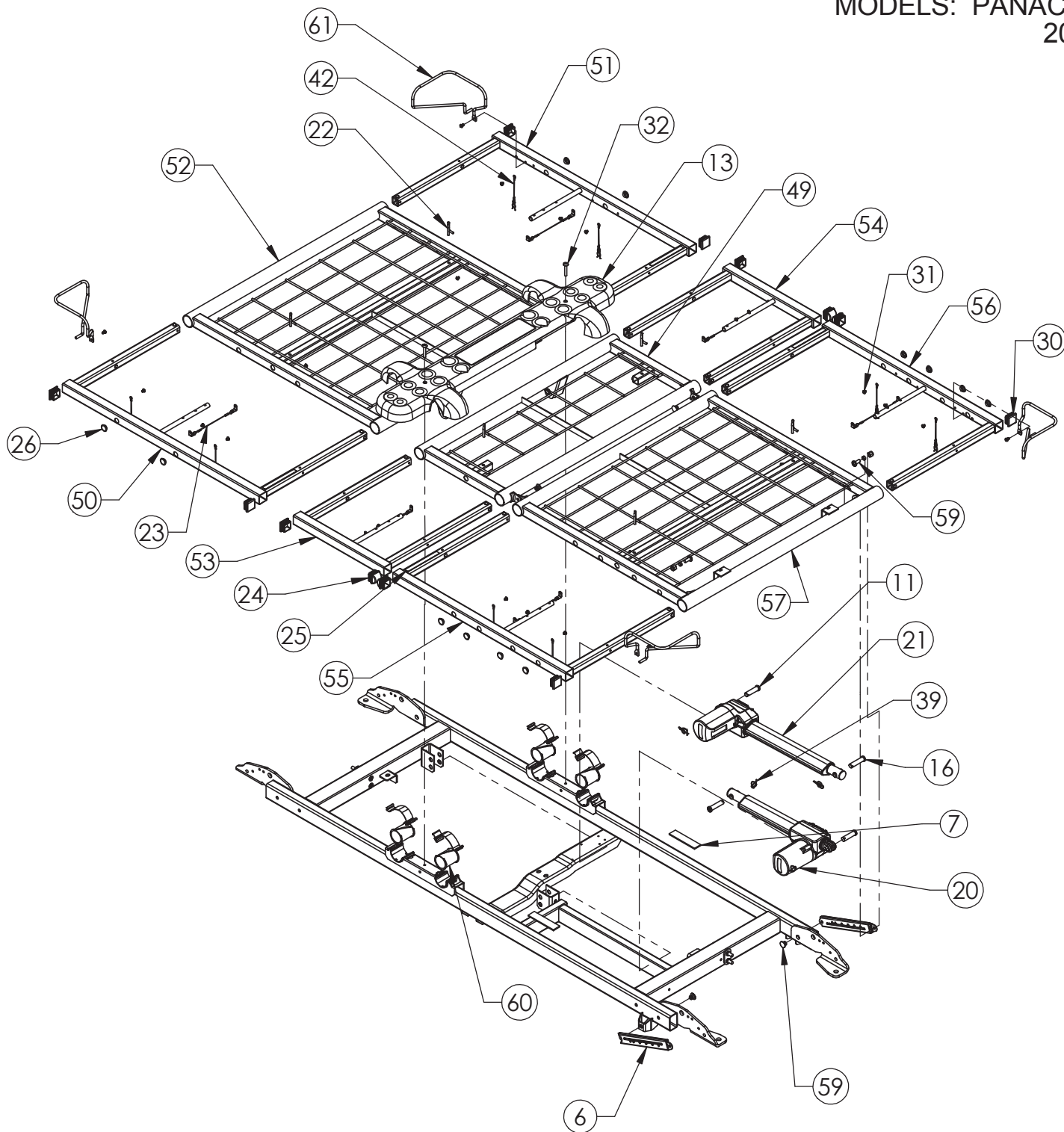


MATTRESS SUPPORT
35" FIXED WIDTH
80" VERSION
MODELS: PANACEA
1750

ITEM NO.	PART NUMBER	DESCRIPTION
2	11010381	LEVELER, LEG
5	11011331	PAD, STOP, KNEE/LEG
9	11012238	PIN, SLEEP SURFACE PIVOT
11	11012839	PAN, SEAT,STRUCTURAL
16	11014113	PIN, CLEVIS, 12mm x 1.8"
20	11014658	ACTUATOR, BACK
21	11014659	ACTUATOR, KNEE
26	12470058	CAP, PLUG, 5/8", BLACK
27	12470474	CAP, TUBE, 1.5" DIA
30	12551015	SCREW-#10-32 X .25
32	12552590	SCREW,1/4X-20 X 1 1/2, TTHTF
39	12800032	RING, RUE
42	24005271	CLIP ASM
44	24006336	WLDT, 80" BACK SECTION
45	24006338	WLDT., KNEE SECTION
46	24006339	WLDT., FOOT SECTION
48	39000052	KIT, RIVET REPLACEMENT
49	39000802	KIT, MATTRESS DECK BEARING
50	39001317	KIT, SET, MATTRESS RETAINER

NOTE: ADD "AL" SUFFIX TO PART NUMBERS FOR SOFT TONE PAINTED PARTS

MATTRESS SUPPORT
 INTEGRATED WIDTH
 80" VERSION
 MODELS: PANACEA
 2000

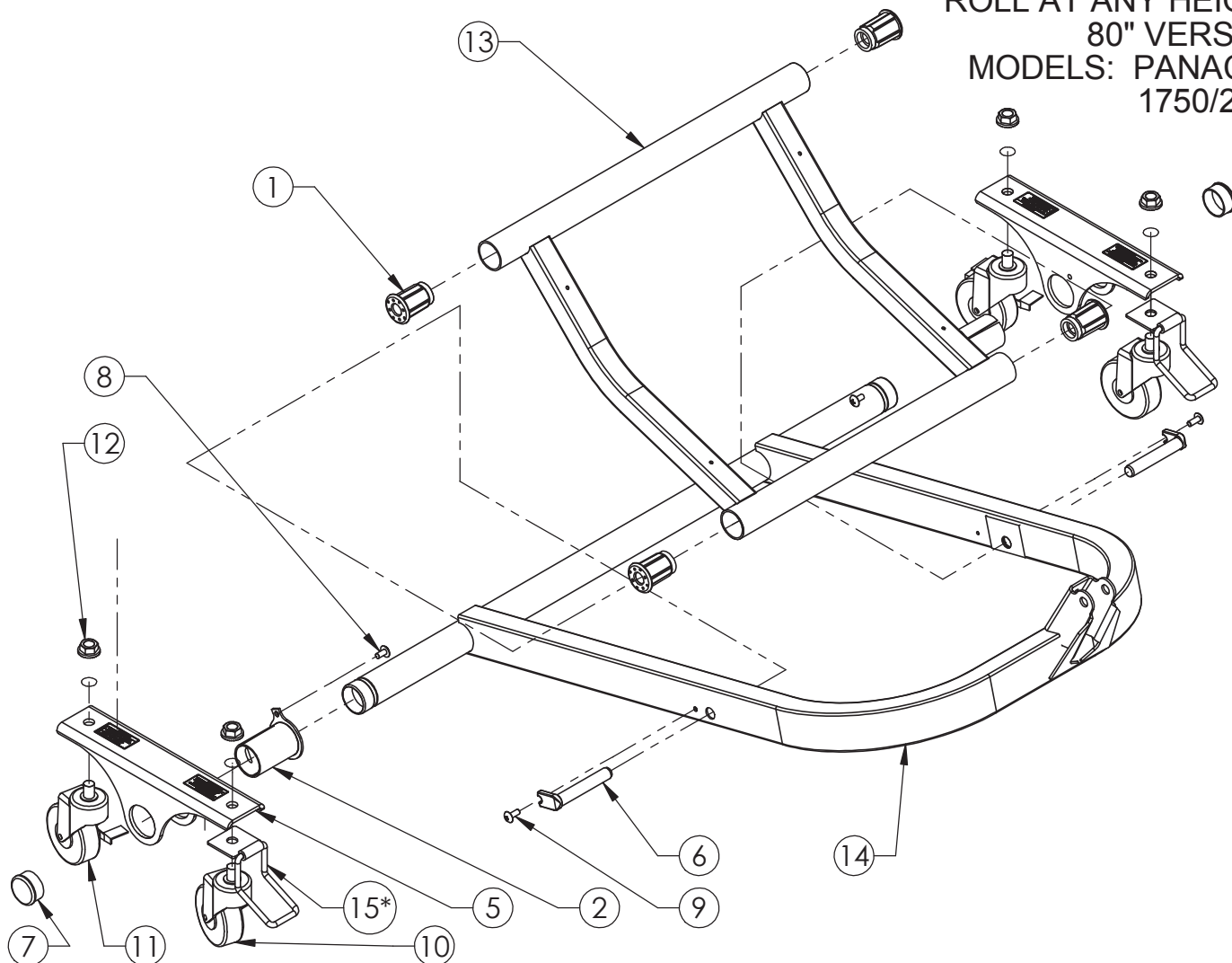


MATTRESS SUPPORT
INTEGRATED WIDTH
80" VERSION
MODELS: PANACEA
2000

ITEM NO.	PART NUMBER	DESCRIPTION
6	11011284	GATCH LEVER, FOOT
7	11011331	PAD, STOP, KNEE/LEG
11	11012238	PIN, SLEEP SURFACE PIVOT
13	11012839	PAN, SEAT,STRUCTURAL
16	11014113	PIN, CLEVIS, 12mm x 1.8"
20	11014658	ACTUATOR, BACK
21	11014659	ACTUATOR, KNEE
22	11014693	PIN, GRAVITY
23	11014726	TETHER
24	11014727	PLUG, DOMED, TUBE
25	11014734	LABEL, INDEXING
26	12470058	CAP, PLUG, 5/8", BLACK
30	12470477	CAP, 1 1/4"
31	12551015	SCREW-#10-32 X .25
32	12552590	SCREW,1/4X-20 X 1 1/2, TTHTF
39	12800032	RING, RUE
42	24005271	CLIP ASM
49	24006525	WLDT., KNEE SECTION
50	24006526	WLDMNT, BACK, LEFT
51	24006527	WLDMNT, BACK, RIGHT
52	24006528	WLDT, BACK SECTION
53	24006529	WLDMNT, KNEE LEFT
54	24006530	WLDMNT, KNEE, RIGHT
55	24006532	WLDMNT, FOOT, LEFT
56	24006533	WLDMNT, FOOT, RIGHT
57	24006534	WLDT., FOOT SECTION
59	39000052	KIT, RIVET, REPLACEMENT
60	39000802	KIT, MATTRESS DECK BEARING
61	39001317	KIT, SET, MATTRESS RETAINER

NOTE: ADD "AL" SUFFIX TO PART NUMBERS FOR SOFT TONE PAINTED PARTS

FRAME COMPONENTS
ROLL AT ANY HEIGHT
80" VERSION
MODELS: PANACEA
1750/2000



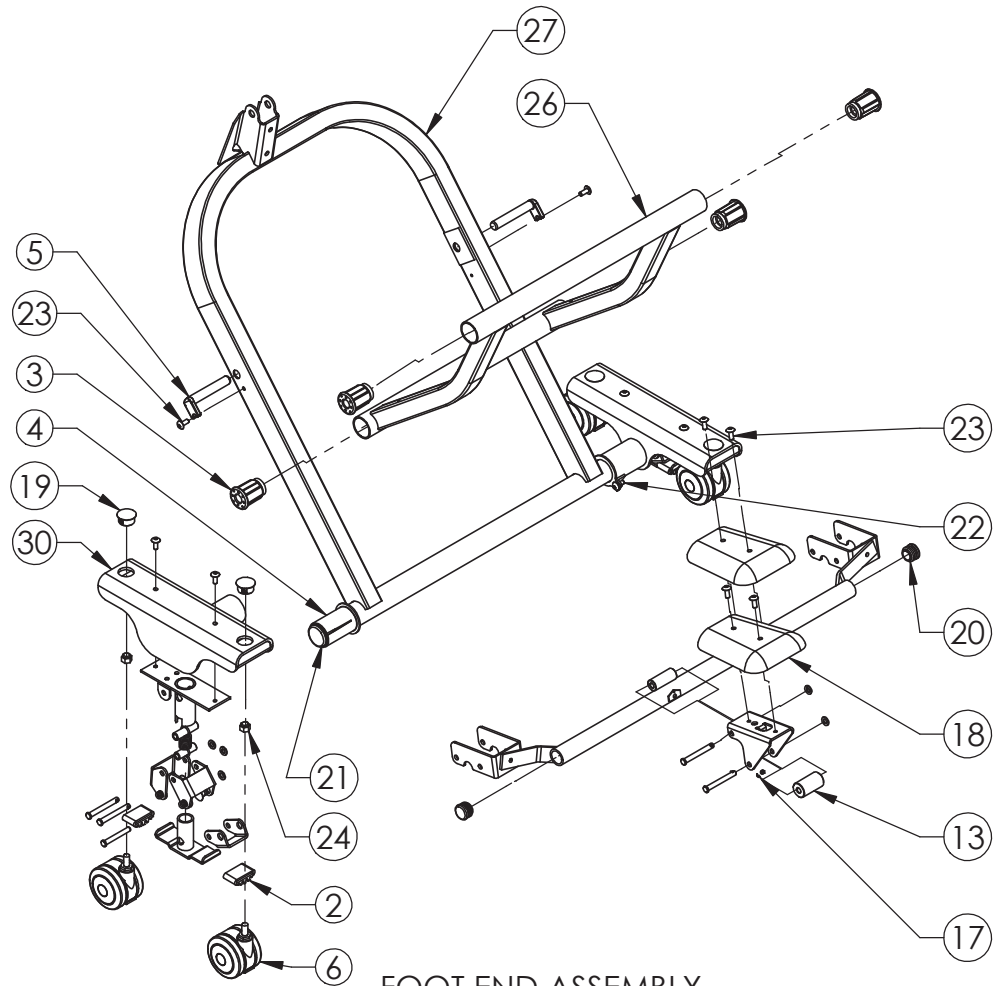
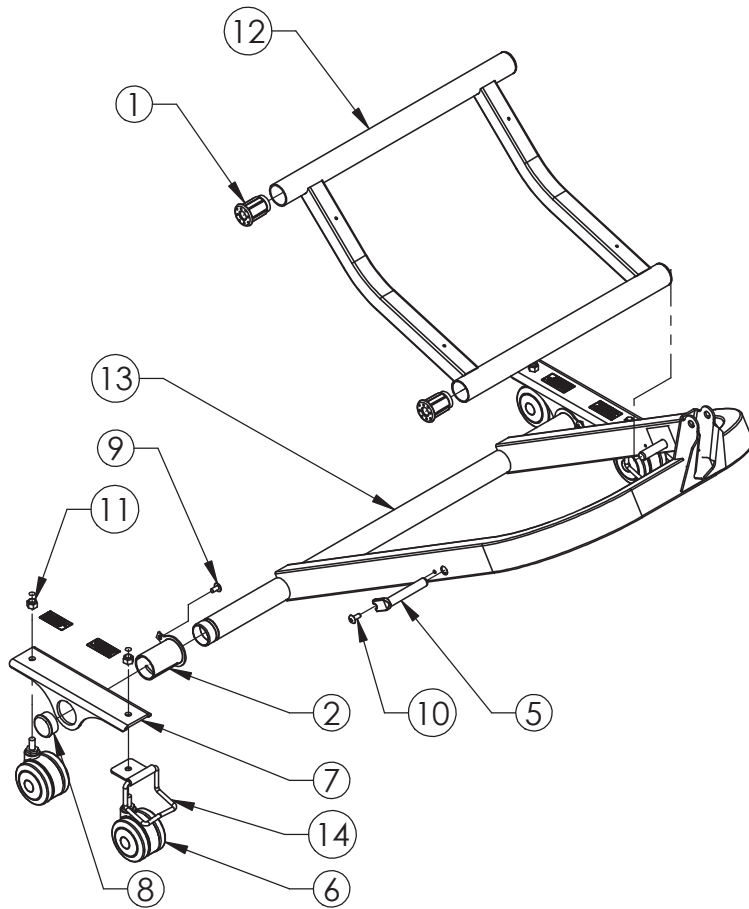
ITEM NO.	PART NUMBER	DESCRIPTION
1	11011230	BUSHING, STABILIZER
2	11012241	BEARING, GRIPLOCK
5	11012492	BRACKET,CASTER,EC III
6	11012662	PIN, STABILIZER PIVOT
7	12470474	CAP, TUBE, 1.5" DIA
8	12552586	SCREW, 1/4-20 X 1/2 TTHTFS
9	12552592	SCREW, 1/4-20 X 5/8, TTHTFS,ZC
10	12630000	CASTER
11	12630001	CASTER, LOCKING
12	12675024	NUT, 1/2-13, WHIZ LOCK, ZINC
13	24006032	WLD., STABALIZER HOOP
14	24006334	WLD., HIGH-LOW LEG
15*	31008901	WHEEL LOCK, STRAIGHT

* HEAD END ASSEMBLY ONLY

NOTE: ADD "AL" SUFFIX TO PART NUMBERS FOR SOFT TONE PAINTED PARTS

FRAME COMPONENTS
SAFETY LOCK
80" VERSION
MODELS: PANACEA
1750/2000

HEAD END ASSEMBLY



FOOT END ASSEMBLY

HEAD END ASSEMBLY

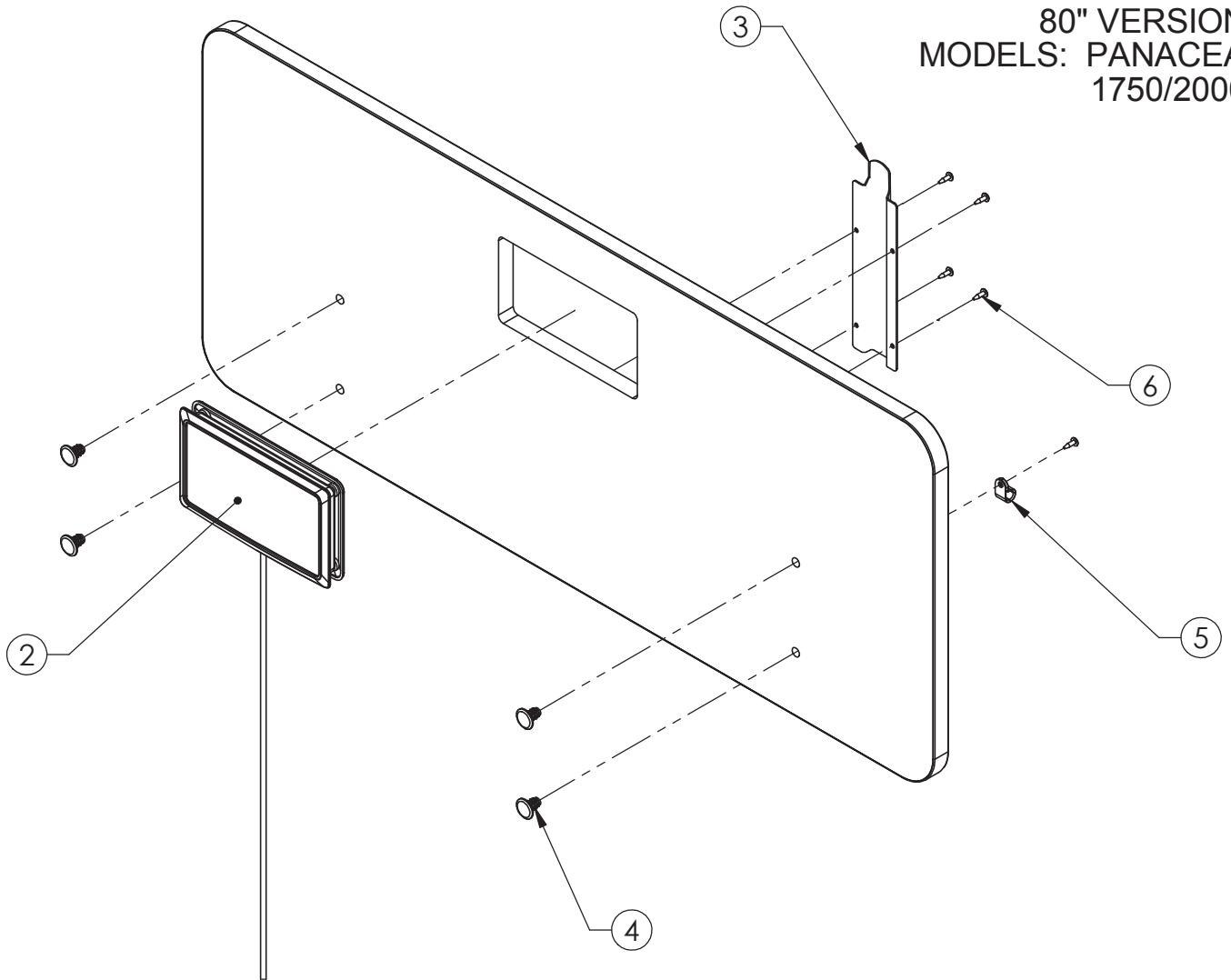
ITEM NO.	PART NUMBER	DESCRIPTION
1	11011230	BUSHING, STABILIZER
2	11012241	BEARING, GRIPLOCK
5	11012662	PIN, STABILIZER PIVOT
6	11013073	CASTER, TWIN, 73mm
7	11014656	BRACKET, TWIN CASTER
8	12470474	CAP, TUBE, 1.5" DIA
9	12552586	SCREW, 1/4-20 X 1/2 TTHTFS
10	12552592	SCREW, 1/4-20 X 5/8, TTHTFS,ZC
11	12673718	3/8-16 NYLOCK NUT
12	24006032	WLD., STABILIZER HOOP
13	24006334	WLD., HIGH-LOW LEG
14	31009115	ASSY, CASTER

FOOT END ASSEMBLY

ITEM NO.	PART NUMBER	DESCRIPTION
2	11009656	PAD, GRIP
3	11011230	BUSHING, STABILIZER
4	11012241	BEARING, GRIPLOCK
5	11012662	PIN, STABILIZER PIVOT
6	11013073	CASTER, TWIN, 73mm
13	11014622	ROLLER,PEDAL
17	11014654	SPRING,EXT,PEDAL
18	11014677	PEDAL
19	12470037	1IN DIA HOLE PLUG
20	12470472	CAP, TUBE, 1.125 DIA.
21	12470474	CAP, TUBE, 1.5" DIA
22	12552591	SCREW, 1/4-20X5/8,TTHTFS
23	12552592	SCREW, 1/4-20 X 5/8, TTHTFS,ZC
24	12673718	3/8-16 NYLOCK NUT
26	24006032	WLD., STABILIZER HOOP
27	24006546	WLD., HIGH-LOW LEG
30	24006550	WLD MNT.,CASTER DECK,RH

NOTE: ADD "AL" SUFFIX TO PART NUMBERS FOR SOFT TONE PAINTED PARTS

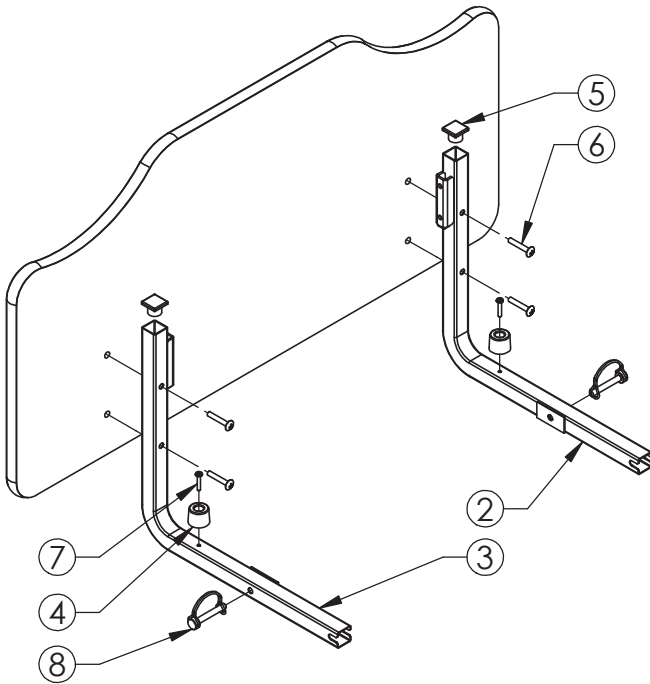
STAFF CONTROL
 PANEL COMPONENTS
 80" VERSION
 MODELS: PANACEA
 1750/2000



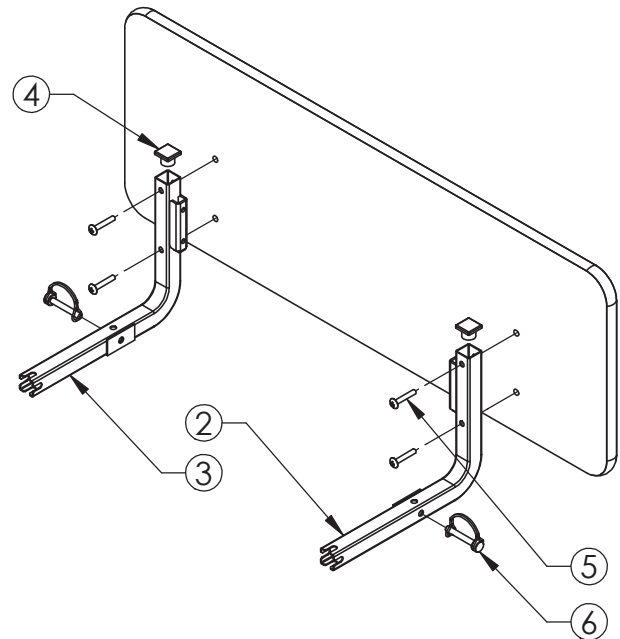
ITEM NO.	PART NUMBER	DESCRIPTION
2	11014663	STAFF CONTROL
3	11014666	COVER,STAFF CONTROL
4	12640029	T-NUT
5	12200688	STRAIN RELIEF, HEYCO
6	12570626	SCREW,#6 X 1/2" PTHSMS

PANEL COMPONENTS
80" VERSION
MODELS: PANACEA
1750/2000

HEAD PANEL ASSEMBLY



FOOT PANEL ASSEMBLY



HARDWARE, HEAD PANEL		
ITEM NO.	PART NUMBER	DESCRIPTION
2	24006561	WLD MNT, HEAD PANEL, RIGHT
3	24006562	WLD MNT, HEAD PANEL, LEFT
4	11013253	BUMPER, STOP
5	12470467	CAP, TUBE, 1" x 1"
6	12542588	SCREW - 1/4-20 x 1.5 PPHMS
7	12551030	SCREW, #10-24 x L PPHTFS,
8	12793116	PIN, SAFETY, 5/16IN X 2IN ROUND

HARDWARE, FOOT PANEL		
ITEM NO.	PART NUMBER	DESCRIPTION
2	24006555	WLD MNT, FOOT PANEL, LEFT
3	24006563	WLD MNT, FOOT PANEL, RIGHT
4	12470467	CAP, TUBE, 1" x 1"
5	12542588	SCREW - 1/4-20 x 1.5 PPHMS
6	12793116	PIN, SAFETY, 5/16IN X 2IN ROUND

NOTE: ADD "AL" SUFFIX TO PART NUMBERS FOR SOFT TONE PAINTED PARTS



1-800-634-7328 ■ directsupply.com

Distributed by Direct Supply Manufacturing, Inc. 6699 N Industrial Road, Milwaukee, WI 53223.

© 2014 Direct Supply Manufacturing, Inc. All Rights Reserved. Direct Supply®, Panacea®, and all associated logos are the registered trademarks of Direct Supply, Inc., used under license.

Taking Cost Out of Healthcare®

