

Overbed Table Assembly and Operating Instructions Ensamblado de Mesa de Cama e Instrucciones de Uso

IMPORTANT WARNINGS

To avoid serious injury and/or death to a patient or resident, follow ALL instructions and these guidelines:

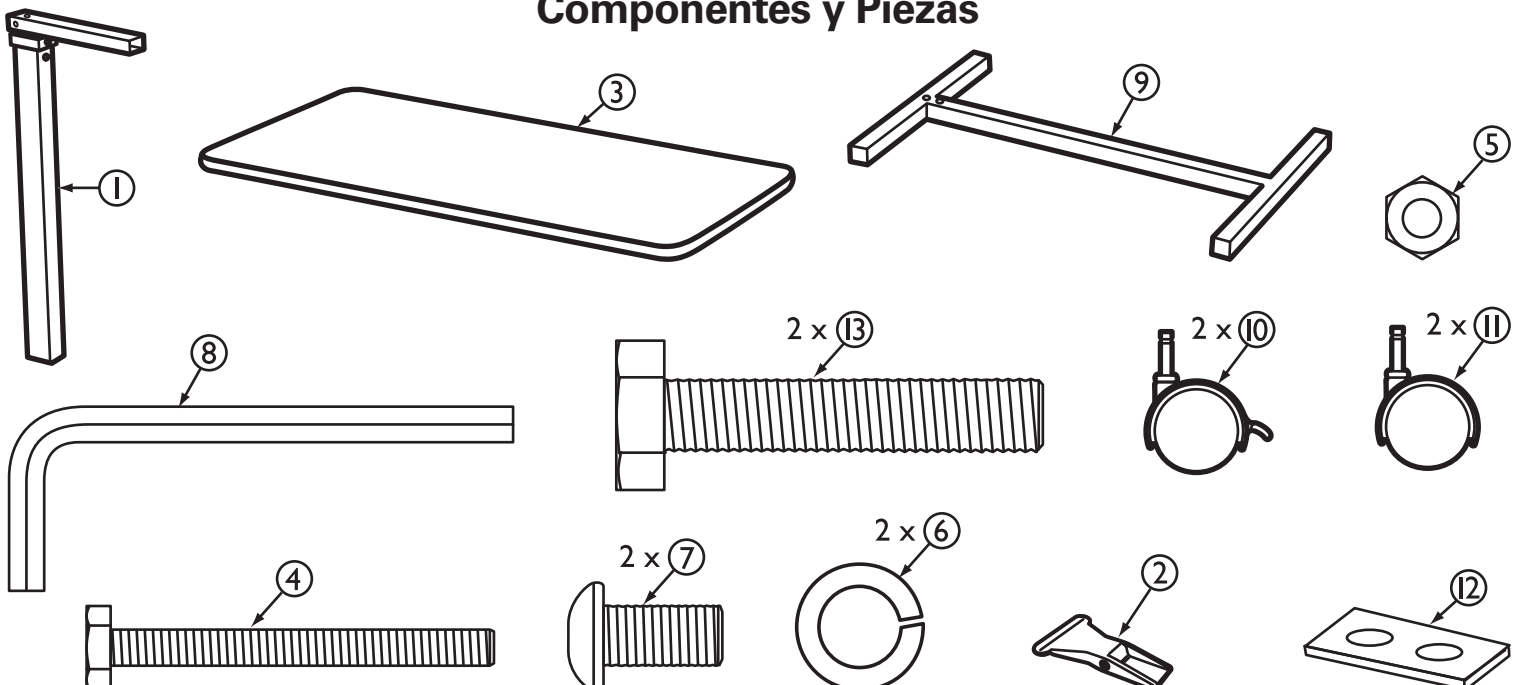
- This product is designed ONLY as patient/resident convenience as a surface for reading, eating, or keeping small personal items such as glasses within reach.
- The weight limit for this product is 50 lbs. (22 kg.); the weight should be evenly distributed over the top of the product's table.
- Overloading this product could result in the product breaking as well as damage to property and/or serious injury.
- This product should NOT be used: as a walker, to assist a person in sitting down or standing up, to prevent or brace a person's fall, or to transport persons. Use ONLY as directed.
- This product is designed for indoor use ONLY within close proximity of skilled caregivers. It is not designed to hold electrical items (such as televisions) and should be kept away from open flames and excessive heat.
- Inspect the product for damage before each use. DO NOT use the product if it appears to be damaged or unstable and DO NOT alter the product in any way.
- DO NOT overtighten the screws or use power tools when assembling this product.

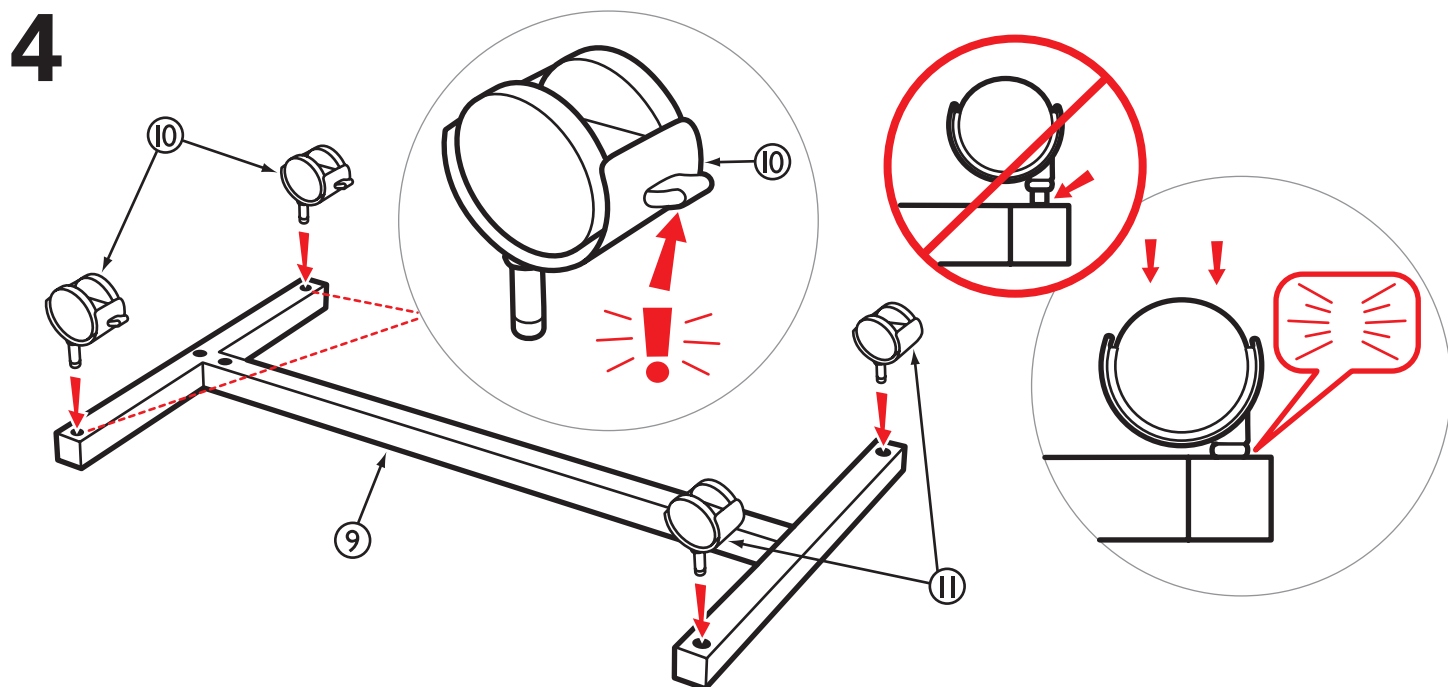
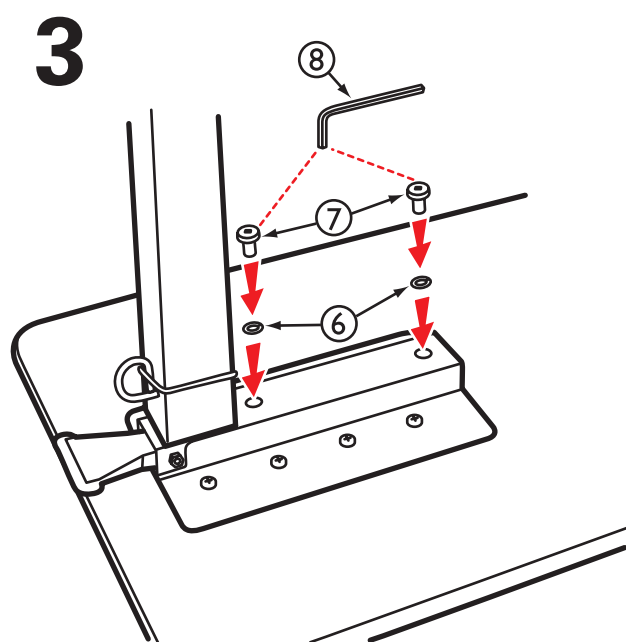
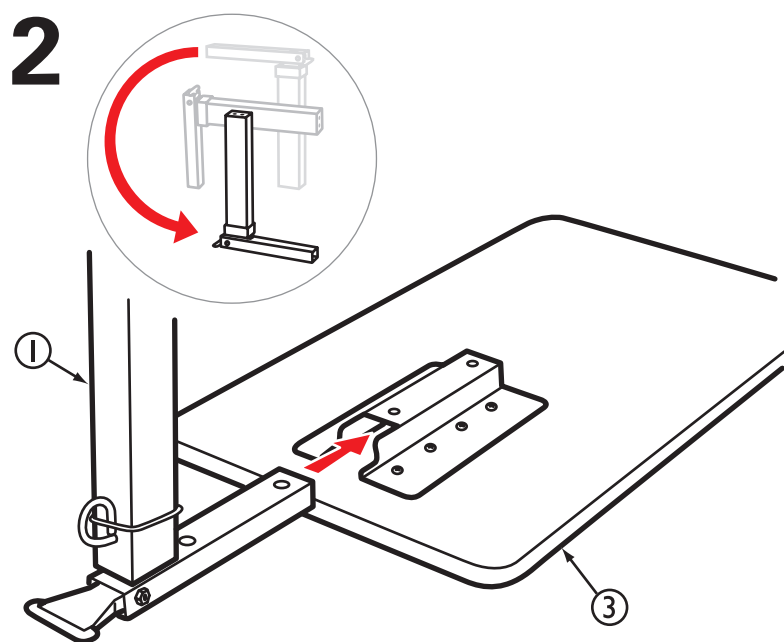
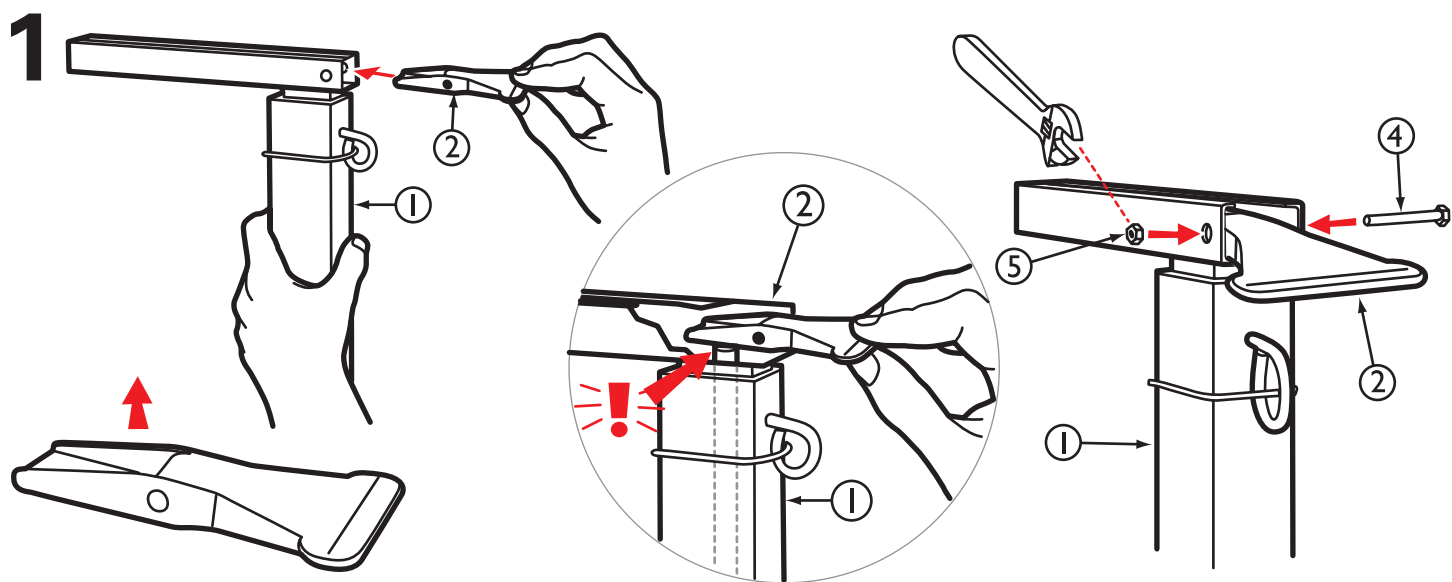


Tools Needed
Herramientas
Necesarias

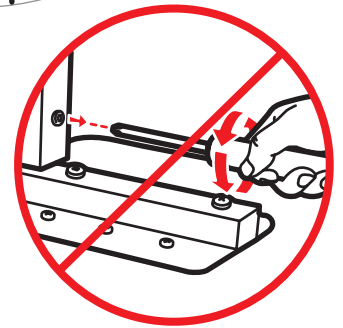
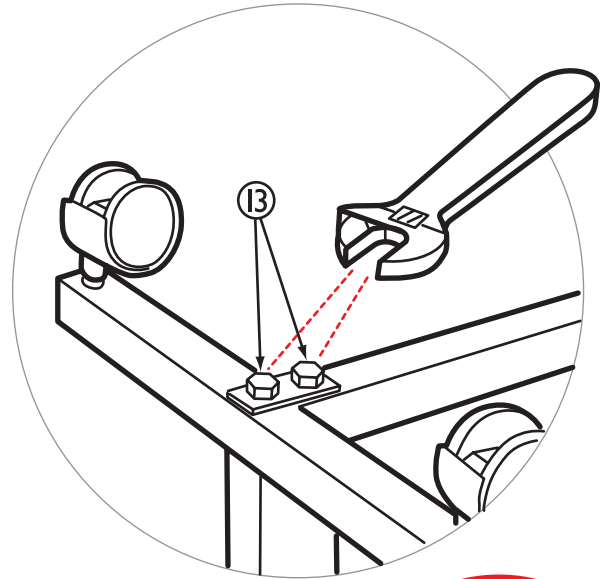
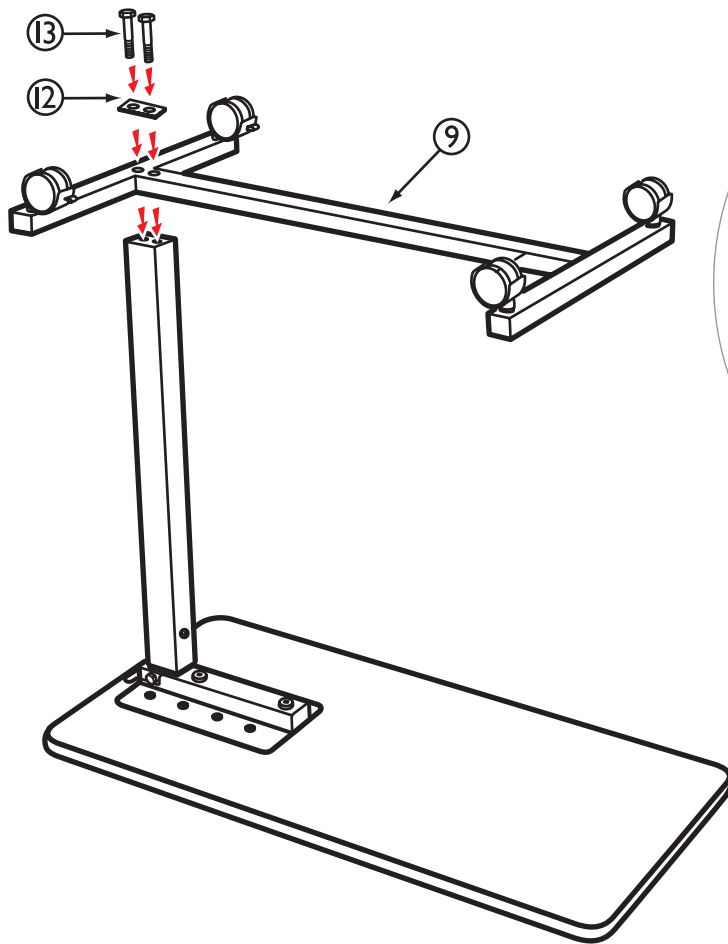


Components and Parts Componentes y Piezas





5



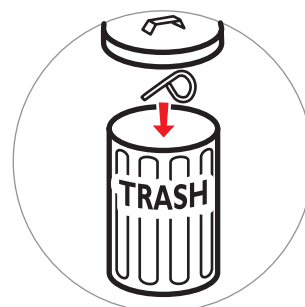
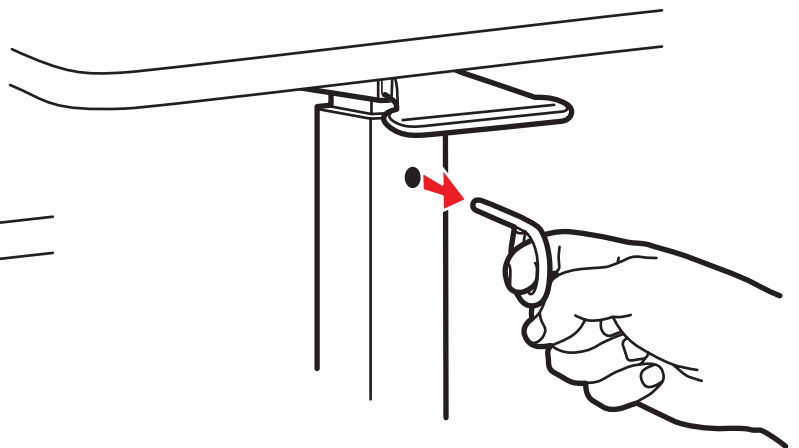
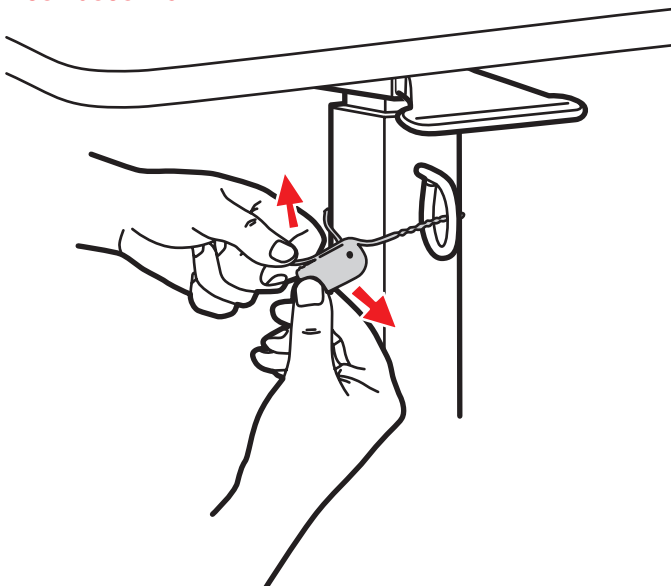
6

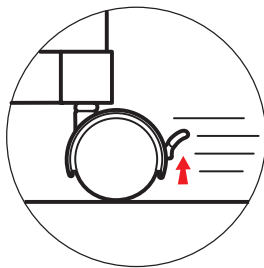
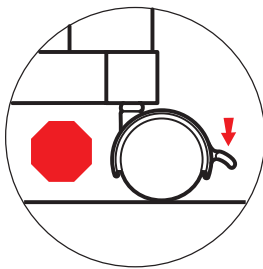
WARNING: This overbed table contains a high-tension spring-loaded system.

To prevent personal injury or damage to the overbed table, do not attempt Step 6 until Steps 1-5 are complete.

AVISO: Esta mesa de cama tiene un sistema de resortes de alta tensión.

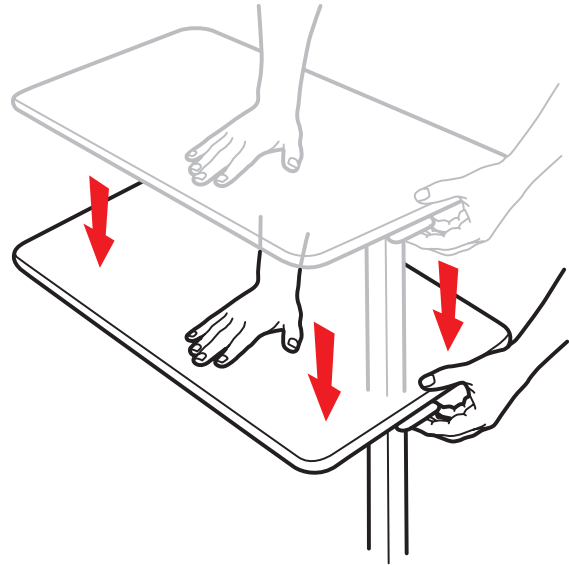
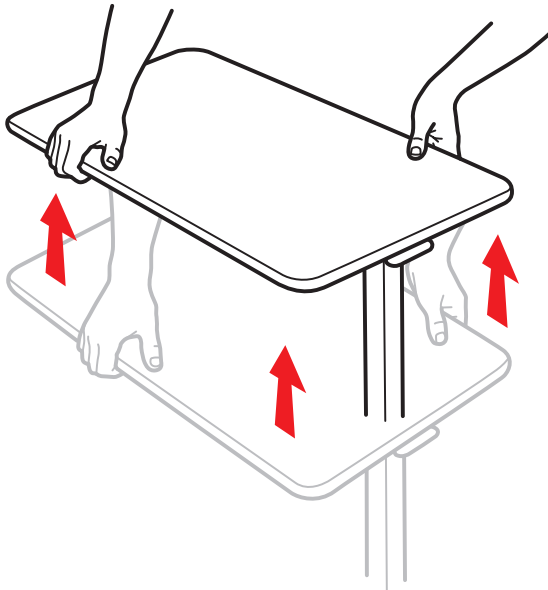
Para prevenir daño personal o a la mesa de cama no realizar el Paso 6 sin antes completar los Pasos 1-5.





CUSTOMER SERVICE

Our promise to you is that you will have a convenient and easy ordering experience, receive a quality overbed table, and enjoy outrageous customer service. If you have any questions about the overbed table you have purchased or would like to request warranty service, please contact: **Direct Supply® Equipment & Furnishings™**, 1-800-634-7328, 6767 North Industrial Road, Milwaukee, WI 53223, deardirect@directsupply.net



LIMITED 1-YEAR WARRANTY

Direct Supply Manufacturing, Inc. warrants to you, as the original purchaser, for the limited warranty period stated above from the date we ship the product to you that we will repair or replace any product which is defective in material or workmanship. Please note that the decision to repair or replace a product will be at our discretion.

Our warranty applies only if the product is properly maintained by the original purchaser for normal, indoor use and does not cover normal wear and tear, modification of the product, or damage caused by abuse, improper use, failure to maintain, use which exceeds the published product limitations, or the combination of any product with another product. In addition, our warranty does not cover characteristics or natural variations in wood grain, colorfastness, stains, spills, or exposure to chemicals, odors, heat or light. In certain cases, we may provide you repair or adjustment instructions and/or replacement parts, and ask you to perform a repair or adjustment or replace a defective part.

Our warranty gives you specific legal rights, and you may also have other rights, which vary, from state to state. The limited warranty period and our obligations under the warranty end once you transfer the product to someone

else, or at the end of the applicable limited warranty period identified below, whichever is earlier.

DIRECT SUPPLY MANUFACTURING, INC. MAKES NO IMPLIED WARRANTIES OF MERCHANTABILITY OR FITNESS FOR A PARTICULAR PURPOSE; THESE AND ALL OTHER IMPLIED WARRANTIES ARE SPECIFICALLY DISCLAIMED. TO THE FULLEST EXTENT ALLOWED BY LAW, DIRECT SUPPLY MANUFACTURING INC. WILL NOT BE LIABLE FOR ANY INCIDENTAL, SPECIAL, CONSEQUENTIAL OR PUNITIVE DAMAGES, OR LOST PROFITS THAT MAY RESULT FROM THE DEVICE OR YOUR USE OF OR INABILITY TO USE THE DEVICE EVEN IF ADVISED OF THE POSSIBILITY OF SUCH DAMAGES. OUR TOTAL LIABILITY TO YOU, IF ANY, IS LIMITED TO THE PRICE OF THE DEVICE OR SERVICE GIVING RISE TO YOUR CLAIM. Some states do not allow an exclusion or limitation of incidental or consequential damages or how long an implied warranty lasts, so the above limitations or exclusions may not apply to you. If implied warranties are not excluded, and to the extent allowed by law, we limit any and all implied warranties to the applicable warranty period identified above. Except for rights under any applicable state law, the remedies provided under this warranty are your sole and exclusive remedy for any breach of our warranty and state the entire limit of our responsibilities.

Direct Supply® Direct Choice™ products are available to purchase exclusively through Direct Supply Equipment & Furnishings®, a division of Direct Supply®, Inc. Distributed by Direct Supply® Manufacturing™, Inc. 6699 N Industrial Road, Milwaukee, WI 53223.

© 2011-2012 Direct Supply Manufacturing, Inc. All Rights Reserved. Direct Supply®, Direct Choice™, and all associated logos are the registered trademarks of Direct Supply Inc., used under license.

**DIRECT
SUPPLY**
Equipment & Furnishings

**DIRECT
SUPPLY**
aptura®

**DIRECT
SUPPLY**
Services & Solutions™

**DIRECT
SUPPLY**
TELS®

**DIRECT
SUPPLY**
DSSI®