

## 2.7 Stackable Washer Maintenance Manual



Before your maintenance starts, please do pull out the power plug or disconnect power and close the tap.

### **⚠ Warnings**

- Solvents are forbidden to avoid that the washing machine is damaged, and toxic gases are generated or exploded.
- Never use water to sprinkle and wash the washing machine.
- It is forbidden that the detergents containing PCMX are used to clean the washing machine.
- Certain internal parts are intentionally not grounded and may present a risk of electric shock only during servicing. Service Personnel-Do not contact the following parts while the appliance is energized: Electrical value, Drain Pump, Door Lock, Dry Heater(Combo), Fan Motor(Combo).

### **Cleaning and Maintenance of Washing Machine Cabinet**

Proper maintenance on the washing machine can extend its working life. The surface can be cleaned with diluted non-abrasive neutral detergents when necessary. If there is any water overflow, use the wet cloth to wipe it off immediately. No sharp items are allowed to strike the cabinet.

**NOTES:** formic acid and its diluted solvents or equivalent are forbidden.

### **Clean Internal Drum**

The rusts left inside the drum by the metal articles shall be removed immediately with chlorine-free detergents. Never use steel wool.

### **Dispose a Frozen Washing Machine**

When the temperature drops below zero and your washing machine gets frozen, you may:

1. Disconnect the power supply for the washing machine.
2. Wash the tap with warm water to loosen inlet pipe.
3. Take down inlet pipe and immerse it in warm water.
4. Pour warm water into washing drum and wait for 10 minutes.
5. Reconnect inlet pipe to the tap and check whether inlet and outlet are working normally.

**NOTES:** when the washing machine is reused, make sure the ambient temperature is above 0 C

### **Anti-freeze**

If your washing machine is located in the room where it can get frozen easily, please drain the remaining water inside drain pipe and inlet pipe thoroughly.

Remove the remaining water in inlet pipe:

1. Close the tap.
2. Screw off the inlet pipe from tap and put its end into the container.
3. Start up any procedure except single Wash or Drain procedure. Water will be drained out of inlet pipe if any for about 40 seconds.
4. Reconnect the inlet pipe to tap.

## Remove the remaining water in drain pump

**⚠ WARNING:** To avoid burning, it shall be done after the hot water inside the machine cools down.

## Clean detergent box and grooves

Clean detergent drawer and grooves

1. Press down the arrow location on softener cover inside the drawer.
2. Lift the clip up and take out softener cover and wash all grooves with water.
3. Restore the softener cover and push the drawer into position.

## Clean inlet filter

Inlet filter shall must be cleaned if there is not any or insufficient water in when the tap is opened.

## Clean the tap filter:

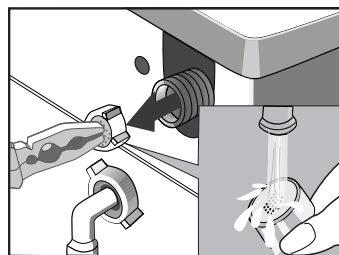
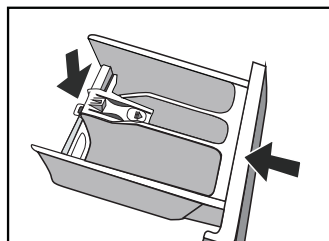
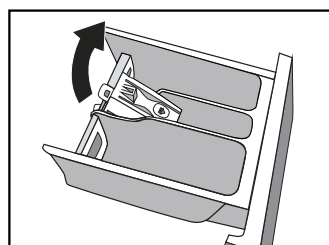
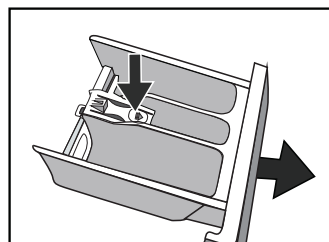
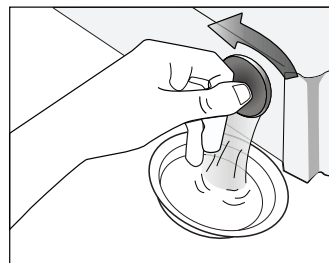
1. Close the tap.
2. Select any procedure except "Wash" or "Drain" procedure.
3. Press the button "Start/Pause" and keep the procedure running for about 40 seconds.
4. Remove the inlet pipe from the tap.
5. Use water to wash the filter.
6. Reconnect the inlet pipe.

## Washing the filter in washing machine:

1. Screw off the inlet pipe from the backside of the machine.
2. Pull out the filter with long nose pliers and reinstall it back after being washed.
3. Reconnect the inlet pipe.
4. Open the tap and make sure there is no water leakage.
5. Close the tap.

**⚠ WARNING:** Pull out the power plug to avoid electrical shock before washing. After using the washing machine, pull out the power cord and close the door tightly to avoid pinching the kids.

## Remove foreign matters

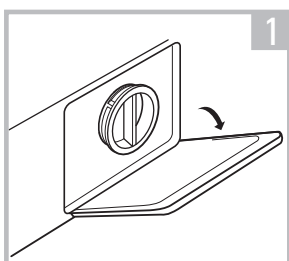


## Drain Pump Filter:

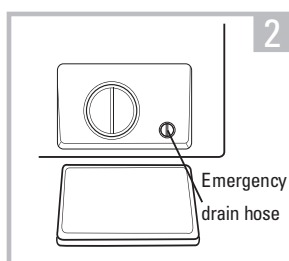
Drain pump filter can filter the yarns and small foreign matters from the washings. Clean the filter periodically to ensure the normal operation of washing machine.

**⚠ WARNING:** According to the soil level within the cycles and the frequency of the cycles, you have to inspect and clean the filter regularly. The pump should be inspected if the machine does not empty and/or spin; The machine makes an unusual noise during draining due to objects such as safety pins, coins etc. blocking the pump.

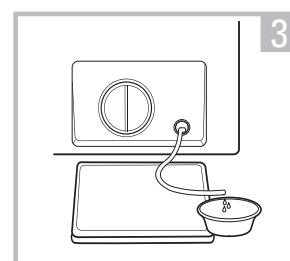
## Drain Pump Filter:



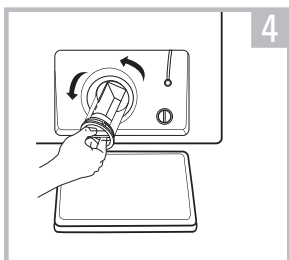
Open the lower cover cap



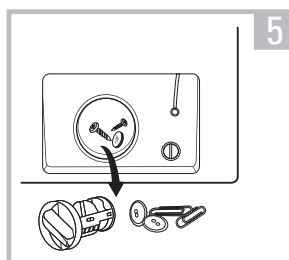
Rotate 90° and pull out the emergency drain hose, and take off the hose cap



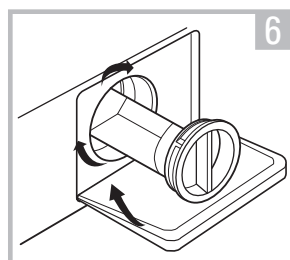
After water runs out, reset the drain hose



Open the filter by turning to the counter clockwise



Remove extraneous matter



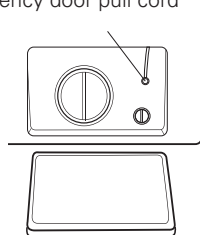
Close the lower cover cap

**⚠ WARNING:** When the appliance is in use and depending on the programme selected there can be hot water in the pump. Never remove the pump cover during a wash cycle, always wait until the appliance has finished the cycle, and is empty. When replacing the cover, ensure it is securely retightened so.

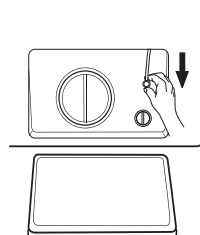
## Emergency Door Release

In case of power failure or other circumstances and door cannot be opened. If it is necessary to open the door under this circumstances, please pull down the pull cord inside emergency door and restore the pull cord after opening the door.

Emergency door pull cord



1.Open filter door



2.Emergency pull cord

**⚠ WARNING:** The machine is not allowed to use the emergency switch pull cord during washing. If need to run machine urgently, it is recommended to open door after water is cooled, to avoid getting burn caused by high temperature residual water outflow from the machine tub