



Fabric & Finish Selection Guide

get inspired with fabrics
for every style



Selecting fabrics and finishes is easier than ever

Use this guide as a tool to select fabrics and finishes for your Senior Living and Healthcare environments. All fabrics and finishes shown throughout this guide have been curated by our experienced team of interior designers to withstand the unique needs of your community while considering budget and 2024 design trends. Every fabric and finish showcased in the guide is available for all DirectSupply.net furnishings with the added option to order free samples.

Inspiring fabrics on pages 4 - 9 are trendy, fashion-forward options recommended for unique spaces. Add a pop of color to spice up any room using these fabrics.

Pre-selected schemes on pages 10 - 15 can stand up to the wear and tear. Perfect for everyday living spaces. Our designers selected these easy-to-order fabrics while considering budget and durability.



Maxwell Thomas® Kennewick Collection Lounge Chair in Pollack vivienne 1050 (back) and Anzea cuddle baloo (seat) with mocha finish and brass nailhead trim. Maxwell Thomas® Odessa Lounge Chair in JF Fabrics koller 67J6521 (back) and Brentano 8230 galileo (seat) with mocha finish. Maxwell Thomas® Macon Collection Sofa in Anzea cuddle baloo with mocha finish. Maxwell Thomas® Dillonfield Round End Table in athens white rub finish. Maxwell Thomas® Atwood Lounge Chair in Architex britannia biscotti with mocha finish.

Create exceptional spaces

Our selection goes far beyond this guide. Contact your Direct Supply sales representative to navigate our expansive fabric selections and custom finish options.

Need help choosing what colors and patterns are right for your space? Request a free sample or schedule a free design consultation to get started at DirectSupply.com/Impressions

Use the guide

Inspiring fabrics 4

Pre-selected schemes 10

Shop by pattern 16

Woven performance fabrics 16

Vinyl fabrics 26

Quick ship fabrics & finishes 32



Get Inspired

Discover fabrics for every style. All of our fabrics are curated by experienced interior designers and can be applied to our furnishings offerings. Explore trendy, fashion-forward options that add a pop of color to spice up any room.



“Whether you’re replacing one piece of furniture or revamping an entire room, my team can help coordinate your new and existing furnishings. We can create design themes and color schemes for any space. Investing in updated, trendy fabrics and furnishings can help elevate your community for enhanced marketability. Work with us to create memorable designs that appeal to your diverse populations.

› Jeanna S., Design Manager

Schedule a FREE design consultation or request fabric samples. Get started at DirectSupply.com/Impressions.



Citrus Zest

- a. Douglass: Axl/Flirt*
- b. Coral: Repetition/24K
- c. Burch: Wayfarer/Cranapple
- d. DesignTex: Corded/Orange
- e. Architex: Oraganza/Pesto
- f. CF Stinson: Petal Dots/Wild Fire
- g. Kravet: River Park/Meadow
- h. DesignTex: Chenille Chevron/Yellow
- i. Architex: Oraganza/Flame
- j. Burch: Victory/Carnival

City Slick

- k. Maharam: Amulet/Quartz*
- l. Coral: Repetition/Black Sheep
- m. Coral: Venom/Saddle
- n. Burch Chateau/Granite
- o. Burch: Parlour/Sahara
- p. DesignTex Chunky Tweed/Grey
- q. CF Stinson: Fenestra Tool/Lark
- r. Architex: Greenwich/Stone
- s. Coral: Winston/Latte
- t. Architex: Zenith/Reed

Cognac Lounge

- u. Fabricut: Riverwalk/Spice*
- v. Coral: Repetition/Angora
- w. Architex: Bargello/Fantasy*
- x. Coral: Winston/Boxwood
- y. Architex: Las Palmas/Parsley
- z. Architex: English Leather/Jute
- 2a. Architex: Cane/Basil
- 2b. Architex: McQueen/Cinder
- 2c. DesignTex: Corded/Charcoal
- 2d. Momentun: Trilogy/Lichen*





Alluring Fabrics

Experience the possibilities of feel-good fabrics that impress.

Our wide selection includes durable performance fabrics and vinyls to achieve the ideal look and outcomes for your space. Use these fabrics as a starting point for your design concepts or order samples to choose your favorite.

Heritage

- a. Burch: Memento/Gingersnap
- b. Architex: Purebotanica/Denim
- c. Architex: James Dean/Vinaceous
- d. Douglass: Bandeau/Coastal Blue*
- e. Architex: Purefelt/Vino
- f. Coral: Winston/Honey
- g. Kravet: Decoy/Citron
- h. Architex: McQueen/Biscuit
- i. Architex: Greenwich/Sage
- j. Burch: Labyrinth/Sienna

Little Miss Sunshine

- k. Mayer: Fanfare/Fiesta
- l. Architex: Purevogue/Ivory
- m. Coral: Repetition/Peach fuzz
- n. Kravet: Garden Wall/Sand Dollar
- o. Burch: Victory/Aruba
- p. CF Stinson: Lara/Buttercup
- q. DesignTex: Windowpane Crypton/Aqua
- r. CF Stinson: Lara/Champion
- s. Coral: Winston/Grey
- t. CF Stinson: Loophole/Ginseng*

Prairie

- u. CF Stinson: Jambi Stripe Too!/Cove*
- v. Coral: Winston/Baltic
- w. Coral: Repetition/Fawn
- x. CF Stinson: Nest/Indigo*
- y. DesignTex: Lake Placid Crypton/Lapis
- z. DesignTex: Windowpane Crypton/Creme
- 2a. CF Stinson: Fenestra Too!/Marsh
- 2b. Burch: Nexus/Gilded
- 2c. Architex: New Deal/Eleanor
- 2d. Architex: Inspire/Dream

Quiet Luxury

- 2e. Burch: Botanica/Sumac
- 2f. Burch: High Line/Kelly*
- 2g. Architex: Wormwood/Acquisition
- 2h. Burch: Parlour/Ruby
- 2i. Architex: James Dean/Harbor
- 2j. Architex: Organza/Biscuit
- 2k. Burch: Dash/Space*
- 2l. Coral: Winston/Seaglass
- 2m. DesignTex: Chunky Tweed/Pink
- 2n. Architex: Purebotanica/Natural





Stately Charm

Create a timeless ambiance with earthy colors and bold accents, or find coordinating fabrics for an existing scheme.

Maximalist

- a. Carnegie: Maxwell Print/110*
- b. Architex: Hush/Pacific
- c. Burch: Glamour/Olive*
- d. Architex: Intersect/Night
- e. DesignTex: Chunky Tweed/Blue
- f. Coral: Venom/Storm
- g. DesignTex: Kith/Avocado*
- h. Architex: Static/Stone
- i. Burch: Victory/Lapis
- j. Architex: Las Palmas/Paprika

Pianist

- k. Momentum: Central/Regal*
- l. Coral: Voyage/Antique Brass
- m. Coral: Winston/Brick
- n. CF Stinson: Breton/Tudor
- o. DesignTex: Corded/Merlot
- p. Architex: Organza/Haze
- q. Kravet: 35138-5*
- r. Architex: Estoile/Vital*
- s. Kravet: Mossi/Coastal
- t. Coral: Willoughby/Cotton

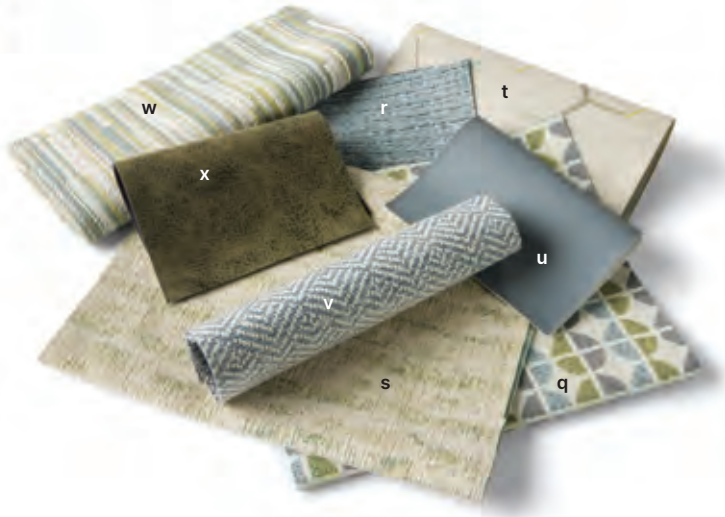
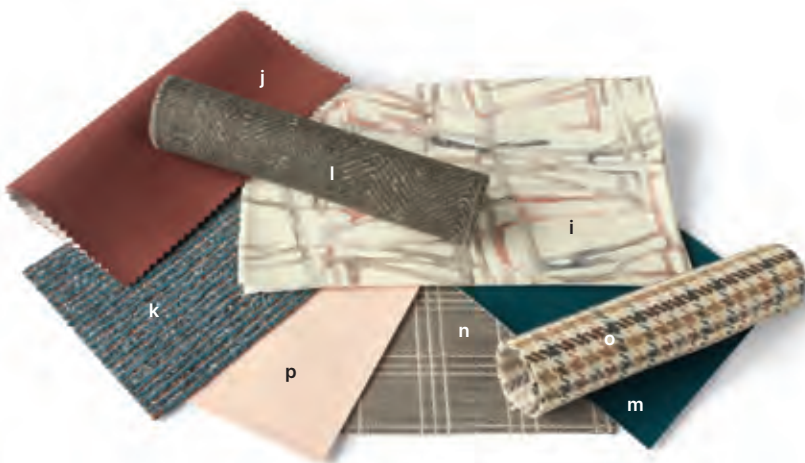
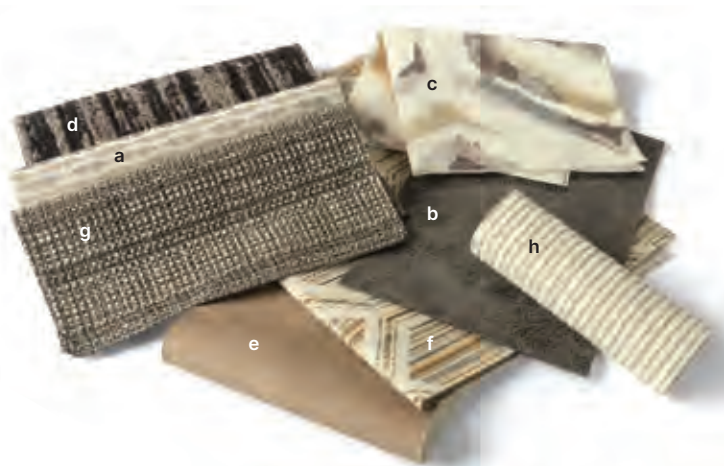
Set Sail

- u. Brentano: Xanadu/Bluebird*
- v. Kravet: 36411-5*
- w. Coral: Winston/Fawn
- x. Burch: Parlour/Nautical
- y. DesignTex: Corded/Navy
- z. Burch: Homestead/Cinder
- 2a. Architex: Straight Talk/Conference*
- 2b. Architex: Greenwich/Tawny
- 2c. Architex: New Deal/Economy
- 2d. Kravet: Decoy/Riverstone



Shop our pre-selected fabric schemes

Our designers have done the work for you with these pre-selected fabric schemes, custom-designed with durability and budget in mind. In the next 6 pages, discover a diverse array of fabric schemes to elevate any space.



Black Tie

- a. Architex: Indio/Sesame
- b. Architex: New Deal/Museum
- c. Coral: Contessa/Mineral
- d. Coral: Reptile/Blacksmith
- e. Architex: English Leather/Homestead
- f. Kravet: Northport/Driftwood
- g. Architex: Boardwalk/Coney Island
- h. DesignTex: Corded/White

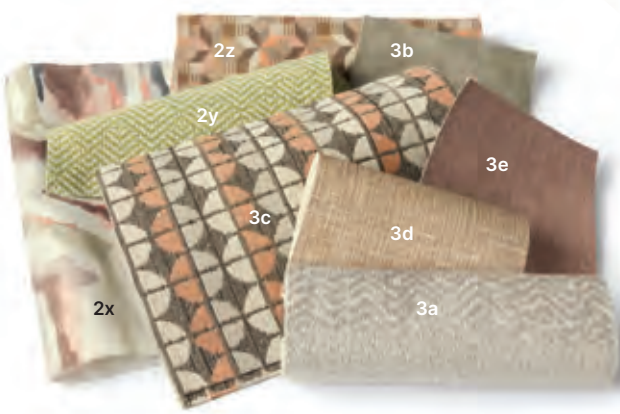
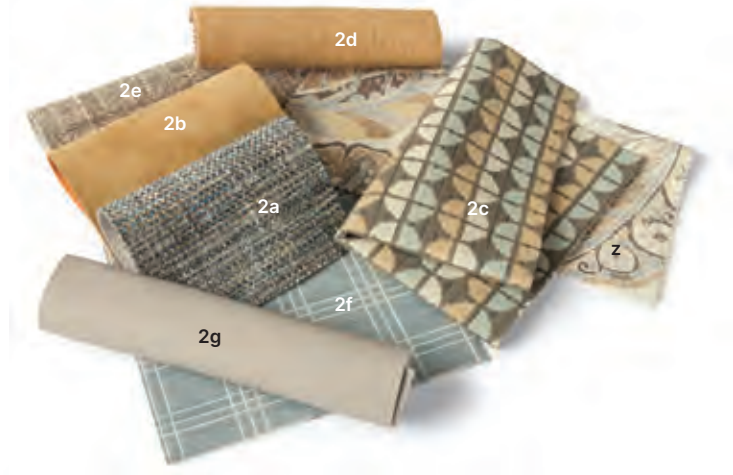
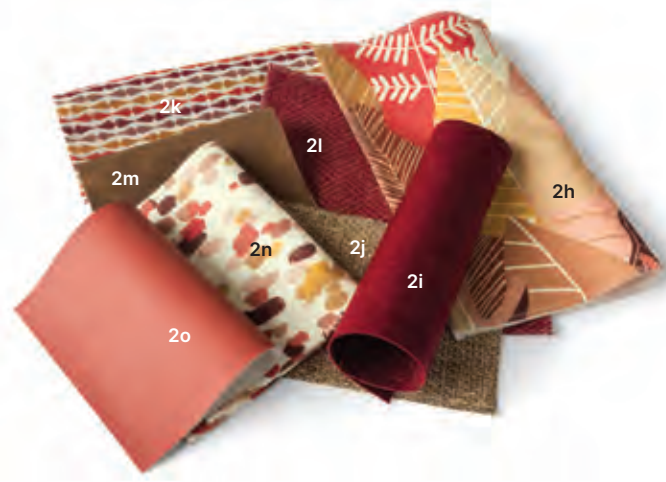
Blind Date

- i. Coral: Czar/Blossom
- j. Coral: Venom/Red Rock
- k. DesignTex: Corded/Pool
- l. Coral: Repetition/Koala
- m. Architex: Hush/Nautical
- n. Burch: Parlour/Stratus
- o. Burch: Memento/Heirloom
- p. CF Stinson: Lara/Barre

Blue Bayou

- q. Kravet: Decoy/Seaglass
- r. DesignTex: Corded/Light Blue
- s. Kravet: Mossi/Spring
- t. Architex: Edge/Citrine
- u. Architex: Hush/Wolf Grey
- v. Architex: Zenith/Azure
- w. Kravet: Watershed/Seaglass
- x. Architex: New Deal/Education

**To use Maxwell Thomas® fabrics on brands other than Maxwell Thomas® furnishings, contact Direct Supply. Certain restrictions apply.*



Chateau

- z. Coral: Influential/Driftwood
- 2a. DesignTex: Chunky Tweed/Medium Blue
- 2b. Architex: McQueen/Clay
- 2c. Kravet: Decoy/Mineral
- 2d. Kravet: Marnie/Toffee
- 2e. Burch: Victory/Cafe Au Lait
- 2f. Burch: Parlour/Cornflower
- 2g. CF Stinson: Lara/Gate

Cinnabar Sunset

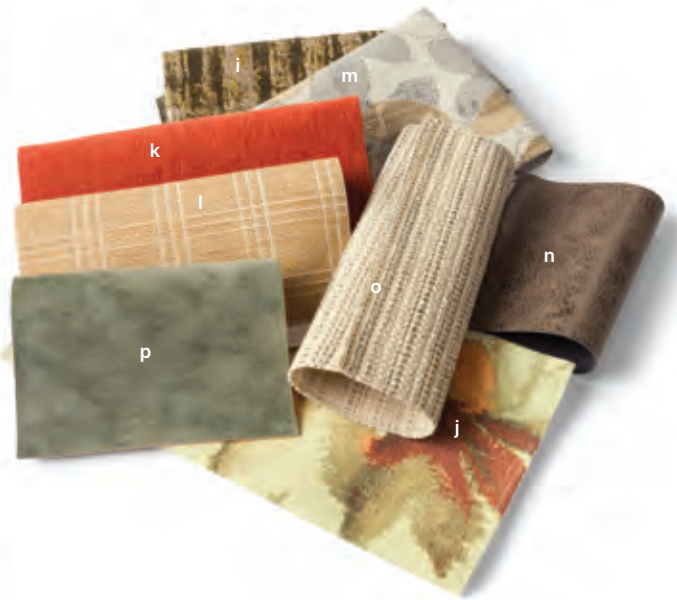
- 2h. Coral: Jubilee/Sunset
- 2i. Coral: Winston/Shiraz
- 2j. DesignTex: Lake Placid/Sepia
- 2k. Architex: Indio/Sumac
- 2l. Architex: Purevogue/Porto
- 2m. Architex: English Leather/Aurora
- 2n. Coral: Joy/Sunset
- 2o. Architex: Hush/Terracotta

Down the Cape

- 2p. Kravet: Bayview/Harbor
- 2q. Coral: Winston/Denim
- 2r. Coral: Wiston/Ginger
- 2s. Architex: Zenith/Voyage
- 2t. Architex: Greenwich/Bronze
- 2u. Kravet: Cato/Moonstone
- 2v. Kravet: Watershed/Driftwood
- 2w. DesignTex: Linnen/Parafin

Earthenware

- 2x. Coral: Contessa/Blossom
- 2y. Architex: Zenith/Hula
- 2z. Kravet: Myriad/Desert Blossom
- 3a. Burch: Labyrinth/Frost
- 3b. Architex: McQueen/Silver Dollar
- 3c. Kravet: Decoy/Clay
- 3d. Architex: Worsted/Antler
- 3e. DesignTex: Linnen/Plum



Everglades

- a. Kravet: Daybreak/Lagoon
- b. CF Sinson: Lara/Hydro
- c. Kravet: Myriad/Lagoon
- d. Architex: Greenwich/Creme
- e. Coral: Winston/Caspian
- f. Kravet: Watershed/Hillside
- g. Coral: Repetition/Moss
- h. DesignTex: Chunky Tweed/Turquoise

Fall Frolic

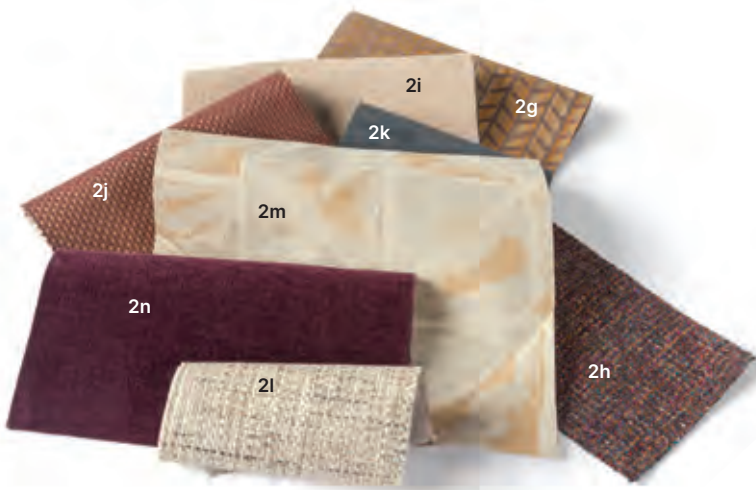
- i. Coral: Reptile/Moss
- j. Coral: Avalon/Autumn
- k. Coral: Winston/Tuscan Sun
- l. Burch: Parlour/Butterscotch
- m. Kravet: Leaf Dance/Sandstone
- n. Architex: New Deal/Warm Springs
- o. Architex: Boardwalk/Myrtle Beach
- p. Architex: McQueen/Pine

Grapefruit Paloma

- q. Coral: Joy/Santa Fe
- r. DesignTex: Chunky Tweed/Orange
- s. Architex: Purevogue/Teal
- t. Architex: Big Game/Mara
- u. Coral: Reptile/Verdigris
- v. Burch: Victory/Cornsilk
- w. Coral: Jukebox/Santa Fe
- x. CF stinson: Lara/Mink

Greenhouse

- y. Coral: Influential/Concord
- z. Burch: Parquet/Aloe
- 2a. CF Stinson: Watercolor Grid/Multi
- 2b. Architex: Hush/Rodeo
- 2c. Architex: Purevogue/Amber
- 2d. Burch: Memento/Stonewashed
- 2e. DesignTex: Lake Placid Crypton/Midnight
- 2f. Burch: Parlour/Kiwi



Professionally selected fabric combinations tailored just for you



“The fabric you choose can completely transform the style of your furniture. Mix and match furniture and fabrics from traditional to contemporary to create unique environments. Or pair like-styled furniture and fabrics to maintain a uniform look. The options are truly endless – that’s why I’m here to help you find the perfect selections

› **Angela K., Interior Designer**

Intuition

2g. Architex: Intersect/Sunflower
 2h. DesignTex: Lake Placid Crypton/Jewel
 2i. Coral: Winston/Pearl Grey
 2j. Coral: Voyage/Rose Gold
 2k. Architex: McQueen/Cloud Cover
 2l. DesignTex: Chunky Tweed/Off-White
 2m. Kravet: Looking Glass/Sandstone
 2n. Coral: Winston/Raisin

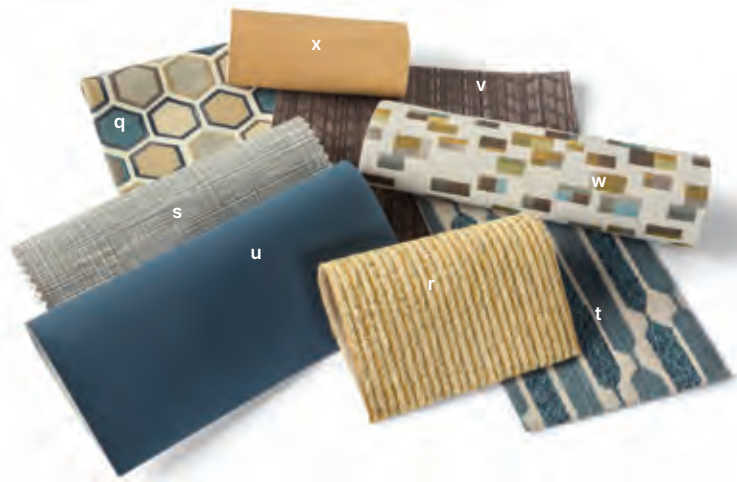
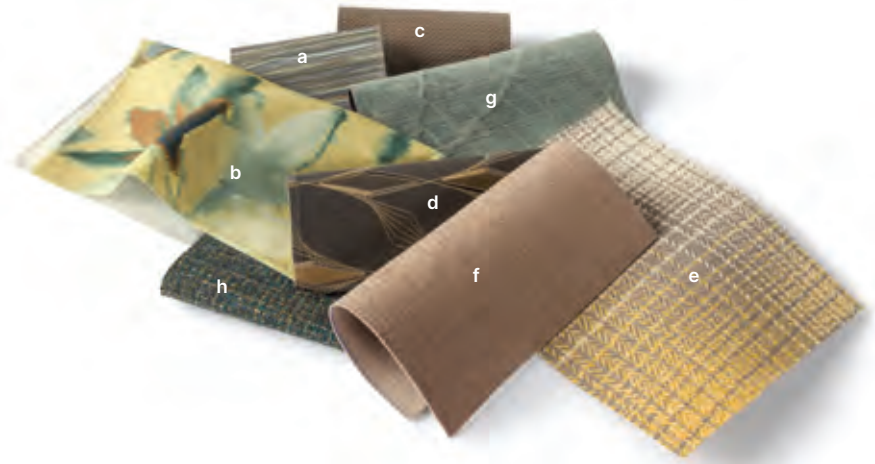
Mister Rogers

2o. CF Stinson: Fenestra Tool/Serrano
 2p. Coral: Venom/Rapids
 2q. Architex: Particle/Sand
 2r. Architex: Greenwich/Mahogany
 2s. Architex: Intersect/Night
 2t. DesignTex: Chenille Chevron/Grey
 2u. DesignTex: Chunky Tweed/Red
 2v. CF Stinson: Petal Dots/Sunflower

Proud Mary

2w. Kravet: potomac/Sandstone
 2x. Architex: Organza/Onyx
 2y. DesignTex: Lake Placid Crypton/Granite
 2z. Burch: Chateau/Cafe Au Lait
 3a. Architex: Cane/Onyx
 3b. Coral: Reptile/Fawn
 3c. Architex: McQueen/Gravel
 3d. Coral: Venom/Pecan

Curated fabric schemes for a cohesive space



Quietude

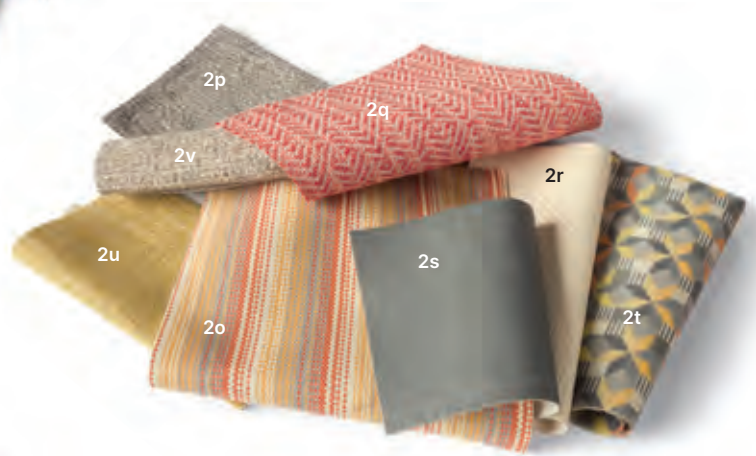
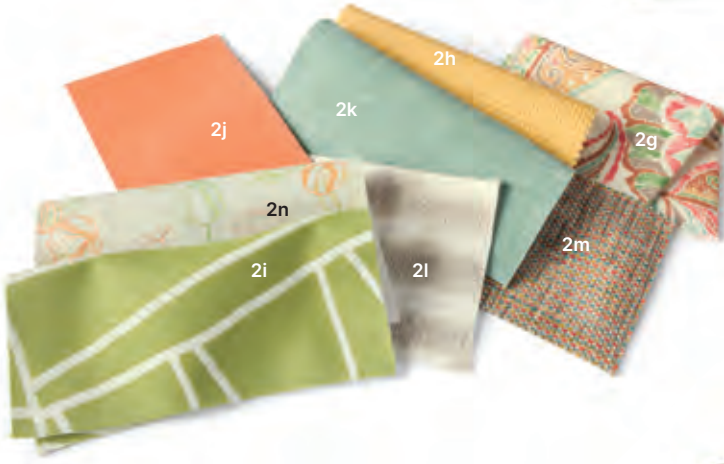
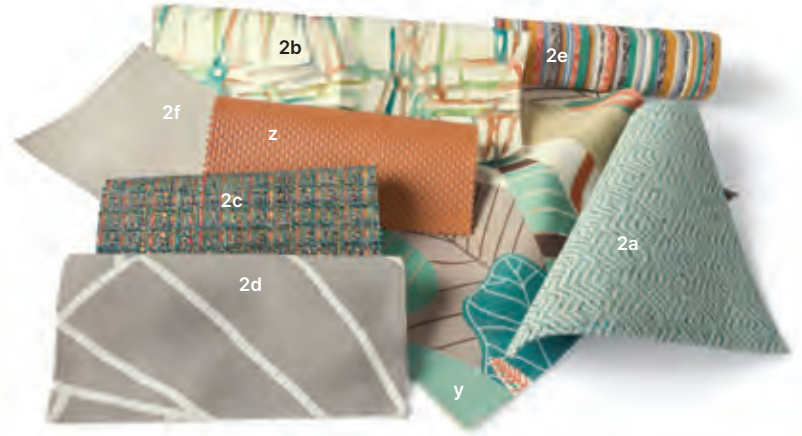
- a. CF Stinson: Ripple 2.0/Silent
- b. Coral: Avalon/Toffee
- c. Architex: Greenwich/Fog
- d. Architex: Inspire/Love
- e. Coral: Willoughby/Tuscan Sun
- f. Coral: Winston/Stone
- g. Architex: Purebotanica/Thyme
- h. DesignTex: Lake Placid Crypton/Teal

Ragstock

- i. CF Stinson: Fenestra Too!/Vindaloo
- j. Architex: Big Game/Savanes
- k. Burch: Momento/Vintage
- l. Architex: Greenwich/Mahogany
- m. Architex: Worsted/Root
- n. Coral: Jukebox/Sunset
- o. Architex: Cane/Canyon
- p. Coral: Winston/Butterscotch

Rain or Shine

- q. Coral: Jukebox/Beach Glass
- r. DesignTex: Corded/Yellow
- s. Burch: Guideline/Smoke
- t. DesignTex: Chenille Chevron/Canal
- u. Architex: Hush/Nautical
- v. Architex: Intersect/Slate
- w. Architex: Particle/Dew
- x. CF Stinson: Lara/Cashew



For expert assistance in
designing your next space, visit
DirectSupply.com/Impressions.

Redwood Forest

- y. Coral: Jubilee/Santa Fe
- z. Coral: Voyage/Marmalade
- 2a. Architex: Zenith/Polynesia
- 2b. Coral: Czar/Jewel
- 2c. Burch: Victory/Seascape
- 2d. Architex: Las Palmas/Salt
- 2e. Burch: Equinox/Baja
- 2f. DesignTex: Linnen/Fresco

Thrive

- 2g. Coral: Influential/Lively
- 2h. Coral: Voyage/Sunrise
- 2i. Architex: Las Palmas/Fennel
- 2j. CF Stinson: Lara/Marmalade
- 2k. Coral: Winston/Glacier
- 2l. DesignTex: Chenille Chevron/Sand
- 2m. DesignTex: Chunky Tweed/Multi
- 2n. CF Stinson: Pod/Aria

Volcanic

- 2o. Kravet: Baystreet/Clementine
- 2p. DesignTex: Lara/Hydro
- 2q. Architex: Zenith/Torch
- 2r. Coral: Voyage/White Chocolate
- 2s. Architex: Organza/Stone
- 2t. Kravet: Myriad/Clementine
- 2u. Kravet: Marnie/Goldenrod
- 2v. DesignTex: Lake Placid Crypton/Opal

Zipline

- 2w. Architex: Particle/Mist
- 2x. DesignTex: Linnen/Charcoal
- 2y. Architex: Intersect/Sprout
- 2z. Kravet: Salvadore/Bluebird
- 3a. Coral: Winston/New Bud
- 3b. Burch: Parquet/Lavender
- 3c. Architex: Edge/Navy
- 3d. CF Stinson: Lara/Plum



Woven Performance Fabrics

The look and feel of residential fabrics in a durable, woven design

Woven performance fabrics offer the durability and style you need to look great for the long haul in demanding environments. Many of our fabrics feature moisture-barrier, stain-resistant and fire-safe options. For easy reference, the following pages feature woven performance fabrics arranged by pattern type.

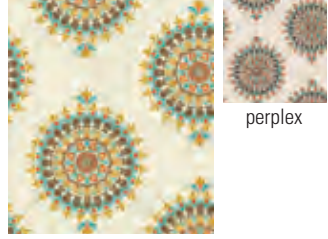
Maxwell Thomas®
Pasilla \$\$\$\$\$



crimson

celestial

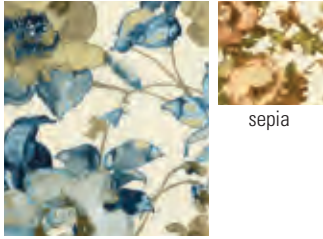
Maxwell Thomas®
Bostwick \$\$\$\$\$



octavia

perplex

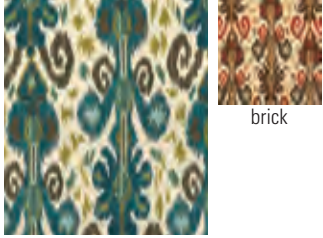
Maxwell Thomas®
Dahleigh \$\$\$\$\$



perennial

sepia

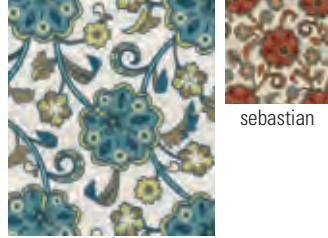
Maxwell Thomas®
Boudreaux \$\$\$\$\$



boho

brick

Maxwell Thomas®
Lavinia \$\$\$\$\$



cerulean

sebastian

Mossi \$\$\$\$\$



coastal

lagoon

spring

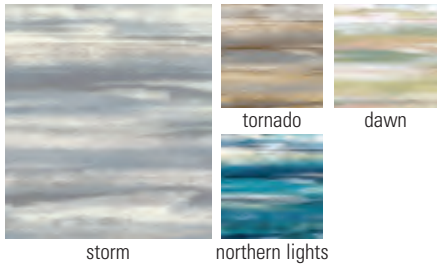
Piatto

\$\$\$\$



Coral Peaceful

\$\$\$\$



Liliana

\$\$\$\$



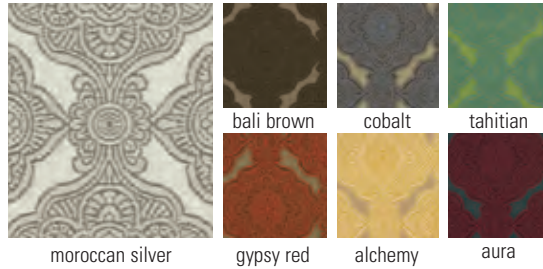
Laila

\$\$\$\$



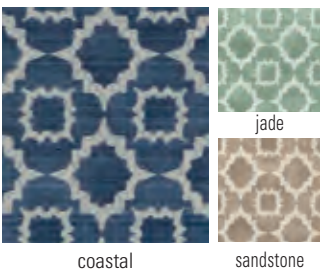
Mandalay

\$\$\$\$



Potomac

\$\$\$\$



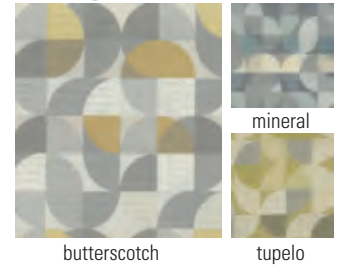
Enroute

\$\$\$\$



Mix Up

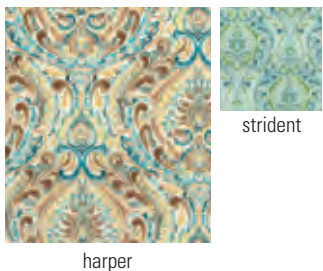
\$\$\$\$



Maxwell Thomas®

Boca

\$\$\$\$



Maxwell Thomas®

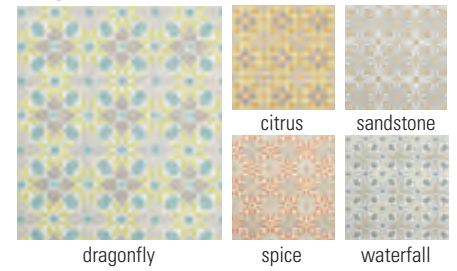
Priux

\$\$\$\$



Tiepolo

\$\$\$\$



Patterns are reduced to show the best view of each fabric. We have done our best to represent color accurately, but printing processes and lot selections vary. Please contact us for specific fabric samples for optimum pattern and color matching.

Maxwell Thomas®
Storybrooke \$\$\$\$



blossom

Maxwell Thomas®
Wandering Grace \$\$\$\$



bellamy



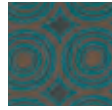
collins

Opus

\$\$\$\$



adobe



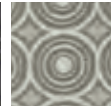
aquamarine



chiffon



atlantic



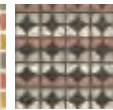
frost

Decoy

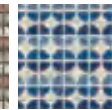
\$\$\$\$



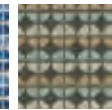
citron



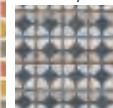
clay



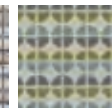
coastal



mineral



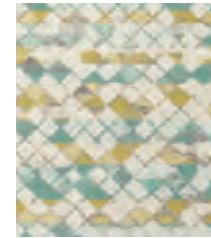
riverstone



seaglass

Light Point

\$\$\$\$



playa



pebble

Cayuga

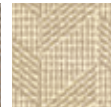
\$\$\$\$



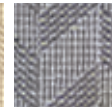
boxwood



sandalwood



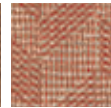
flax



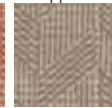
sapphire



hickory



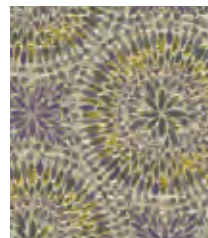
persimmon



fawn

Maxwell Thomas® Truvvy

\$\$\$\$



orchard



sapphire

Dancing Leaves

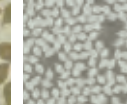
\$\$\$\$



gold



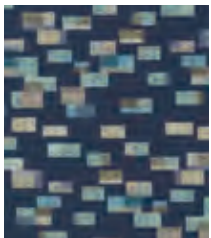
silver



moonlight

Particle

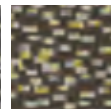
\$\$\$\$



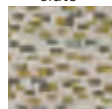
ink



slate



coffee



dew

Jaida

\$\$\$\$



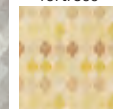
heron



fortress



quartz



saffron



serenade

Baystreet

\$\$\$\$



clementine



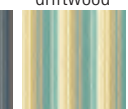
coastal



driftwood



lake



paradise

Atria

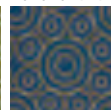
\$\$\$\$



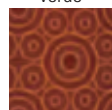
graphite



verde



aquitaine



redstone



paper white

Kin

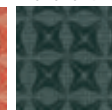
\$\$\$\$



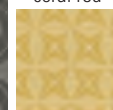
mason



coral red



mallard



avocado



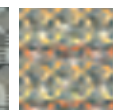
patina

Myriad

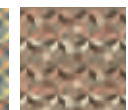
\$\$\$\$



anchor



clementine



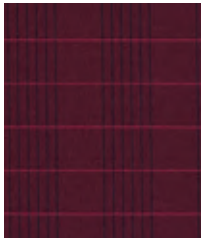
desert bloom



lagoon

Window Pane

\$\$\$\$\$



port



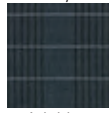
sand



sky



parakeet



ink blue

Kisco

\$\$\$\$\$



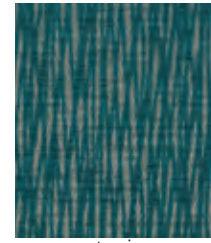
citron



fountain

Beeline

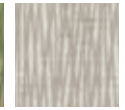
\$\$\$\$\$



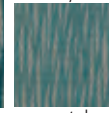
tropic



ivy



arctic



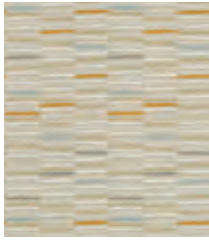
crystal



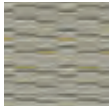
federal

Lined Up

\$\$\$\$\$



skylight



bedrock



beeswax



melon

Walkway

\$\$\$\$\$



coral



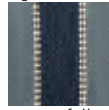
fountain



goldenrod



oasis



waterfall

Influential

\$\$\$\$\$



lively



concord



driftwood

Brandenburg

\$\$\$\$\$



ink



meyer lemon



sea spray



putty



seedling

Intersect

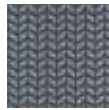
\$\$\$\$\$



sunflower



sprout



night



slate

Joy

\$\$\$\$\$



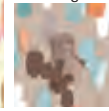
sunset



beach glass



bedrock



santa fe

Maxwell Thomas®

Gillingham

\$\$\$\$\$



antique



beguiled

Niles

\$\$\$\$\$



gazpacho



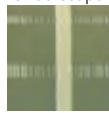
scuba



streetscape



horizon



spruce

Steamboat

\$\$\$\$\$



cognac



coastal



cranberry



woodland



serenade

Kasan

\$\$\$\$\$



bracken



java



wasabi



vintage



sunset



pewter

Prep School

\$\$\$\$\$



clover



azure



aquamarine



chambray



ecru



sculpture



boardwalk



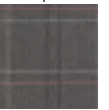
brick



dijon



flax



truffle

Patterns are reduced to show the best view of each fabric. We have done our best to represent color accurately, but printing processes and lot selections vary. Please contact us for specific fabric samples for optimum pattern and color matching.



“Our wide array of fabrics open up a world of possibilities for your design. Schedule a free consultation to learn how we can help you find the right pattern and colorway to fit both your budget and aesthetic.”

> **Rebecca K.**, Senior Lead Interior Designer

Ardsley

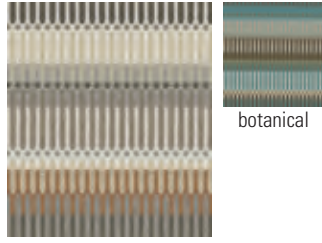
\$\$\$\$



boardwalk lagoon noble

Morse Code

\$\$\$\$



vanilla bean botanical

Memento

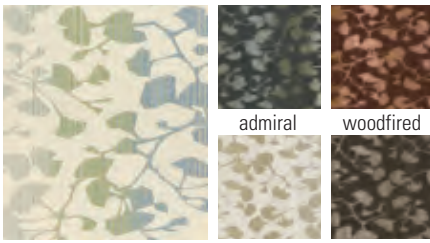
\$\$\$\$



americana heirloom earl grey stonewashed vintage

Midsummer

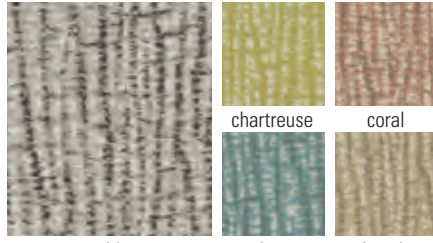
\$\$\$\$



harbor admiral woodfired birch bark

Ikot

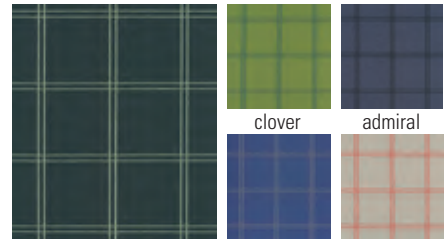
\$\$\$\$



marble mirage beach chartreuse coral

Measure

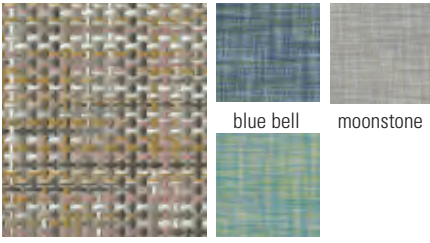
\$\$\$\$



casco bay blueberry hill poppy clover admiral

Pursue

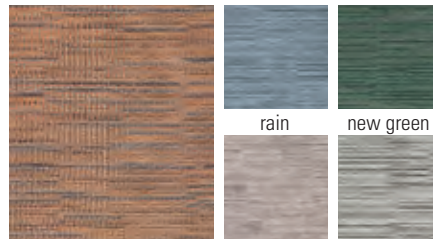
\$\$\$\$



storm blue bell moonstone caribbean skies

Layer

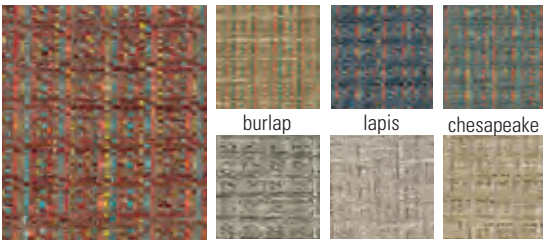
\$\$\$\$



peach rain new green lilac snowy

Victory

\$\$\$\$



marvelous driftwood cafe au lait cornsilk burlap lapis chesapeake



SHOWN: Maxwell Thomas® Sedona #FFW73 shown in opus aquamarine (back) and baron ore (seat) with violine finish

Maxwell Thomas®
Keup Trails \$\$\$\$



stormy

Rio

\$\$\$\$\$



meadow

hudson

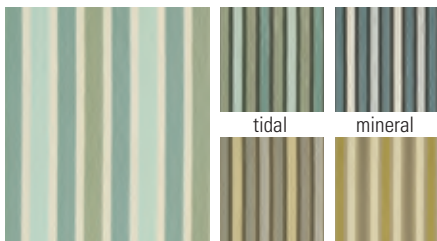
carnival

bedrock

› Schedule a **FREE** design consultation or request fabric samples. Get started at DirectSupply.com/Impressions.

Guru

\$\$\$\$\$



skylight

vanilla bean

lotus

tidal

mineral

Roadline

\$\$\$\$\$



mulberry

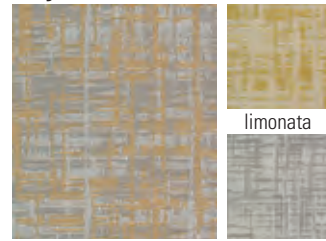
brown sugar

coastal

berry

Dejo

\$\$\$\$\$



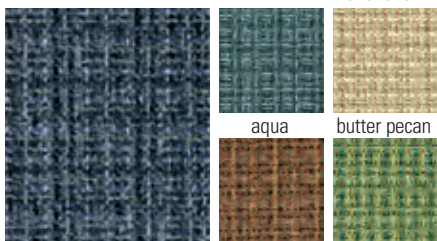
butterscotch

limonata

quartz

Valet

\$\$\$\$\$



admiral

argyle

palmetto

aqua

butter pecan

Labyrinth

\$\$\$\$\$



calypso

aspen

cornflower

olive

rosewater

shearling

caviar

cerise

federal

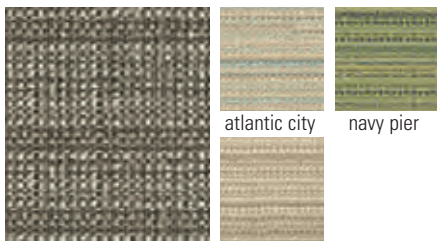
frost

sienna

stratus

Boardwalk

\$\$\$\$\$



coney island

myrtle beach

atlantic city

navy pier

Ascot

\$\$\$\$\$



silverado

natural

cascade

Zenith

\$\$\$\$\$



reed

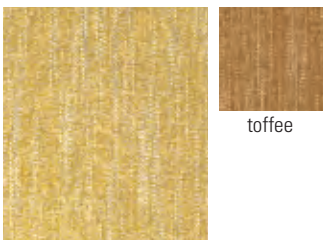
azure

spa

vesper

Marnie

\$\$\$\$\$

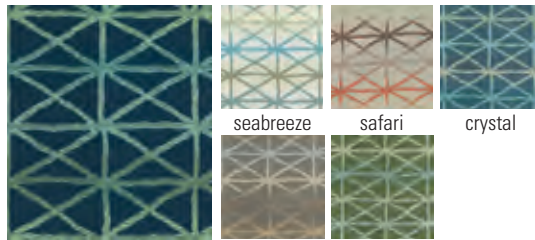


goldenrod

toffee

Batik

\$\$\$\$\$



grotto

greystone

sprout

seabreeze

safari

crystal

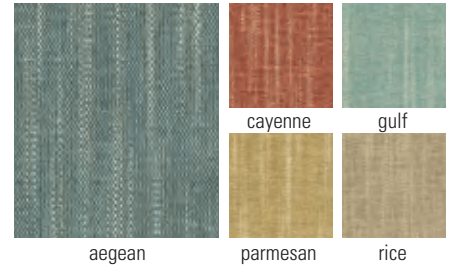
Patterns are reduced to show the best view of each fabric. We have done our best to represent color accurately, but printing processes and lot selections vary. Please contact us for specific fabric samples for optimum pattern and color matching.

Tweed Multi



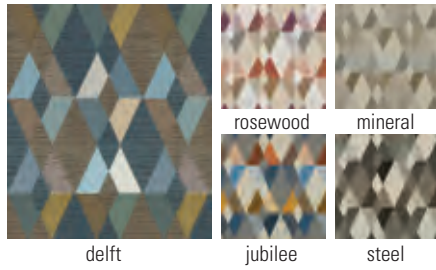
\$\$\$\$

Course



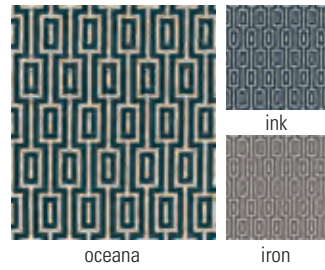
\$\$\$\$

Avenue



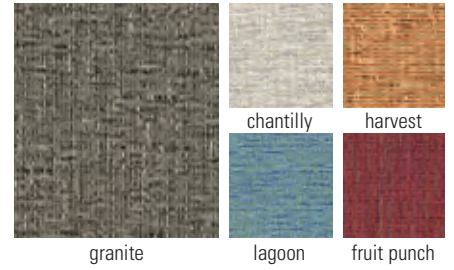
\$\$\$\$

Street Key



\$\$\$\$

Wayfarer



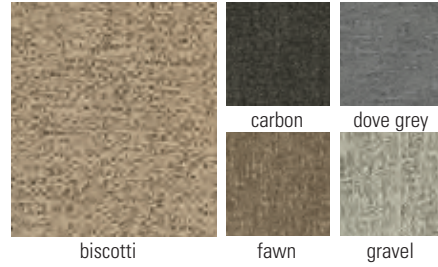
\$\$\$\$

Tartan



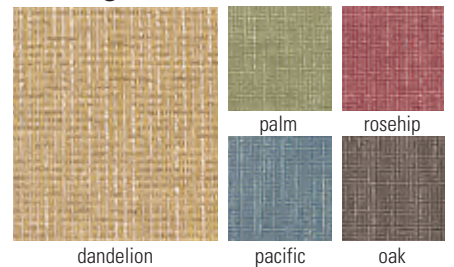
\$\$\$\$

Tagline



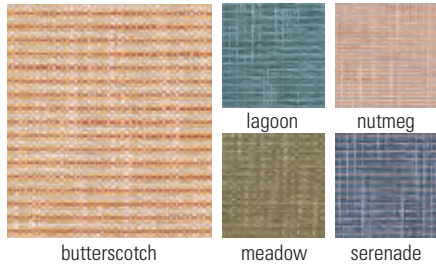
\$\$\$\$

Hashtag



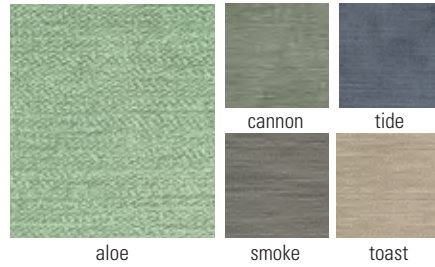
\$\$\$\$

River Park



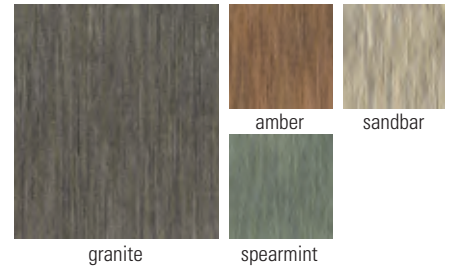
\$\$\$\$

Cove



\$\$\$\$

Delfino



\$\$\$\$

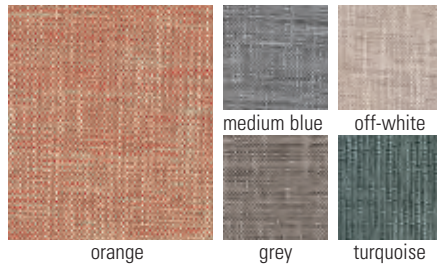
Patterns are reduced to show the best view of each fabric. We have done our best to represent color accurately, but printing processes and lot selections vary. Please contact us for specific fabric samples for optimum pattern and color matching.

Halo



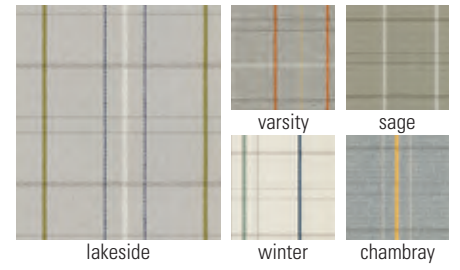
\$\$\$\$

Chunky Tweed



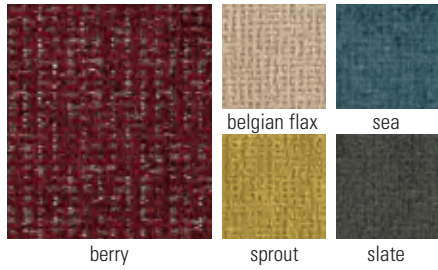
\$\$\$\$

Homage



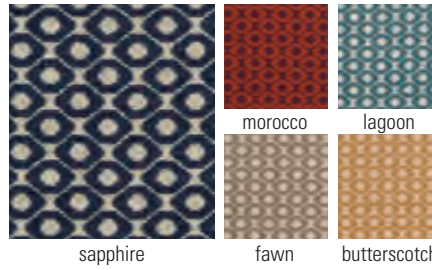
\$\$\$\$

Big Texture



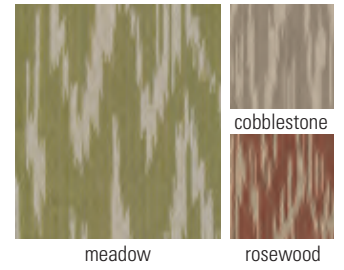
\$\$\$\$

Pave the Way



\$\$\$\$

Ikat Field



\$\$\$\$

Lake Placid



\$\$\$\$

Kith



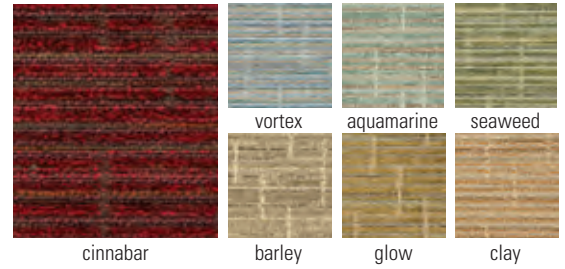
\$\$\$\$

Velour



\$\$\$\$

Haiku



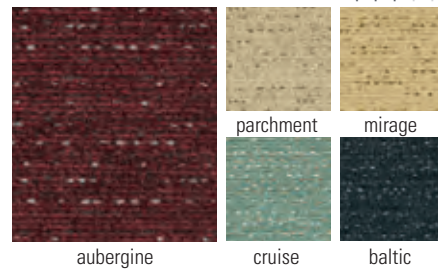
\$\$\$\$

Linnen



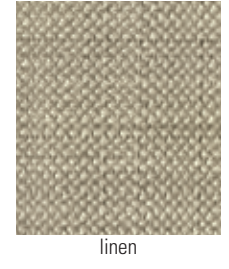
\$\$\$\$

Tabloid



\$\$\$\$

Ultra Shade



\$\$\$\$

Pivot

\$\$\$\$\$



Homestead

\$\$\$\$\$



Gallant

\$\$\$\$\$



Milano

\$\$\$\$\$



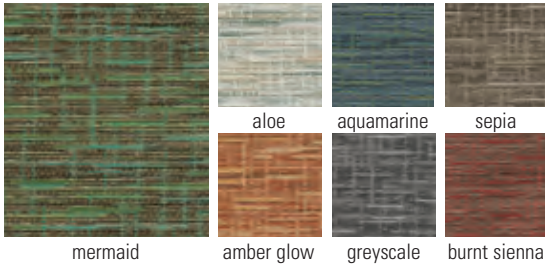
Syllabus

\$\$\$\$\$



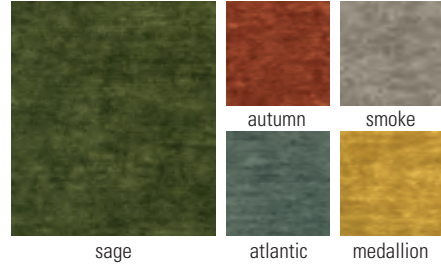
Raffia

\$\$\$\$\$



Glamour

\$\$\$\$\$



Via

\$\$\$\$\$



Playa

\$\$\$\$\$



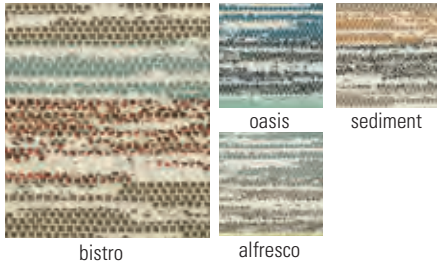
Split

\$\$\$\$\$



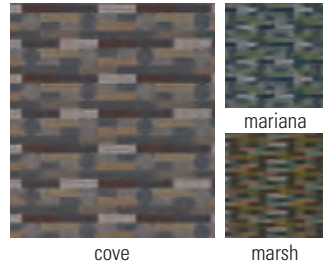
Latitude

\$\$\$\$\$



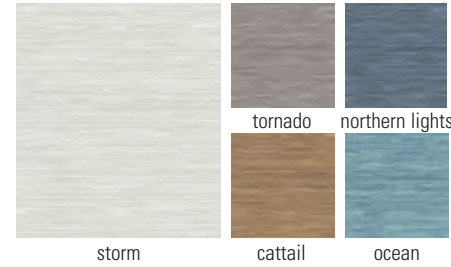
Fenestra Too!

\$\$\$\$\$



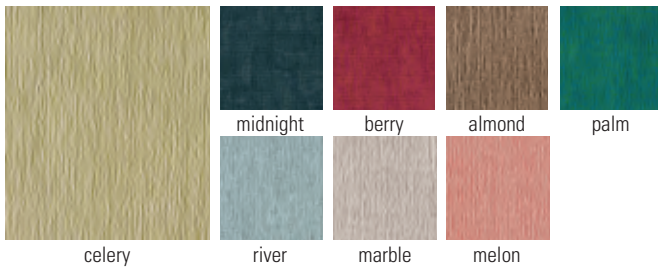
Barista

\$\$\$\$\$



Schism

\$\$\$\$\$



Atoll

\$\$\$\$\$



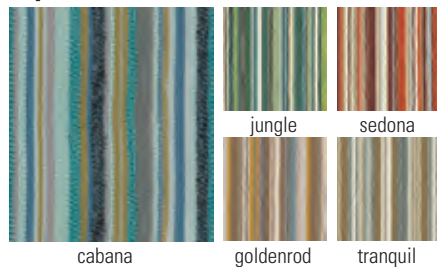
Parlour

\$\$\$\$\$



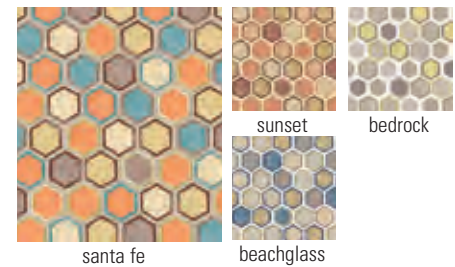
Equinox

\$\$\$\$\$



Jukebox

\$\$\$\$\$



Winston

\$\$\$\$\$

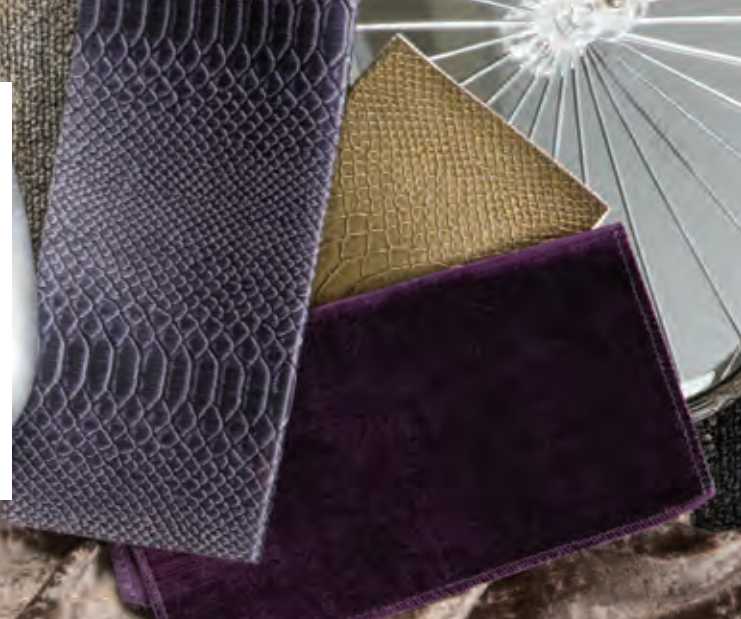


Patterns are reduced to show the best view of each fabric. We have done our best to represent color accurately, but printing processes and lot selections vary. Please contact us for specific fabric samples for optimum pattern and color matching.

Vinyl Fabrics

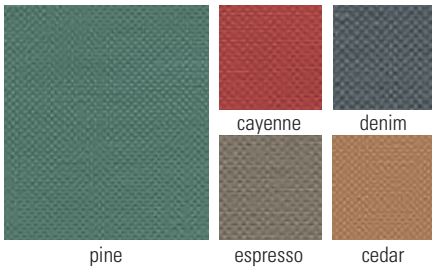
Easy-to-clean vinyl looks great for the long haul

Vinyl offers supreme cleanability and durability for your demanding environment – great for dining areas or any place where moisture or spills are particular concerns. Consider using vinyl for chair seats paired with a Woven Performance Fabric on the backs for a high-style look that is functional, too. For easy reference, the following pages feature vinyl arranged by pattern type.



Parquet

\$\$\$\$\$



pine

espresso

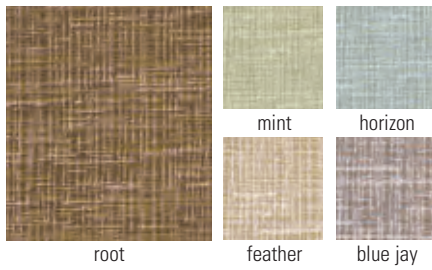
cedar

cayenne

denim

Worsted

\$\$\$\$\$



root

feather

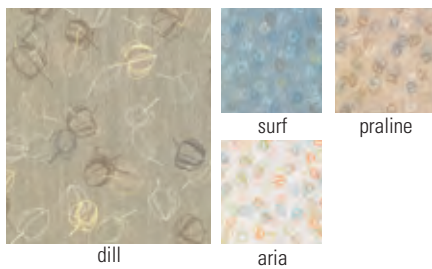
blue jay

mint

horizon

Pod

\$\$\$\$\$



dill

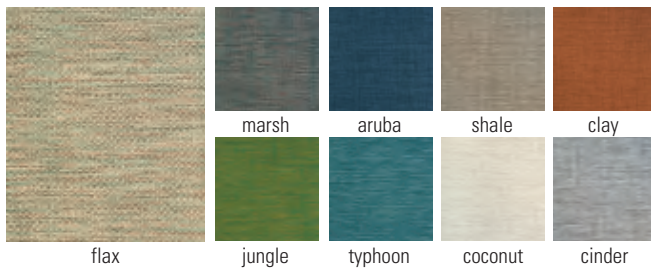
aria

surf

praline

Mimic

\$\$\$\$\$



flax

jungle

typhoon

coconut

cinder

marsh

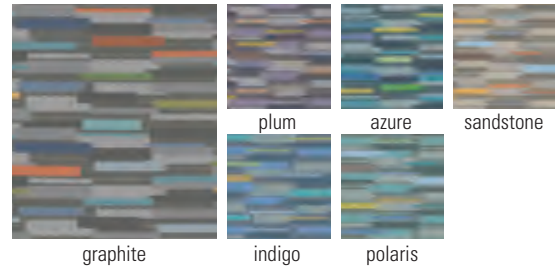
aruba

shale

clay

Pave

\$\$\$\$\$



graphite

indigo

polaris

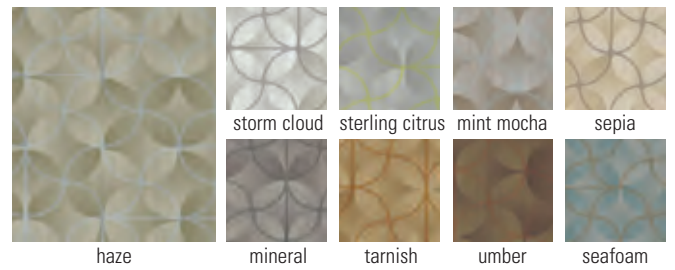
plum

azure

sandstone

Bounce

\$\$\$\$\$



haze

mineral

tarnish

umber

seafoam

storm cloud

sterling citrus

mint mocha

sepia

Current

\$\$\$\$\$



peach pit

navy

aqua

straw

mocha

avocado

cornflower

cinnamon

bittersweet

Static

\$\$\$\$\$



alpaca

everglade

heather

bark

aegean

woodland

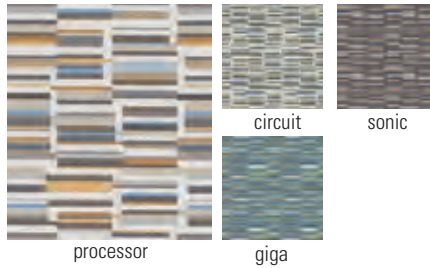
Ripple 2.0

\$\$\$\$\$



Bandwith

\$\$\$\$\$



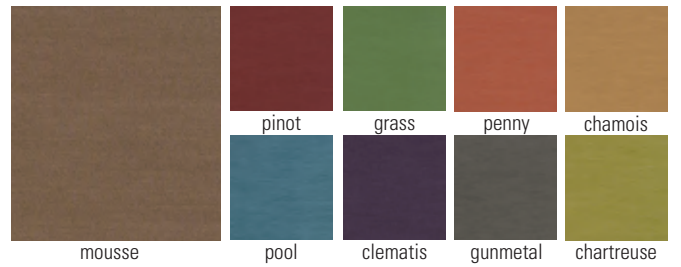
Organza

\$\$\$\$\$



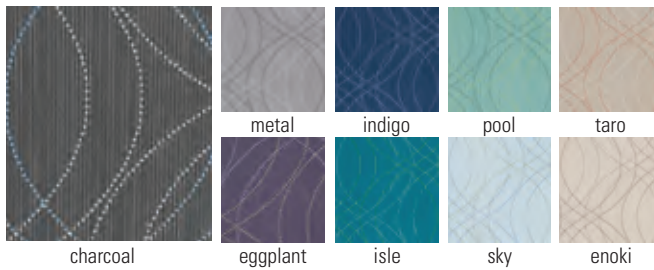
Rise

\$\$\$\$\$



Keen

\$\$\$\$\$



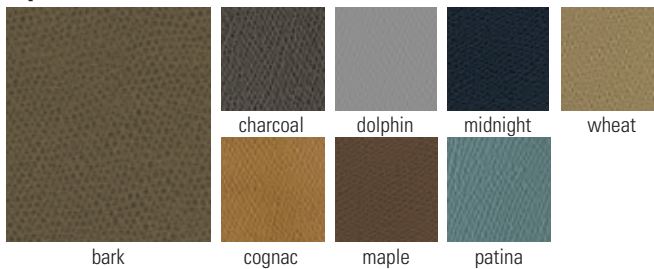
Alcazar

\$\$\$\$\$



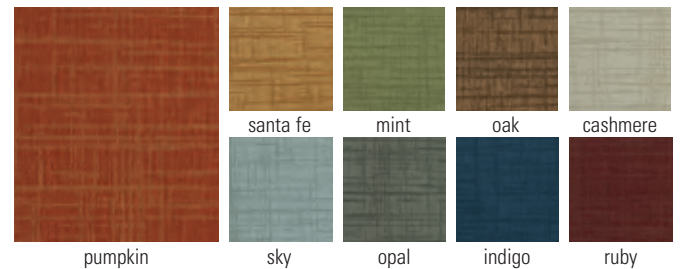
Ophidian

\$\$\$\$\$



Crosshatch

\$\$\$\$\$



Spandau

\$\$\$\$\$



Venom

\$\$\$\$\$

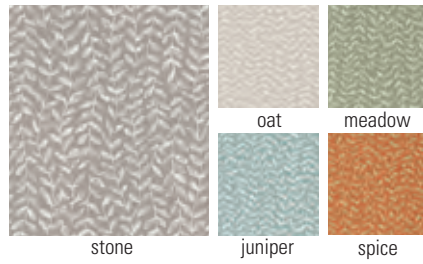


Patterns are reduced to show the best view of each fabric. We have done our best to represent color accurately, but printing processes and lot selections vary. Please contact us for specific fabric samples for optimum pattern and color matching.

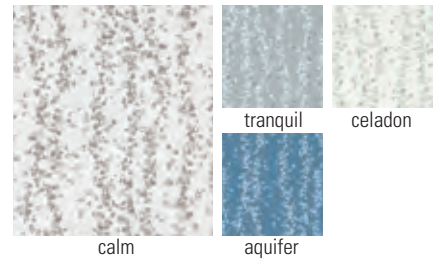
Lara \$\$\$\$



Arbor \$\$\$\$



Pebble Trail \$\$\$\$



Liberty \$\$\$\$



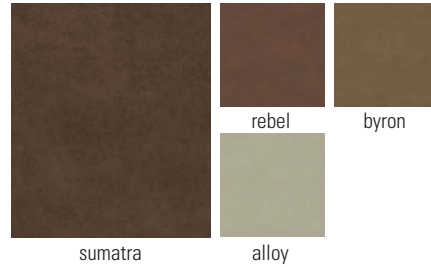
Evans \$\$\$\$



Vero \$\$\$\$



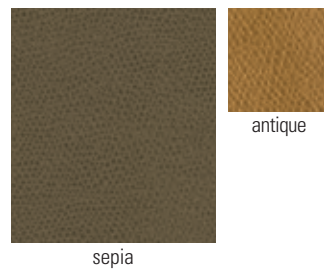
James Dean \$\$\$\$



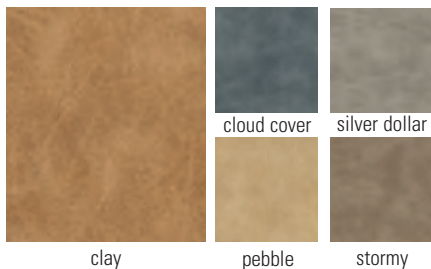
Vintage \$\$\$\$



Maxwell Thomas® Milwaukee \$\$\$\$



McQueen \$\$\$\$



SHOWN: Maxwell Thomas® Cedarburg Power Recliner #8VH38 shown in milwaukee sepia.

Caslin

\$\$\$\$



Origin

\$\$\$\$



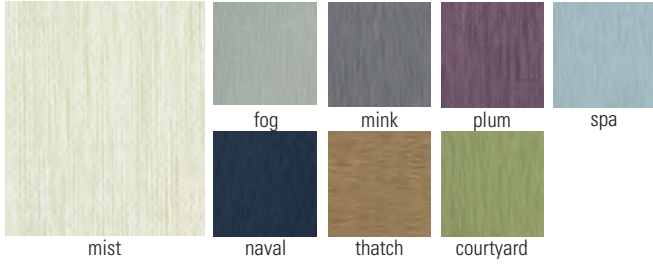
Assured

\$\$\$\$



Sydney

\$\$\$\$



Mercury

\$\$\$\$



Spur

\$\$\$\$



San Remo

\$\$\$\$



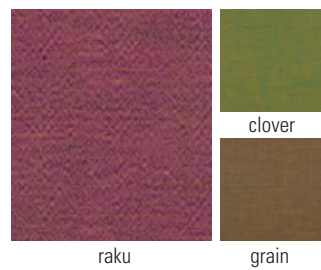
Clutch

\$\$\$\$



Trove

\$\$\$\$



Hyde

\$\$\$\$



Outback

\$\$\$\$



Burch

Refresh your community with durable, innovative fabrics

With an extensive selection of fabrics featuring sophisticated designs and details, there's always a fabric option to fit your community's needs. Burch fabrics from Direct Supply feature alluring designs and on-trend options backed by our outrageous customer service and Senior Living expertise. Our experts can help you efficiently navigate our extensive fabric selection to create a sought-after look.



Fabrics shown from top to bottom: cinema apricot, holmes paradise, mezzanine breeze, memento stonewashed, viceroy oat, holmes jungle, madras woodland, astoria forest, memento cardigan

Schedule a FREE design consultation or fabric samples today.

Get started at DirectSupply.com/Impressions



Visit DirectSupply.com/Impressions or call 1-800-893-7222 to schedule a FREE consultation!



Maxwell Thomas® Atwood Lounge Chair #289HD in quick ship caslin reef with walnut finish and vintage nailhead



Holsag England Stacking Armchair #D3R90 in quick ship rush hour fiesta (back) milwaukee antique (seat) corduroy finish.



Maxwell Thomas® Kensington Dining Chair #CXR51 in quick ship mandalay moroccan silver (back) and milwaukee sepia (seat) with corduroy finish.



Crypton Fabrics

- a. beeline crystal
- b. bridgework zest
- c. bridgework nomad
- d. morse code botanical
- e. morse code vanilla bean
- f. kisco fountain
- g. rush hour fiesta
- h. steamboat woodland
- i. steamboat cognac
- j. kasan bracken
- k. walkway goldenrod
- l. tartan almond
- m. rush hour veil
- n. dejo river rock
- o. piatto sea green
- p. tiepolo spice
- q. cayuga flax
- r. victory pecan
- s. accolade opal
- t. nominate sandstone
- u. valet butter pecan
- v. mandalay moroccan silver
- w. cayuga sandalwood
- x. liliana honey
- y. labyrinth calypso
- z. raffia seaglass
- 2a. gamma cashew
- 2b. prep school flax

Vinyl Fabrics

- 2c. outback root
- 2d. milwaukee antique
- 2e. milwaukee sepia
- 2f. mimic pearl
- 2g. san remo cognac
- 2h. san remo pinecone
- 2i. matrix denim
- 2j. caslin reef
- 2k. clutch tortise
- 2l. ladysmith steel
- 2m. rambler prairie

Finishes for Kellex

- 2n. honey
- 2o. mocha cafelle

Finishes for Maxwell Thomas®

- 2p. walnut
- 2q. mocha

Finishes for Akin

- 2r. deep forest
- 2s. spiced cherry

Finishes for Maxwell Thomas Dining

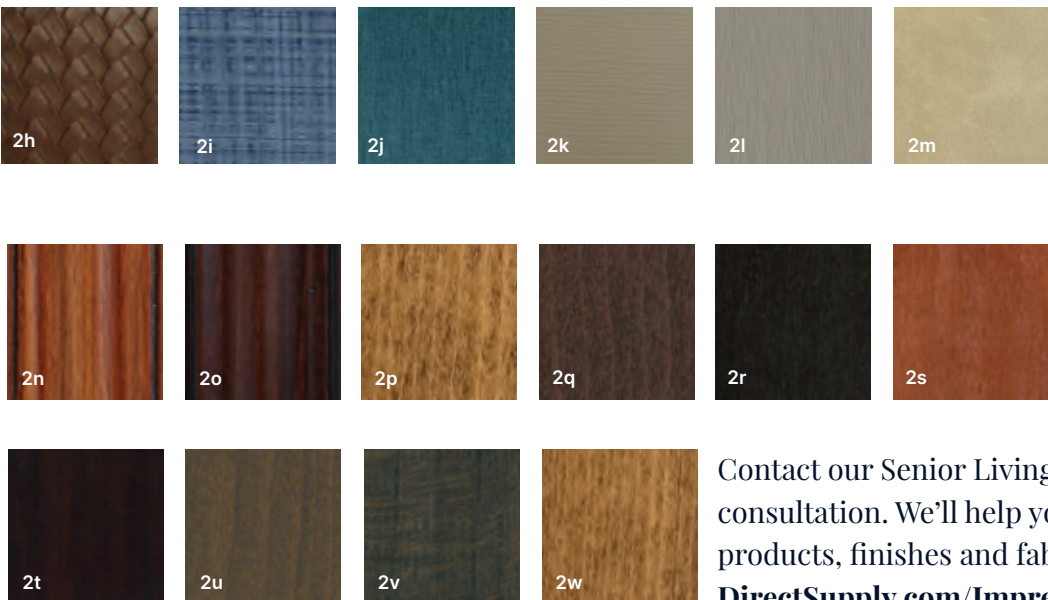
- 2t. ravenwood (faux wood metal chairs only)
- 2u. tawnywood (faux wood metal chairs only)

Finishes for Holsag & Maxwell Thomas Dining

- 2v. corduroy (wood chairs only)
- 2w. walnut (wood chairs only)

Quick-Ship Fabrics & Finishes

Choose Quick-Ship fabric and finish options available for popular common area collections, accent seating and dining chairs.



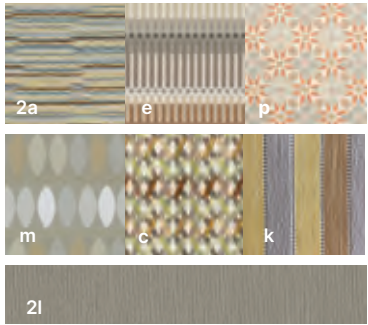
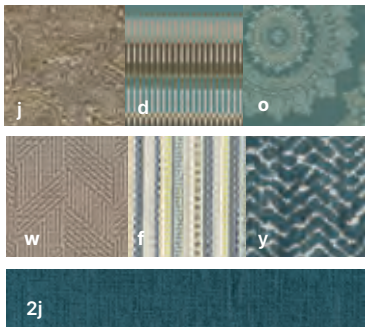
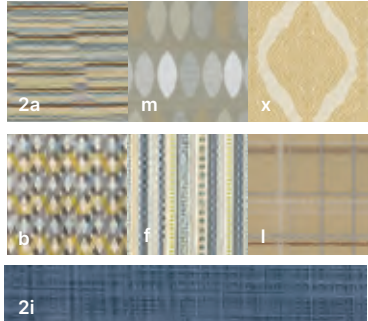
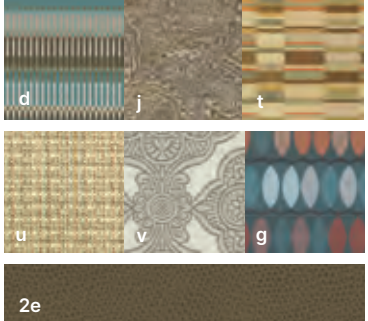
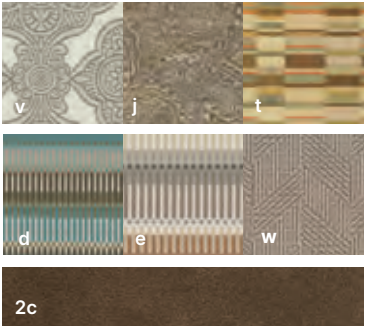
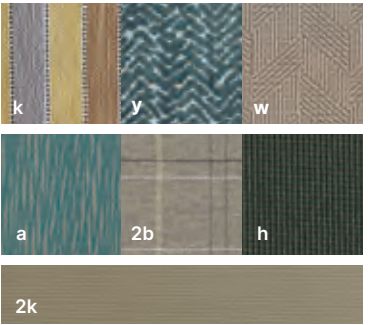
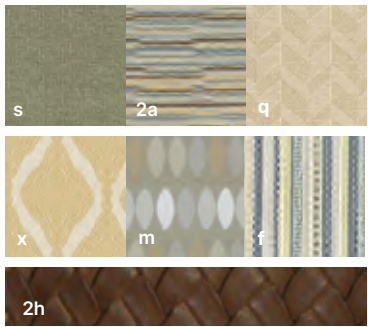
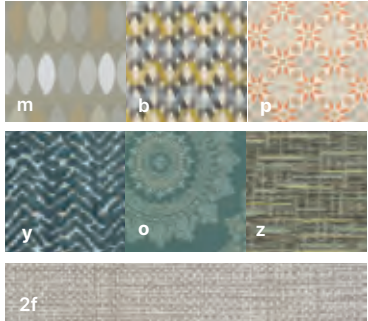
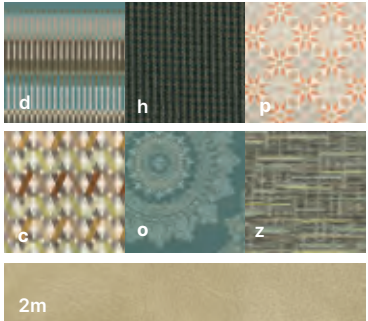
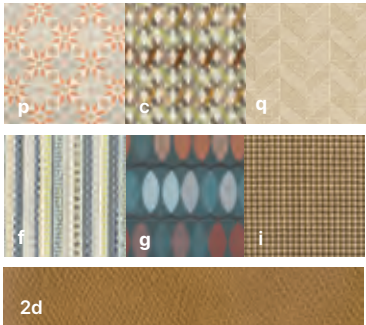
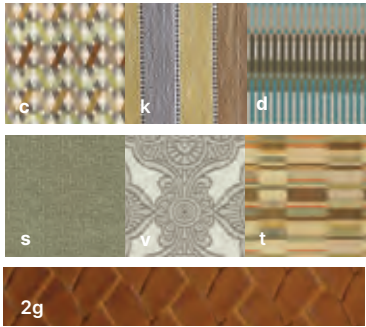
Contact our Senior Living designers for a free consultation. We'll help you select Quick-Ship products, finishes and fabrics for your space.
DirectSupply.com/Impressions



Curated Combinations

Need help coordinating fabrics? Select from a wide variety of fabric combinations, curated by Direct Supply's professional interior designers. Each Crypton fabric is paired with a coordinating vinyl seat cushion. With these fabric combinations, the options are endless for an easy and stylish room refresh.

Explore more at directsupply.com/quickship.



Finishing touches

Explore our vast selection to find the right finishes for your community. Find close matches between various manufacturers below or request custom finishes. We can match nearly any finish – just ask!

Please note that due to different manufacturing processes, the finishes shown below may not be exact but are close representations. **Call 1-800-634-7328 to request free finish samples and see your options firsthand.**

Maxwell Thomas® Upholstered Furniture



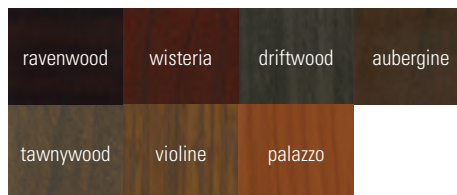
Maxwell Thomas® Wood Dining Chairs



Maxwell Thomas® Laminate Tabletops Tier 1



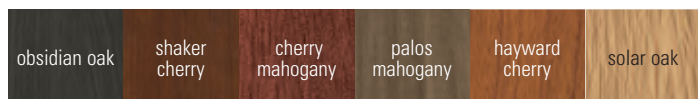
Maxwell Thomas® Metal Dining Chairs



Maxwell Thomas® Laminate Tabletops Tier 2



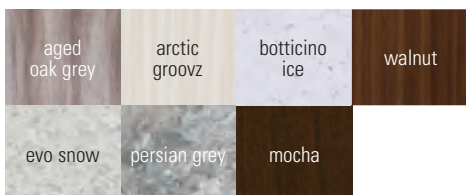
Maxwell Thomas® Thermolaminate Tabletops Tier 1



Maxwell Thomas® Maple Tabletops and Bases



Maxwell Thomas® Thermolaminate Tabletops Tier 2



Maxwell Thomas 4-Leg Dining Tables with thermolaminate tops are not available in mocha finish.

Maxwell Thomas® Occasional Tables†



Maxwell Thomas® Casegoods†



† Finish options vary based on collection. Find specific finish options by collection on pages D66 - D67.

† Finish options vary based on collection. Find specific finish options by collection on pages D88 - E113.

Akin

deep forest	cordovan	warm walnut	riverwood	harvest brown
planked elm	spiced cherry	millwork cherry	asian walnut	

H Contract

java	plantation	espresso	patina
corsica dark	palisade dark	classic	farmtable
weathered	truffle	new classiques	

Akin Laminate Dining Tabletops

deep forest	figured mahogany	magnata	cordovan	warm walnut	planked elm
montana walnut	warehouse oak	madison walnut	spiced cherry	henna vesta	canyon passage
riverwood	asian walnut	harvest brown	neowalnut	river cherry	millwork cherry
antique brush	uptown walnut	nantucket oak	veranda teak	natural tigris	bainbrook gray
kalahari topaz	quartered oak	new age oak	rotary ply	beigewood	silver travertine

Hekman

black satin	chocolate	toffee	tobacco	classic cherry
halstead	caramel glaze	canterbury	medium oak	birmingham

Fairfield

café mocha	manhattan	espresso	candlelight	sable
cherry	walnut	mahogany	tobacco	hazelnut
mica	rustic portobello	pecan	flint	almond buff

Holsag

black	barrel	chocolate	mahogany	boardwalk
mocha	corduroy	truffle	heritage walnut	cayenne
charcoal	walnut neo	macchiato	pebble gray	walnut
vintage gray	greige	champagne	chestnut	oak
coffee	teak	natural	cream	

Kellex

dark chocolate	empire	coffee	mahogany	figured mahogany
montana walnut	nutwood	english chestnut	cherrywood	walnut
spice	oak	honey	fonthill pear	light oak
solar oak	kensington maple	new age oak	cream	

Leisters

chocolate pear	cocoa cherry	cherry blossom	milk chocolate
cognac	hayward cherry	candlelight	hardrock maple

Schedule a FREE design consultation

Whether you're replacing one piece of furniture or refreshing an entire room, our design consultants can help you coordinate your new and existing furnishings for a look that makes an impression.



Visit [DirectSupply.com/Impressions](https://www.DirectSupply.com/Impressions) or call 1-800-893-7222 to schedule a FREE consultation!